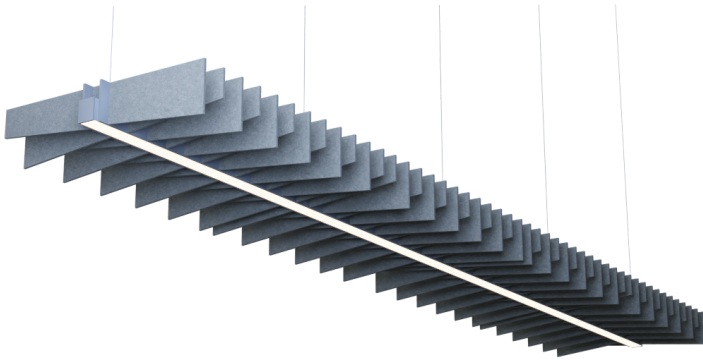


KA STFU LS2 direct

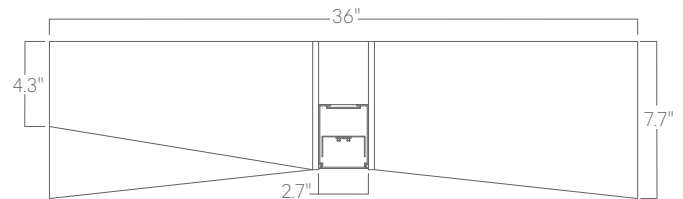


For noise reduction and architectural lighting in one, the STFU series offers a wide range of acoustic felt colors, shapes, profiles, and mounting options. Custom lengths and patterns are tailored to suit any modern space.

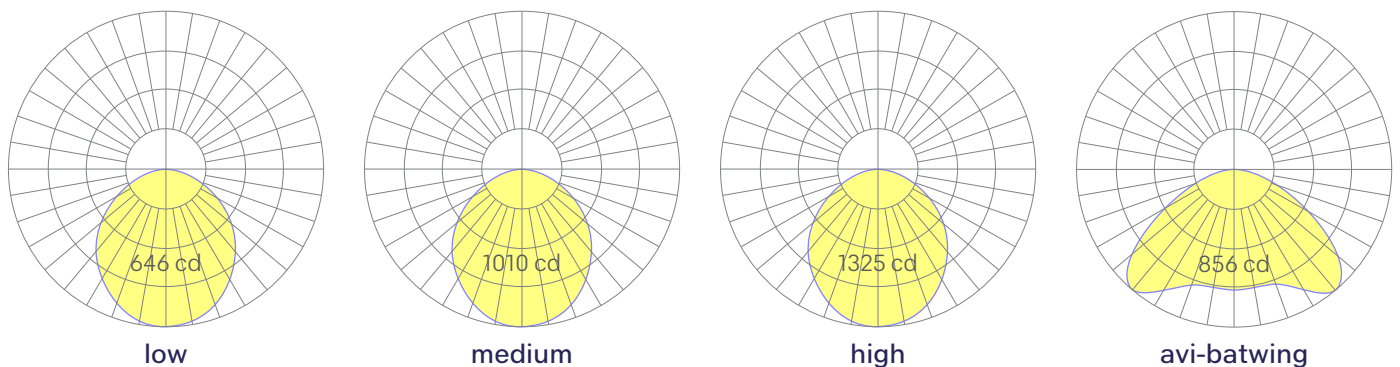
Features

- 24 specifiable colors of recycled PET acoustic felt
- Noise Reduction Coefficient of .75 with a Class-A fire rating
- Fire Spread Index of 0 & Smoke Development Index of 200
- Extruded, recycled, premium aluminum housing
- Aluminum core LED boards, specifiable optics
- Specifiable color temperature. CRI > 90, R9 > 70
- Specifiable, dimmable drivers or PoE
- 5 Year, 50,000 hour warranty, damp location rated
- WELL Building Standard compatible [learn more](#)

Dimensions



Optics



Representative distribution and peak candela. For other options see order information or IES files [here](#).

KA STFU LS2 direct

Ordering Information

For each option group below specify one option. If you don't see your preferred option listed, contact us for [help](#).

1 Fixture ID	2 Length	3 Color Temperature	4 Output																
KA.STFU.LS2	2 2 ft	27 2700K/90 CRI	LOW Low output MED Medium output HIGH High output CUST Custom output <small>Specify watts or lumens: Up to 13W/ft max. Down to 6W/driver min.</small>																
	4 4 ft	30 3000K/90 CRI																	
	8 8 ft	35 3500K/90 CRI																	
		40 4000K/90 CRI																	
		50 5000K/90 CRI																	
		TW Tunable White 2700K-6500K <small>Must use TW10 driver.</small>																	
		RGBW30 RGB +white; 3000k <small>Must use remote DMX driver.</small>																	
	RGBW35 RGB +white; 3500k <small>Must use remote DMX driver.</small>																		
	RGBW40 RGB +white; 4000k <small>Must use remote DMX driver.</small>																		
	WD Warm Dim 2200K-3000K <small>Must use WD10 driver.</small>																		
5 Voltage	6 Driver	7 Housing Finish	8 Felt Finish																
UNV Universal (120/277V) 347V 347V	DB Standard 0-10V 1% DB.1% 0-10V 0.1% ELV Reverse phase 1% (120V only) TRI Forward phase LDE1 Lutron Digital EcoSystem DALI DALI-2 driver PoE Power over ethernet TW10 2 channel 0-10V for tunable white WD10 0-10V warm dimming DMX DMX512 <small>All DMX drivers set to default address 001 and provided in remote enclosers. Contact us for other addressing needs.</small> JA8 JA8 compliant 1% dimming	W White BLK Black CC Custom color <small>See finish options here</small> SLV Silver	FW White felt FBLK Black felt FGRY Grey felt F/ Any available felt color <small>See options on page 4</small>																
9 Mounting	10 Optics	11 Sensors/Controls	12 Circuit																
AC AC cable (50 in.) ACTB9 AC cable + 9/16th Tbar clip ACTB15 AC cable + 15/16th Tbar clip ACTBSG AC cable + Slot Grid Tbar clip AC3.5 3.5 in. canopy + Jbox adaptor <small>Adaptor must be mudded-in.</small> ACCC AC cable <small>To conduit pipe canopy.</small> PS.X Pendant stem with standard 5-inch canopy. <small>12, 18, 24, 36, or 48 in. Consult factory for lengths not shown.</small> PSFC Field cuttable pendant stem <small>94 in. stem field cuttable to any length.</small> ACU AC to unistrut	AVI.ASY Asymmetric optic AVI.BWG Batwing optic RV 0.2 inch reveal lens FL Flat diffuser	NA None WISM_% Wattstopper occupancy WISD Wattstopper daylight ACM Acuity nLight- module only ACS Acuity nLight- (nES 7) ACAS Acuity nLight- AIR (rES 7) CCS Casambi module AWRN Lutron Athena wireless node AWNS Lutron Athena wireless node with sensor OTHER Consult factory ACAM Acuity nLight Air (r10)	NA None EMPCK Emergency battery pack EMCKT Emergency circuit <small>May require additional power feeds.</small> DAYCKT Daylight circuit <small>May require additional power feeds.</small>																
13 Options	<h3>Performance</h3> <table border="1"> <thead> <tr> <th>Output¹</th> <th>Watts</th> <th>Lumens</th> <th>LPW</th> </tr> </thead> <tbody> <tr> <td>Low</td> <td>3.5</td> <td>422</td> <td>121</td> </tr> <tr> <td>Medium</td> <td>5.5</td> <td>669</td> <td>121</td> </tr> <tr> <td>High</td> <td>7.5</td> <td>875</td> <td>117</td> </tr> </tbody> </table> <p><small>¹Based on a typically configured 90 CRI, 3500K luminaire using one driver. Custom outputs available. Please consult factory. For 4000K multiply by 1.05; for 3000K, 0.9; for 2700K, 0.92. For Warm Dim multiply by .80.</small></p>  <p><small>Wiring diagrams, PoE and sensor details Click or Scan</small></p>			Output ¹	Watts	Lumens	LPW	Low	3.5	422	121	Medium	5.5	669	121	High	7.5	875	117
Output ¹	Watts	Lumens	LPW																
Low	3.5	422	121																
Medium	5.5	669	121																
High	7.5	875	117																
NA None STD White canopy/cord/stem CAN.X Canopy + color <small>See finish options here</small> SJ.BLK Black cord SJ.WHT White cord																			

KA STFU LS2 direct

Drivers & Electrical

Integral drivers* with 0-10V Dimming standard. Several other driver options available; see ordering information.

*DMX drivers are provided in remote enclosures.

Sensors & Controls

Sensors are installed on an aluminum plate adjacent to the luminaire lens¹. Coronet remains agnostic in our approach to sensors and control systems; our fixtures are compatible with most systems offered.

¹Not applicable to indirect only models. Consult factory.

Emergency Back-Up

For fixtures three-feet or longer, a 6W emergency driver may be wired to 4ft sections. A 10W driver is also available (consult factory). Emergency circuits for use with building generators are also available.

Weight

3 lbs per foot

Optics

Extruded satin acrylic lenses provide excellent diffusion, high transmission, and no LED imaging.

Construction

Housings are extruded premium, recycled aluminum. Individual fixtures are available up to 12' long and may be specified as nominal or precision lengths. Precision lengths are supplied within 1/8" tolerance.

PoE (Power over Ethernet)

Compatible with virtually all PoE systems including Molex Coresync, Igor, Smartengine, Platformatics, and NuLED SPICEbox.

Consult factory for systems not listed. See [here](#) for more info.

Finishes

Luminaire housing is finished with high quality polyester powder coating. Acoustic material is made of post-consumer recycled PET felt.

KA STFU LS2 direct

Acoustic Felt Colors



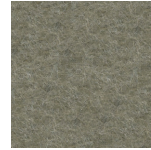
White



Marbled Grey



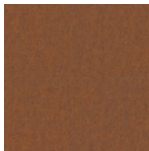
Taupe



Dark Khaki



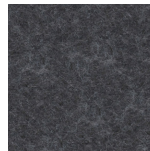
Stone



Spice



Mocha



Grey



Charcoal



Black



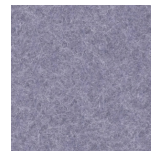
Sailor Blue



True Blue



Sky Blue



Periwinkle



Pink Panther



Purple Orchid



Violet



Maroon



Red Rose



Pumpkin



Sunshine



Lime

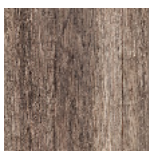


Emerald

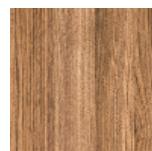


Sage

Acoustic Felt Wood Grain



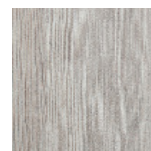
Weathered Oak



Chestnut



Oak



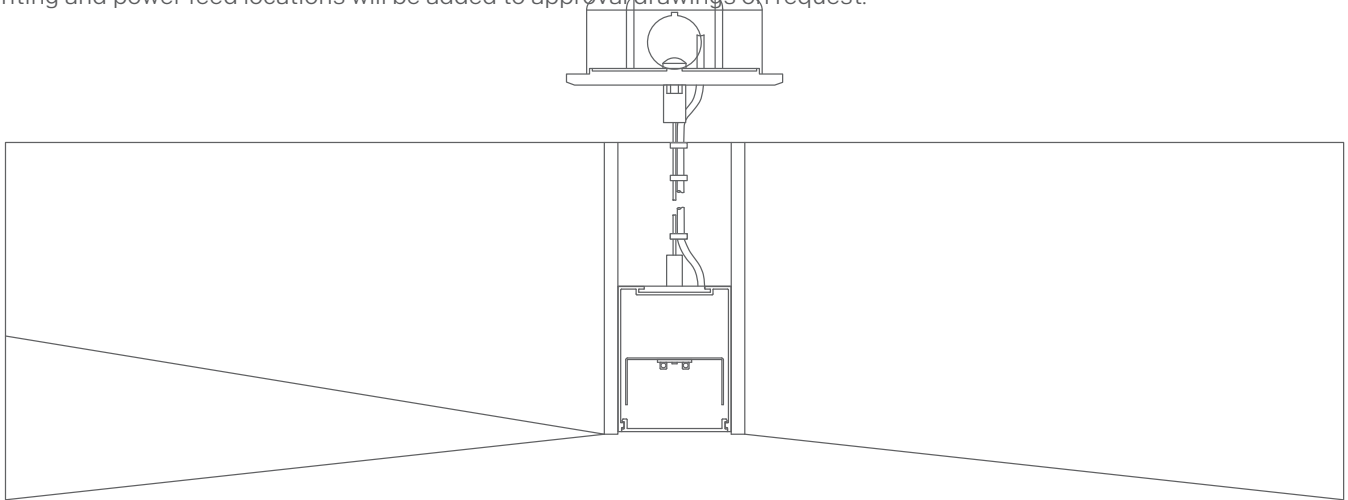
Light Teak

Please note that colors may vary depending on screen settings. For an accurate representation, please request a sample.

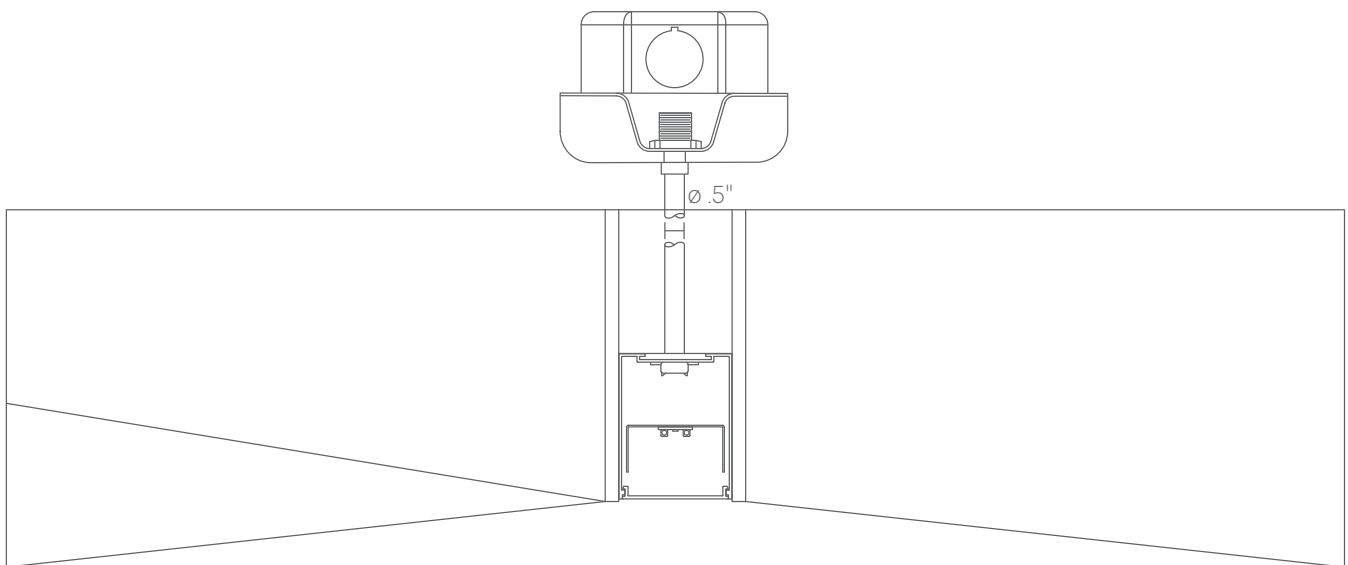
KA STFU LS2 direct

Mounting Options

Custom mounting types and ceiling transitions available; consult factory.
Mounting and power feed locations will be added to approval drawings on request.



**Aircraft cable
to canopy**



Pendant stem

Please consult factory shop drawings for suspension points.

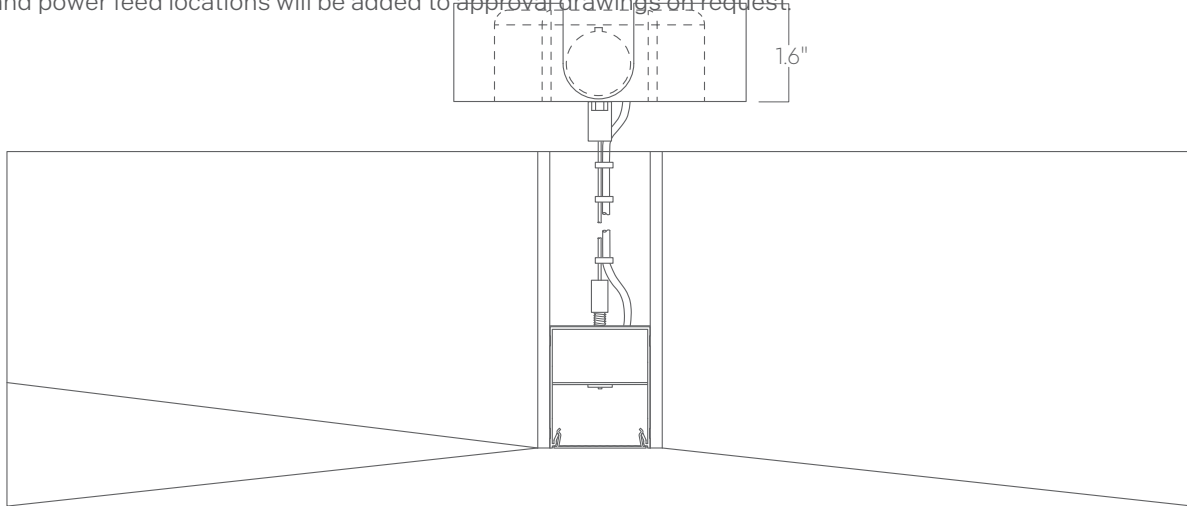
To prevent damage to fixtures, factory designated suspension points must not be field altered.

Do not attempt installation if you do not understand the installation instructions.

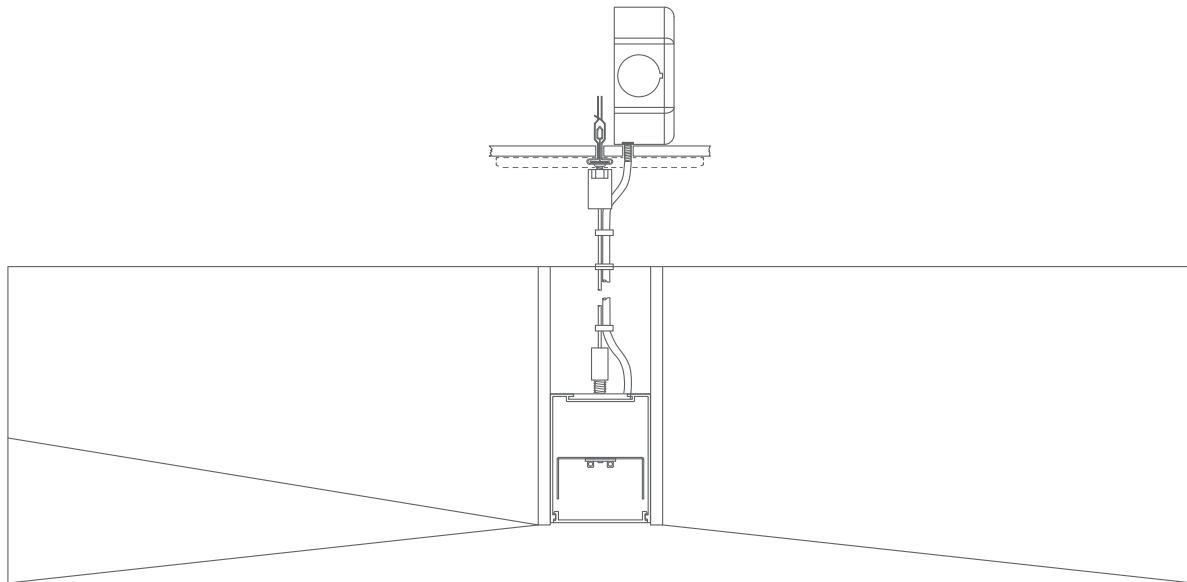
KA STFU LS2 direct

Mounting Options

Custom mounting types and ceiling transitions available; consult factory.
Mounting and power feed locations will be added to approval drawings on request.



**Aircraft cable
Conduit canopy
with knockouts**



**Aircraft cable
5" canopy, T Bar Clip**

Please consult factory shop drawings for suspension points.

To prevent damage to fixtures, factory designated suspension points must not be field altered.

Do not attempt installation if you do not understand the installation instructions.