

# Stucchi recessed track

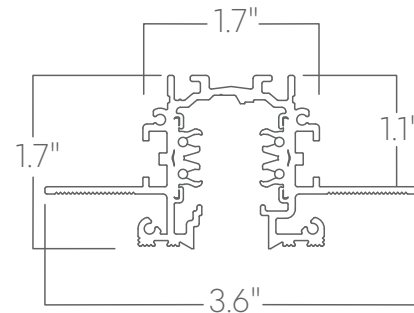


An architectural-grade, two-circuit/two-neutral track that provides a power supply for Coronet track lighting fixtures. With solid-copper conductors and a continuous mounting channel, it can be installed as straight runs or configured in patterns using the track components and available accessories.

## Features

- Available in trimmed or trimless track
- Field cuttable housing
- Extruded, recycled aluminum housing
- Milled grounding bar provides continuous ground contact
- Two independent circuits, 120v or 277v, 20 amp max each
- Black or white finish available

## Dimensions



## Trimless Track

Part number	Finish	Description
9000-UL4/_-TR1-120	B W black white	4ft trimless track
9000-UL8/_-TR1-120	B W black white	8ft trimless track

## Trimmed Track

Part number	Finish	Description
9000-UL4/_-R2-120	B W black white	4ft trimmed 120 volt track
9000-UL8/_-R2-120	B W black white	8ft trimmed 120 volt track
9000-UL4/_-R3-277	B W black white	4ft trimmed 277 volt track
9000-UL8/_-R3-277	B W black white	8ft trimmed 277 volt track



# Stucchi recessed track

## Accessories

Part number	Finish	Voltage	Description	Image
9004/TR1L-__	G B W gray black white	NA none	End cap for trimless 120V track with locking screws	
9004-R/_	B W black white	NA none	End cap for recessed track with locking screw	
S-9000/T-TR	NA none	NA none	Cutting tool for trimless track conductors	
S-9500/314-__	B W black white	NA none	Reinforcing bracket for jointing connector	
S-9000/112-BT-__	B W black white	NA none	Stem Bracket	
9001/_-2C-__	B W black white	120 277 120 volt 277 volt	L-End feed polarity right/earthing left	
9010/_-2C-__	B W black white	120 277 120 volt 277 volt	Middle feed	
9011/_-2C-__	B W black white	120 277 120 volt 277 volt	L-feed polarity internal/earthing external	
9013/_-2C-__	B W black white	120 277 120 volt 277 volt	T-feed polarity external left/earthing internal right	
9017/_-2C-__	B W black white	120 277 120 volt 277 volt	X-feed	
9018/_-2C	B W black white	NA none	Adjustable corner	
9003/_	G B W gray black white	NA none	Joining connector	
S-9001-R/6-__	B W black white	NA none	Recessed cover for end feed (Compatible with trimmed recessed track only)	
S-9010-R/6-__	B W black white	NA none	Recessed cover for middle feed (Compatible with trimmed recessed track only)	
S-9011-R/6-__	B W black white	NA none	Recessed cover for L-feed (Compatible with trimmed recessed track only)	
S-9013-R/6-__	B W black white	NA none	Recessed cover for end T-feed (Compatible with trimmed recessed track only)	
S-9017-R/6-__	B W black white	NA none	Recessed cover for end X-feed (Compatible with trimmed recessed track only)	
S-9001/TR1-__	B W black white	NA none	Recessed cover for end feed	
S-9011/TR1-__	B W black white	NA none	Recessed covers (right + left) for joints	

# Stucchi recessed track

## 2-Circuit Accessories

Part number	Amperage	Description	wImage
MA1-B-24-___-2-A27-B-C	410	1 amp	
	430	3 amp	
	450	5 amp	
	470	7 amp	
	610	10 amp	
MA1-B-24-___-2-A17-A-C	410	1 amp	
	430	3 amp	
	450	5 amp	
	470	7 amp	
	610	10 amp	