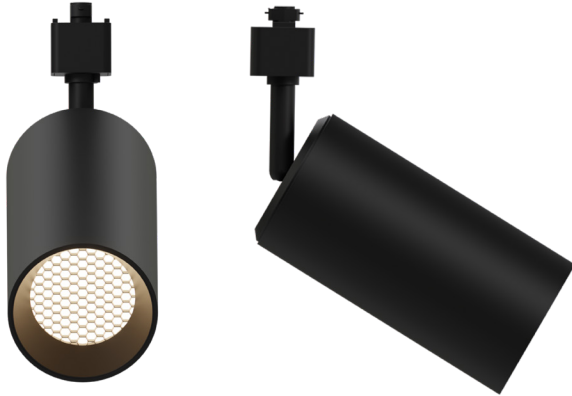


Point large

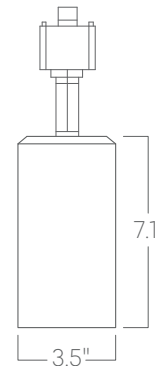


The Point series offers exceptional performance, four beam spreads and optional hex louver for low glare.

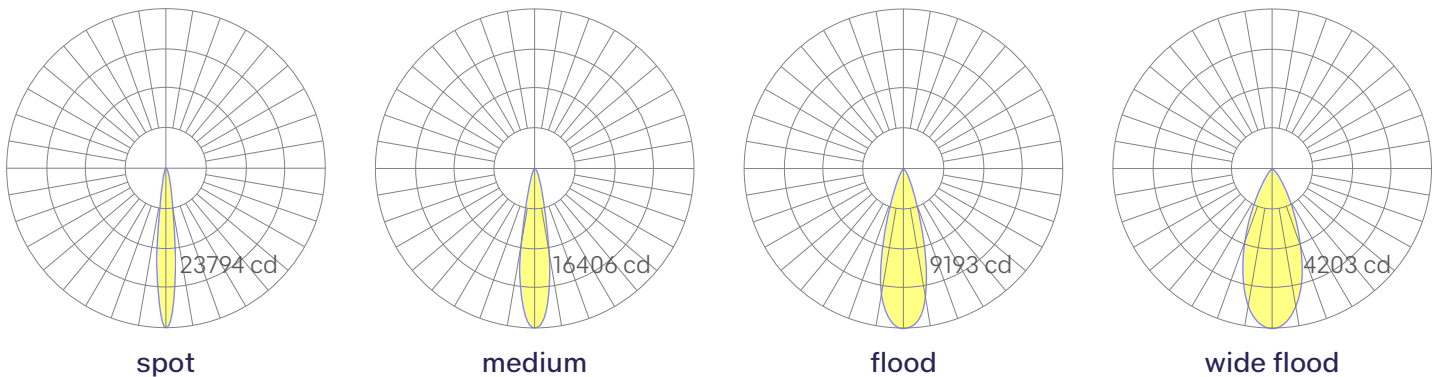
Features

- 360 degrees rotation, 90 degrees tilt
- Single cast cylinder
- Up to 109 lumens per watt delivered
- Four beam spreads available - field changeable
- Cast, recycled, premium aluminum housing
- Specifiable color temperature. CRI > 90, R9 >50
- 5 Year, 50,000 hour warranty, damp location rated
- Available in ELV or TRIAC dimming

Dimensions



Optics



Representative distribution and peak CBCP, center beam candlepower For other options see order information or IES files [here](#).

Point large

Ordering Information

For each option group below specify one option. If you don't see your preferred option listed, contact us for [help](#).

1	Fixture ID	2	Color Temperature	3	Output	4	Finish
	POINT LRG	27	2700K/90 CRI	HIGH	High output	W	White
		30	3000K/90 CRI			BLK	Black
		35	3500K/90 CRI			SLV	Silver will extend leadtimes.
		40	4000K/90 CRI			CC	Custom Color will extend leadtimes see finish options here .
5	Beam Spread	6	Track Adapter	7	Accessories		
SP	15° Beam	JTYPE	J-Type Compatible (default)	NA	None		
MED	24° Beam	HTYPE	H-Type Compatible	HEX	Hex Louver		
FL	38° Beam	GES	Global GES Compatible	DF	Diffusion Film		
WFL	60° Beam	TEK	Global 120V 2-Circuit, 2-Neutral Compatible	LSF	Linear Spread Film		
		HTEK	Global 277V 2-Circuit, 2-Neutral Compatible				

Track Adapters

	GES Adapter		TEK Adapter		HTEK Adapter
--	-------------	---	-------------	---	--------------

Performance

Beam Spread ¹	Watts	Lumens
Spot	32	3511
Medium	32	3474
Flood	32	3382
Wide Flood	32	3155

¹Based on 90 CRI and 3500K luminaire using one driver.
For 4000K multiply by 1.02, for 3000K, 0.98, for 2700K, 0.96.

Technical Information



click [here](#) or scan QR code

Wiring diagrams, PoE and sensor details