

GloDrop Narrow 2.5 direct

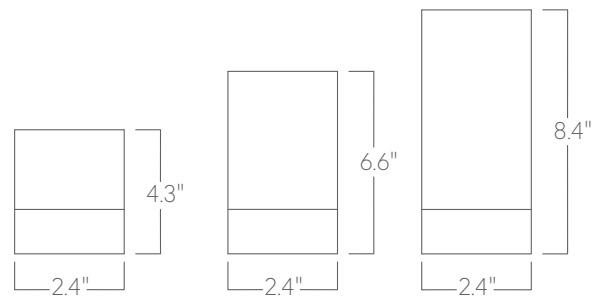


Accent lighting for surface or suspended applications. Featuring a decorative metallic band and a frosted acrylic lens, available in four beam-spreads.

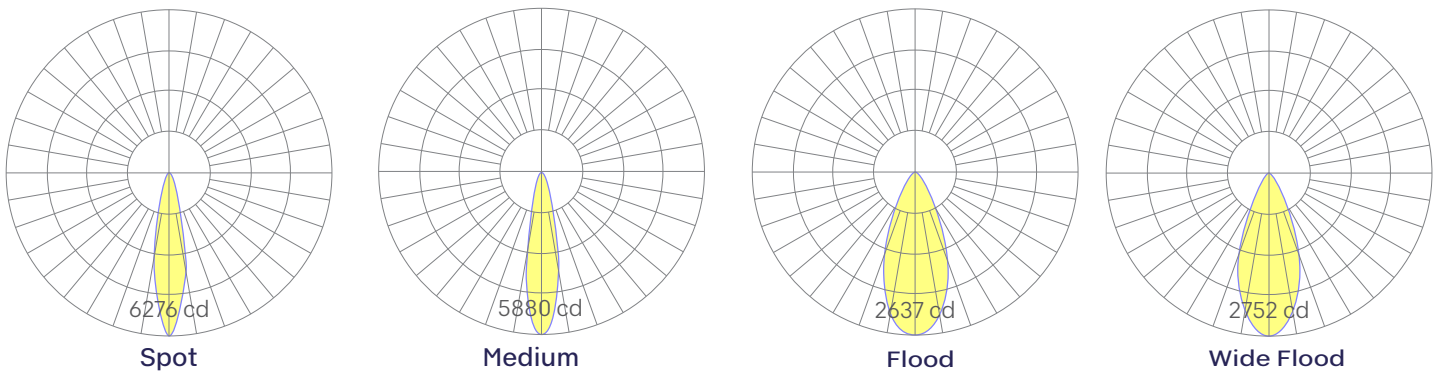
Features

- Decorative metallic band & frosted acrylic lens
- Extruded, recycled, premium aluminum housing
- Specifiable color temperature. CRI > 90, R9 >50
- 5 Year, 50,000 hour warranty, damp location rated
- WELL Building Standard compatible [learn more](#)

Dimensions



Optics



Representative distribution and peak candela. For other options see order information or IES files [here](#).

GloDrop Narrow 2.5 direct

Ordering Information

For each option group below specify one option. If you don't see your preferred option listed, contact us for [help](#).

| 1 | Fixture ID | 2 | Length | 3 | Color Temperature | 4 | Output |
|---|---------------------------------|--------------|---|------------|-------------------|-------------|---|
| | GloDrop-N | 4 | 4 inch nominal | 27 | 2700K/90 CRI | MED | Medium output |
| | | 6 | 6 inch nominal | 30 | 3000K/90 CRI | | |
| | | 8 | 8 inch nominal | 35 | 3500K/90 CRI | | |
| | | | | 40 | 4000K/90 CRI | | |
| 5 | Voltage | 6 | Driver | 7 | Finish | 8 | Mounting |
| | UNV Universal (120/277V) | DB | Standard 0-10V 1% According to fixture size, driver may be integral or remote. See page 4. | BLK | Black | PC | Pendant Cable |
| | | | | W | White | SM | Surface Mount |
| | | | | | | PS-X | Pendant Stem (12", 18", 24", 36", 48") |
| 9 | Beam Spread | 10 | Circuit | 11 | Options | | |
| | SP 17° Beam | NA | None | NA | None | | |
| | MED 22° Beam | EMPCK | Emergency battery pack Supplied in a dual remote enclosure with the LED driver | | | | |
| | FL 31° Beam | EMCKT | Emergency circuit May require additional power feeds | | | | |
| | WFL 50° Beam | | | | | | |

Performance

| Output ¹ | Watts | Lumens |
|---------------------|-------|--------|
| Medium | 16 | 1567 |

¹Based on 6" tall fixture, WFL beam spread, 90 CRI, and 3500K luminaire using one driver. Custom outputs available. Please consult factory.
For 4000K multiply by 1.02; for 3000K, 0.98; for 2700K, 0.96.

Technical Information

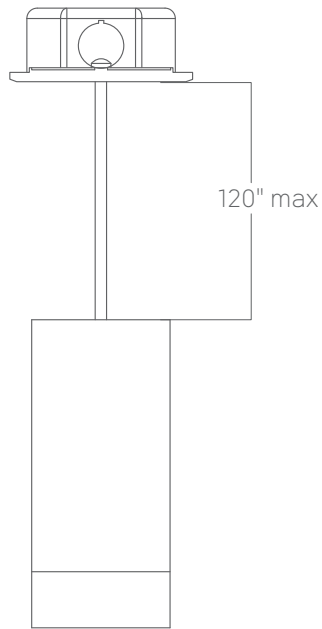


click [here](#) or scan QR code

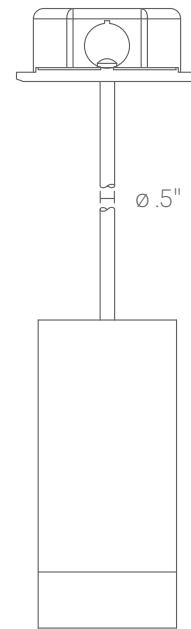
Wiring diagrams, PoE and sensor details

GloDrop Narrow 2.5 direct

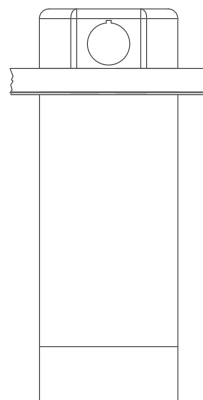
Mounting Options



Pendant Cable



Pendant stem



Surface Mount

GloDrop Narrow 2.5 direct

Drop LED Driver Locations (if no emergency battery pack specified)
If specified with emergency battery pack, it will be supplied in a dual remote enclosure with LED driver.

GloDrop Narrow Direct

| Height | Driver |
|--------|----------|
| 4" | Remote |
| 6" | Remote |
| 8" | Integral |

GloDrop Wide Direct

| Height | Driver |
|--------|----------|
| 4" | Remote |
| 6" | Integral |
| 8" | Integral |

Remote Driver Distances

| Wire Gauge | Maximum Distance |
|------------|------------------|
| 12 | 100 ft |
| 14 | 80 ft |
| 16 | 50 ft |
| 18 | 35 ft |

Remote Driver Enclosure

