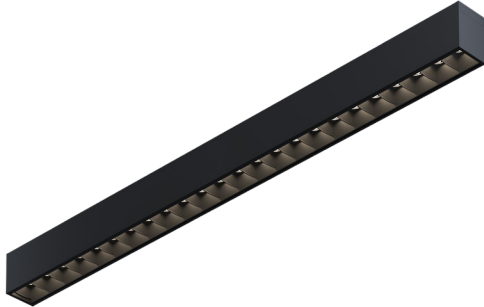


# Sharp module

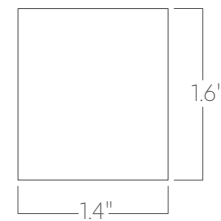


The Sharp module uses specially designed beam shaping optical cells for glare free and effective lighting.

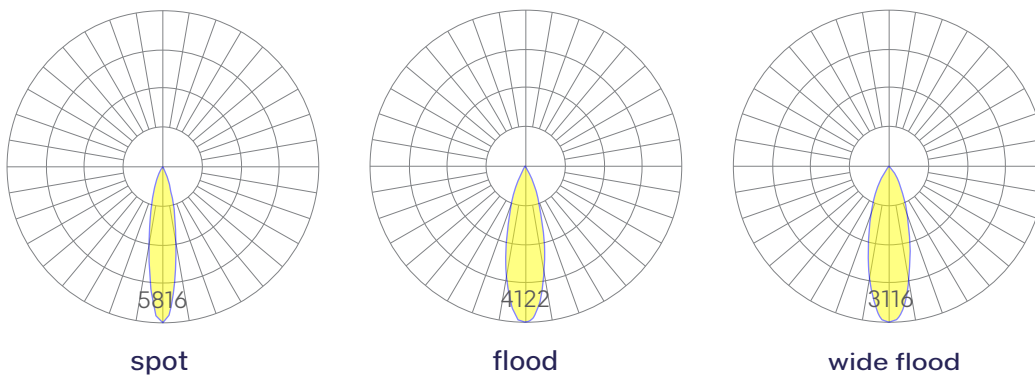
## Features

- Magnetically held and easily repositioned on site
- Available in lengths up to 8' (6" increments)
- Extruded, recycled, premium aluminum housing
- Aluminum core LED boards, specifiable optics
- Specifiable color temperature. CRI > 90, R9 >50
- 5 Year, 50,000 hour warranty

## Dimensions



## Optics



Representative distribution and peak candela. For other options see order information or IES files [here](#).

# Sharp module



## Ordering Information



Example: MAG-BAF- 2' - 35 - MED - BLK - W - SP - NA

Fixture ID	1	Length (Nominal)	2	Color Temperature	3	Output	4
<b>MAG-BAF</b>		<b>1</b> 1ft <b>2</b> 2ft <b>4</b> 4ft <b>6</b> 6ft <b>8</b> 8ft <b>X'</b> Specify length		<b>27</b> 2700K/90 CRI <b>30</b> 3000K/90 CRI <b>35</b> 3500K/90 CRI <b>40</b> 4000K/90 CRI		<b>LOW</b> Low output <b>MED</b> Medium output <b>HIGH</b> High output	
		<small>*Available in nominal 1' increments, maximum total length of 8'.                 </small>					
Finish	5	Beam Spread	6	Circuit	7		
<b>7a - Housing</b> <b>W</b> White <b>BLK</b> Black <b>CC</b> Custom Color		<b>SP</b> 20° Beam; 5816 CBCP <b>FL</b> 26° Beam; 4122 CBCP <b>WFL</b> 32° Beam; 3116 CBCP		<b>NA</b> None <b>EMPCK</b> Emergency Battery Pack <b>EMCKT</b> Emergency Circuit			
<b>7b - Louver</b> <b>W</b> White <b>BLK</b> Black							
<small>*Custom Color. See finish options <a href="#">here</a>.                      White SJ cord and canopy provided; for other requests, see section 12 to specify.                 </small>				<small>*EM sections are fixed in position at the factory by code and must be marked on the submittal drawing.                 </small>			

## Performance

Output <sup>1</sup>	Watts/ft	Lumens/ft
Low	5	313
Medium	7.25	454
High	10	613

Based on a typically configured 90 CRI, 3500K luminaire using one driver and FL beam spread.

<sup>1</sup>For 4000k, multiply by 105; for 3000k, 0.9%; for 2700k, 0.92.