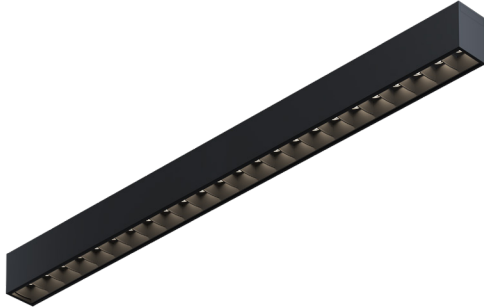


Baffle module

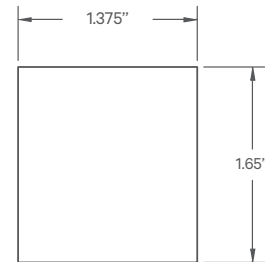


Baffle module uses specially designed louver for 'quiet', but effective lighting

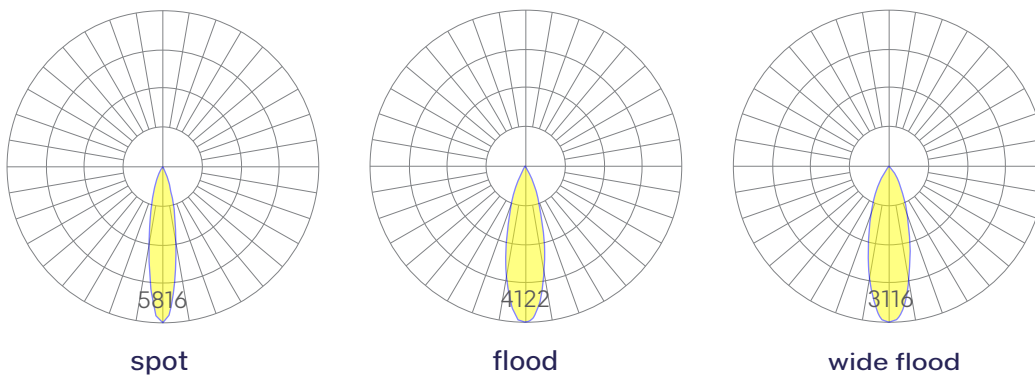
Features

- Magnetically held and easily repositioned on site
- Available in lengths up to 8' (6" increments)
- Extruded, recycled, premium aluminum housing
- Aluminum core LED boards, specifiable optics
- Specifiable color temperature. CRI > 90, R9 >50
- 5 Year, 50,000 hour warranty

Dimensions



Optics



Representative distribution and peak candela. For other options see order information or IES files [here](#).

Baffle module



Ordering Information

- - - - -

1 2 3 4 5 6

Example: MAG-BAF - 2' - 35 - MED - W - SP - NA

Fixture ID	<input type="text" value="1"/>	Length (Nominal)	<input type="text" value="2"/>	Color Temperature	<input type="text" value="3"/>	Output	<input type="text" value="4"/>
MAG-BAF		1 1 ft 2 2 ft 4 4 ft 6 6 ft 8 8 ft X' Specify length		27 2700K/90 CRI 30 3000K/90 CRI 35 3500K/90 CRI 40 4000K/90 CRI		MED Medium output	
<small>*Custom lengths up to 8'. Specify to the nearest 6" increments.</small>							
Finish	<input type="text" value="5"/>	Beam Spread	<input type="text" value="6"/>	Circuit	<input type="text" value="7"/>		
W White BLK Black CC' Custom Color		SP 20° Beam; 5816 CBCP FL 26° Beam; 4122 CBCP WFL 32° Beam; 3116 CBCP		NA None EM120V Emergency Pack EM277V Emergency Pack EMCKT Emergency Circuit			
<small>*Custom Color. See finish options here.</small>							
<small>*EM sections are fixed in position at the factory by code and must be marked on the submittal drawing.</small>							

Performance

Output ¹	Watts/ft	Lumens/ft
Low	4	335
Medium	7	528
High	9	659

Based on a typically configured 90 CRI, 3500k luminaire using one driver.

¹For 4000k, multiply by 1.05, for 3000k, 0.96, for 2700k, 0.92.