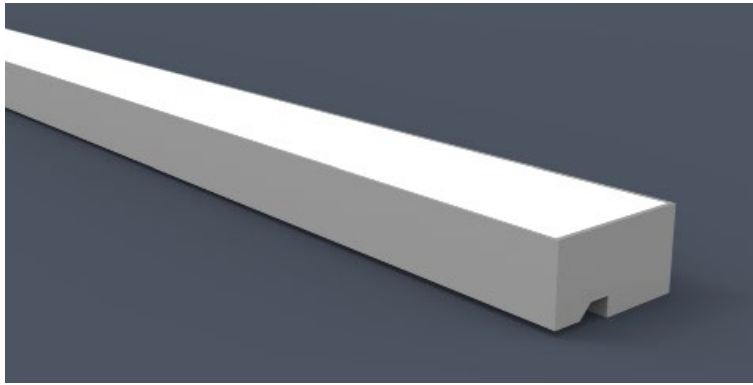


DATE _____ PROJECT _____ FIRM _____ TYPE _____



FEATURES

- Made for Easy-Installation Inside Pre-fabricated or General Light Coves
- Up to 12ft can be Mounted at a Time; Longer Lengths Connected via 'Quick Connect' for Continuous End-to-End Mounting
- CRI 90+ Standard; R9>50
- 2700K, 3000K, 3500K, & 4000K Color Temperatures Available
- 5 Year, 50,000 Hour Fixture Warranty
- Available with PoE- [See More](#)

APPLICATIONS Offices, Lobbies, Retail Stores, Classrooms, Reception Areas, & Corridors

FINISH Standard Powder-Coated White

CONSTRUCTION Extruded Aluminum Housing with Sheet Metal End Plates.

OPTICS Satin Acrylic Diffuser



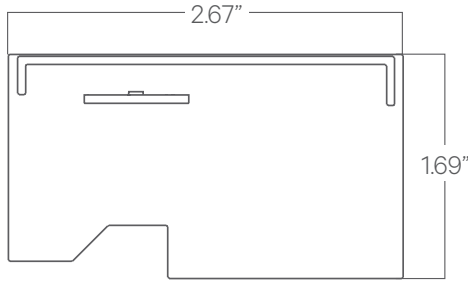
DRIVERS, SENSORS, & POE



For Wiring Diagrams, POE, and Sensor Information Click [Here](#)

ELECTRICAL Integral Driver with 0-10V Dimming Standard. Several Driver Options Available

EXTRUSION DIMENSIONS



LED SYSTEM INFORMATION

	Nominal System Watts	Nominal Delivered Lumens	Nominal Efficacy
Standard (LTG1)	7.25 W/ft	725 lm/ft	100 LPW
Low (LTG2)	5 W/ft	510 lm/ft	102 LPW
High (LTG3)	10 W/ft	980 lm/ft	98 LPW

Based on a 90CRI, 3500K luminaire using one driver. Custom outputs available; specify below.

ORDERING



1 - FIXTURE ID

EZ-W

2 - LENGTH

- 2 - 2 ft
- 4 - 4 ft
- 8 - 8 ft
- 12 - 12 ft
- X'X" - Specify Length

*For patterns, must submit cove details to factory for optimal configuration.

3 - COLOR TEMP

- 27 - 2700K/90 CRI
- 30 - 3000K/90 CRI
- 35 - 3500K/90 CRI
- 40 - 4000K/90 CRI
- WD* - Warm Dim
2200K-3000K
- TW** - Tunable White
2700K-6500K

*Requires WD10 Driver
**Requires TW10 Driver

4 - LED SYSTEM

- LTG1 - Standard
- LTG2 - Low
- LTG3 - High
- LTGC - Custom Output

5 - VOLTAGE

- UNV - Universal
(120/277V)
- 347V* - 347V

*Must use DB Driver

6 - DRIVER

- DB - Standard 1% Dimming (0-10V)
- DB.1% - 0.1% Dimming (0-10V)
- ELV-TRI - 2-wire 1% Dimming (120V only)
ELV and TRIAC Compatible
- LDE1 - Lutron Digital EcoSystem
- DALI - DALI-2 Driver
- PoE - Power over Ethernet. Consult Factory for Compatibility
- TW10 - Dual Channel, 0-10V For Color Tuning (CCT and Intensity Control)
- WD10 - 0-10V Driver For Warm Dimming
- PSQ - Lutron 0-10V For Color Tuning

7 - FINISH

W - White (Standard)

8 - OTHER OPTIONS

- EM 120V - Emergency Pack
- EM 277V - Emergency Pack
- EMCKT - Emergency Circuit

DATE

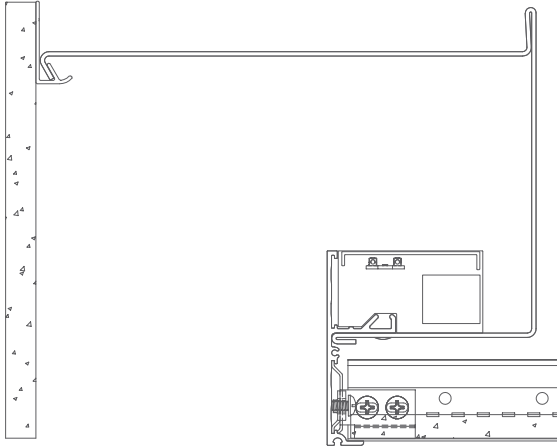
PROJECT

FIRM

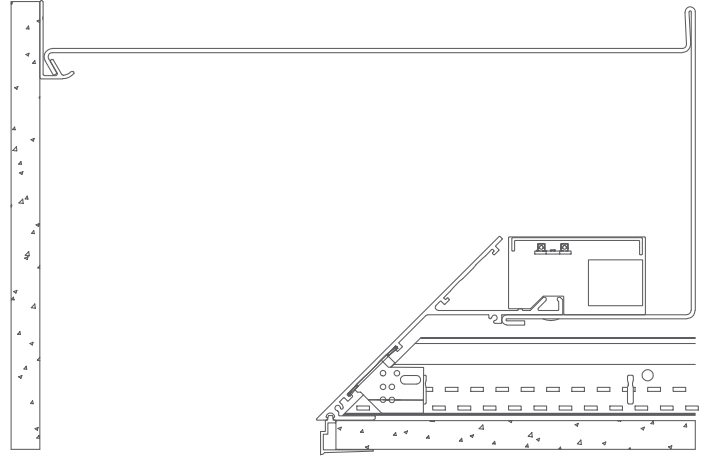
TYPE

MOUNTING DETAILS

COVE



KNIFE EDGE



Pre-Built Cove

