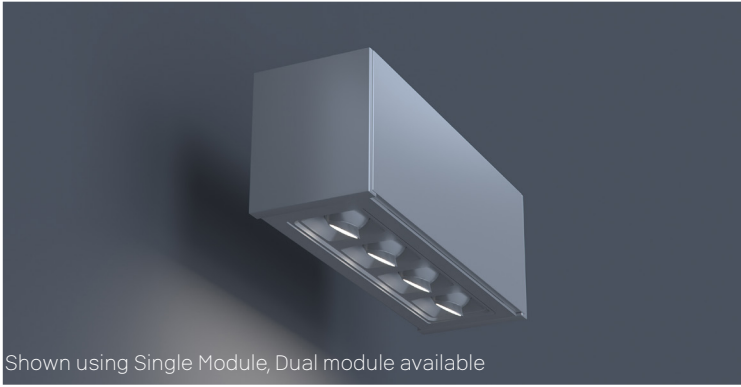


DATE | PROJECT | FIRM | TYPE



Shown using Single Module, Dual module available

FEATURES

- Fixed 4-Optic Downlight Module with Specially Designed Wall Wash Optic
- 8 inches in Length
- Optics Optimized for 1:1 Wall Wash (ie - 30" from wall, 30" on center)
- Customizable Placement (Consult Factory; Drawing Required)
- CRI 90+ Standard; R9>50
- 2700K, 3000K, 3500K & 4000K Color Temperatures Available
- 5 Year, 50,000 Hour Fixture Warranty
- Available with PoE

APPLICATIONS Commerical Interiors, Galleries, Retail, Museums, Reception Areas, Hotels, Restaurants

FINISH Powder-Coated Black Standard. Optional White Powder-Coated Finish. Custom RAL Colors Available. Louver Available in Black Only.

CONSTRUCTION Die Cast and Formed Sheet Metal.

OPTICS Custom Tuned Optics to Provide 1:1 Wall Wash

FIXTURE RATINGS & CERTIFICATIONS Union Made ETL Listed Made In The USA Damp Location Rated



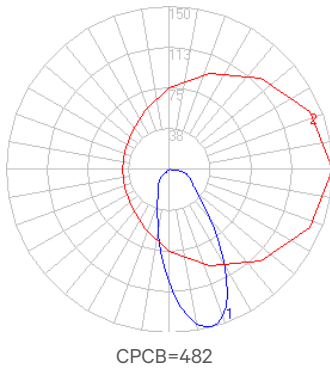
DRIVERS & SENSORS

For Wiring Diagrams and Sensor Information Click [Here](#)



ELECTRICAL 0-10V Remote Driver Standard.

LIGHT DISTRIBUTION



LED SYSTEM INFORMATION

	Nominal System Watts	Nominal Delivered Lumens
Standard (LTG1)	12 W	360 lm
Low (LTG2)	9 W	270 lm
High (LTG3)	16.75W	505 lm

NOTE: Based on a 3500K luminaire

ORDERING



1 - FIXTURE ID

DL WW -SA

2 - QUANTITY

S - Single
D - Dual

3 - COLOR TEMP

27 - 2700K/90 CRI
30 - 3000K/90 CRI
35 - 3500K/90 CRI
40 - 4000K/90 CRI

4 - LED SYSTEM

LTG1 - Standard
LTG2 - Low
LTG3 - High

5 - VOLTAGE

UNV - Universal (120/277V)
347V* - 347V
*Must use DB Driver

6 - DRIVER

DB - Standard 1% Dimming (0-10V)
DB.1% - 0.1% Dimming (0-10V)
DALI - DALI-2 Driver
PoE - Power over Ethernet. Consult Factory for Compatibility

7 - MOUNTING

SM - Surface Mount
PS - Pendant Stem (6", 12", 18", 24")

8 - FINISH

BLK - Black (Standard)
CC - Custom Color (provide RAL#)

*White stems and canopy provided. Must specify for other requests.

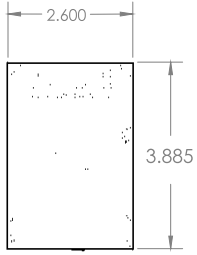
DATE

PROJECT

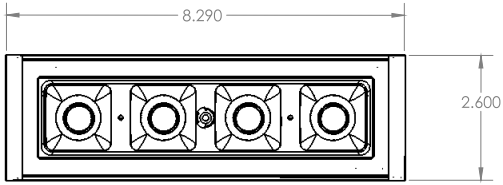
FIRM

TYPE

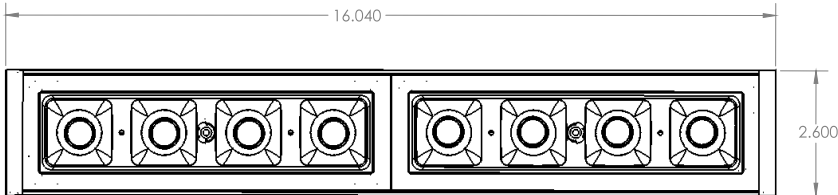
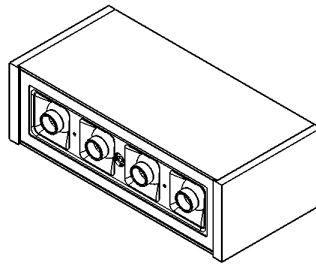
DIMENSIONS



Cross Section View



Bottom View - Single



Bottom View - Dual

