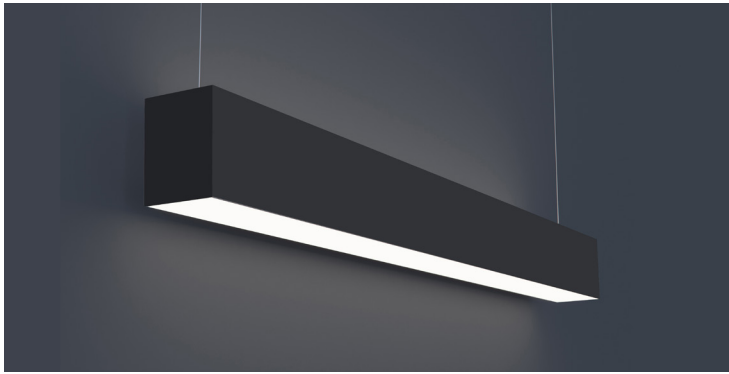




LS2DL UPDN

A linear system using specifiable modular downlights. Standard and custom placement of modules available in three different forms: fixed, adjustable, and wall wash. All available with various beam spreads. Linear patterns offered giving this system a wide range of custom capabilities.

DATE _____ PROJECT _____ FIRM _____ TYPE _____



FEATURES

- Direct/Indirect Linear Lighting with Optional Downlight Modules
- Downlight Modules Customizable to Desired Placement
(Must Provide Drawing)
- Available In Made To Measure Lengths Accurate Up To 1/16"
- Patterns Available (See Page 2)
- Damp Location Rated
- CRI 90+ Standard; R9>50
- 5 Year, 50,000 Hour Fixture Warranty
- 2700K, 3000K, 3500K, 4000K, and 5000K Color Temperatures Available

APPLICATIONS

Offices, Lobbies, Retail Stores, Classrooms, Reception Areas & Corridors

CONSTRUCTION

Extruded Aluminum Housing with Cast End Caps.
Formed Steel Gear Tray

OPTICS

Extruded High Transmission Satin Acrylic Lens with No LED Imaging. Additional Optics Available

WARRANTY

5 Year Limited Warranty (Covers Standard Components)

FINISH

Standard Powder-Coated White. Custom RAL Colors Available

FIXTURE RATINGS & CERTIFICATIONS

Union Made Made In The USA
ETL Listed Damp Location Rated



DRIVERS & SENSORS

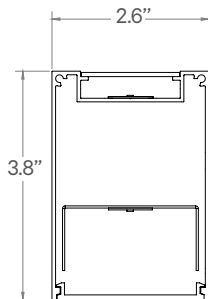
For Wiring Diagrams and Sensor Information Click [Here](#)



ELECTRICAL

Integral Driver with 0-10V Dimming Standard. Several Driver Options Available

EXTRUSION DIMENSIONS



LED SYSTEM INFORMATION

	Nominal System Watts		Nominal Delivered Lumens		Nominal Efficacy
	DIRECT	INDIRECT	DIRECT	INDIRECT	
Standard (LTG1)	7.25 W/ft	7.25 W/ft	680 lm/ft	700 lm/ft	90 LPW
Low (LTG2)	5 W/ft	5 W/ft	470 lm/ft	505 lm/ft	93 LPW
High (LTG3)	10 W/ft	10 W/ft	780 lm/ft	825 lm/ft	85 LPW

Based on a 3500K luminaire using one driver. Custom outputs available; specify below.

ORDERING

1 2 3 IN - D - 4 5 6 7 8 IN - D - 9 10

1 - FIXTURE ID

LS2DL UPDN

2 - LENGTH

- 2 - 2 ft
- 4 - 4 ft
- 8 - 8 ft
- X'-X" - Specify Length
- PAT - Pattern
(Consult Factory)

3 - COLOR TEMP

- 27 - 2700K/90 CRI
- 30 - 3000K/90 CRI
- 35 - 3500K/90 CRI
- 40 - 4000K/90 CRI
- 50 - 5000K/90 CRI
- TW* - Tunable White
- RGBW** - RGB + 3000K

*Must use DMX or TW10 Driver
**Must use DMX Driver

4 - LED SYSTEM

IN - INDIRECT

- LTG1 - Standard
- LTG2 - Low
- LTG3 - High
- LTGC - Custom Output

D - DIRECT

- LTG1 - Standard
- LTG2 - Low
- LTG3 - High
- LTGC - Custom Output

5 - VOLTAGE

UNV - Universal
(120/277V)

6 - DRIVER

- DB - Standard Dimming (0-10V)
- DB1% - 1% Dimming (0-10V)
- DB.1% - 0.1% Dimming (0-10V)
- LTEA - Lutron 2-wire 1% Dimming (120V only)
- LDE1 - Lutron Digital EcoSystem
- LDE5 - 5 Series EcoSystem; 5% Dimming
- DALI - DALI-2 Driver
- PoE - Power over Ethernet. Consult Factory for Compatibility
- DMX - For Color Tuning and RGBW (Remote)
- TW10 - Dual Channel, 0-10V For Color Tuning (CCT and Intensity Control)

7 - FINISH

- W - White (Standard)
- BLK* - Black
- CC* - Custom Color
(provide RAL#)

*White cord and canopy provided. Must specify for other requests.

8 - MOUNTING

- AC - Air Craft Cable (50")
- WM - Wall Mount

9 - OPTICS

IN - INDIRECT

- SD - Standard Diffuser
- AVI-BW - 140° AVI-OPTIC
Batwing

D - DIRECT

- FL - Flat Lens

10 - OTHER OPTIONS

- DC - Dual Circuit
(Separate Up/Dn Control)
- EM 120V - Emergency Pack
- EM 277V - Emergency Pack
- EMCKT - Emergency Circuit

DATE

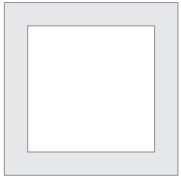
PROJECT

FIRM

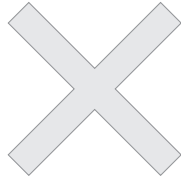
TYPE

PATTERNS

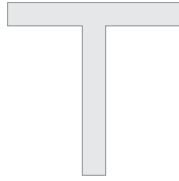
Patterns feature illuminated corners and angles. **Must consult factory for custom corners, patterns and elevations.**



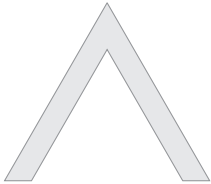
Square Patterns



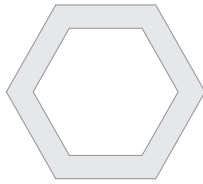
X Patterns



T Patterns

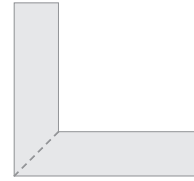


Custom Angles



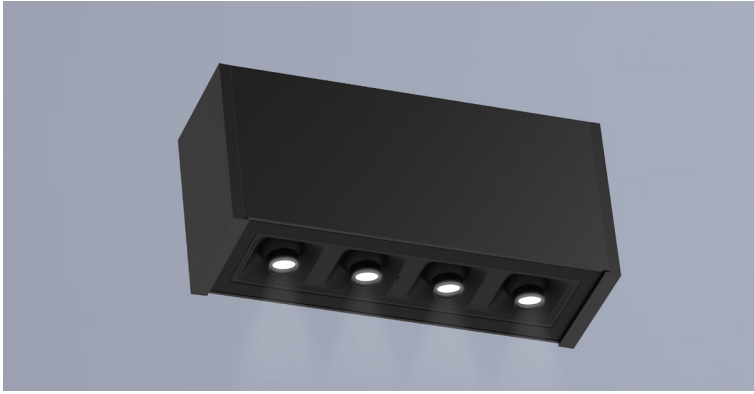
Custom Patterns

LENS CUT



Mitered

DATE	PROJECT	FIRM	TYPE
------	---------	------	------



FEATURES

- 4-Optic Downlight Module
- Customizable Placement (Consult Factory; Drawing Required)
- Three Beam Spreads Available
- Available in Lengths Up To 8' (6" Increments)
- CRI 90+ Standard; R9>50
- 5 Year, 50,000 Hour Fixture Warranty
- 2700K, 3000K, 3500K & 4000K Color Temperatures Available
- 0-10V Dimmable

APPLICATIONS Commercial Interiors, Galleries, Retail, Museums, Reception Areas, Hotels, Restaurants

CONSTRUCTION Die Cast and Formed Sheet Metal. **OPTICS** Custom Designed TIR Optics. Three Optional Beam Spreads.

WARRANTY 5 Year Limited Warranty (Covers Standard Components) **FINISH** Powder-Coated Black Standard. Optional White Powder-Coated Finish. Custom RAL Colors Available. Louver Black Only.

FIXTURE RATINGS & CERTIFICATIONS Union Made ETL Listed Made In The USA Damp Location Rated

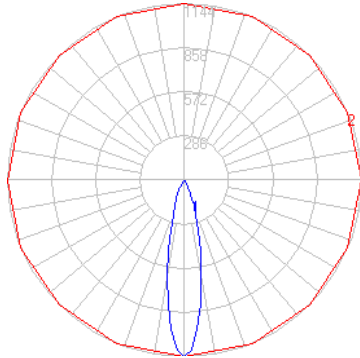


DRIVERS
For Wiring Diagrams Click [Here](#)



ELECTRICAL 0-10V Remote Driver (typically located in LS2 housing) Standard. Consult Factory per Specific Layout.

LIGHT DISTRIBUTION

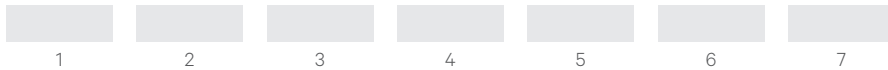


LED SYSTEM INFORMATION

	Nominal System Watts	Nominal Delivered Lumens
Standard (LTG1)	12 W	728 lm
Low (LTG2)	9 W	540 lm
Low (LTG3)	16.75W	908 lm

NOTE: Based on 'SP' option in 3500K

ORDERING



1 - FIXTURE ID

DL FXD

2 - COLOR TEMP

- 27 - 2700K/90 CRI
- 30 - 3000K/90 CRI
- 35 - 3500K/90 CRI
- 40 - 4000K/90 CRI

3 - LED SYSTEM

- LTG1 - Standard
- LTG2 - Low
- LTG3 - High

4 - VOLTAGE

UNV - Universal (120/277V)

5 - DRIVER

- DB - Standard Dimming (0-10V)
- DB1% - 1% Dimming (0-10V)
- DB.1% - 0.1% Dimming (0-10V)
- DALI - DALI-2 Driver

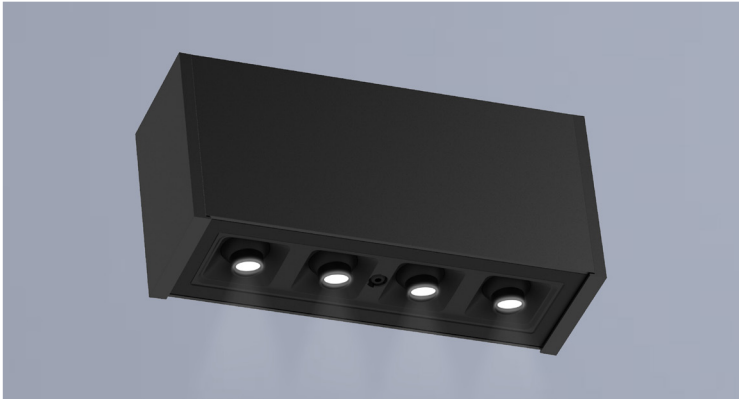
6 - BEAM SPREAD

- SP - Spot
- FL - Flood
- WFL - Wide Flood
- XWFL - Extra Wide Flood

7 - FINISH


- BLK - Black (Standard)
- CC - Custom Color (provide RAL#)

DATE	PROJECT	FIRM	TYPE
------	---------	------	------



FEATURES

- 4-Optic Adjustable Downlight Module with Pan and Tilt Capability
- Customizable Placement (Consult Factory; Drawing Required)
- Three Beam Spreads Available
- CRI 90+ Standard; R9>50
- Available In Custom Lengths Up To 8' (1 Foot Increments)
- 5 Year, 50,000 Hour Fixture Warranty
- 2700K, 3000K, 3500K & 4000K Color Temperatures Available

APPLICATIONS	Commercial Interiors, Galleries, Retail, Museums, Reception Areas, Hotels, Restaurants		
CONSTRUCTION	Die Cast and Formed Sheet Metal.	OPTICS	Custom Designed TIR Optic. Three Optional Beam Spreads.
WARRANTY	5 Year Limited Warranty (Covers Standard Components)	FINISH	Powder-Coated Black Standard. Optional White Powder-Coated Finish. Custom RAL Colors Available. Louver Black Only.
FIXTURE RATINGS & CERTIFICATIONS	Union Made ETL Listed	Made In The USA Damp Location Rated	
ELECTRICAL	0-10V Remote Driver (typically located in LS2 housing) Standard. Consult Factory per Specific Layout.		DRIVERS For Wiring Diagrams Click Here



LED SYSTEM INFORMATION

	Nominal System Watts	Nominal Delivered Lumens
Standard (LTG1)	12 W	728 lm
Low (LTG2)	9 W	540 lm
Low (LTG3)	16.75W	908 lm

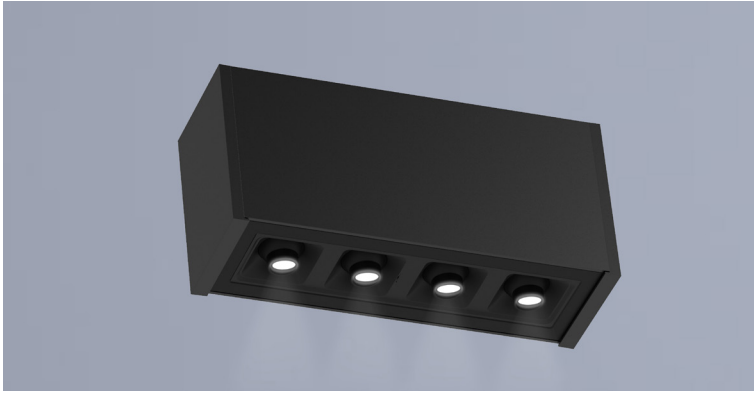
NOTE: Based on 'SP' option in 3500K

ORDERING



1 - FIXTURE ID DL ADJ	2 - COLOR TEMP 27 - 2700K/90 CRI 30 - 3000K/90 CRI 35 - 3500K/90 CRI 40 - 4000K/90 CRI	3 - LED SYSTEM LTG1 - Standard LTG2 - Low LTG3 - High	4 - VOLTAGE UNV - Universal (120/277V)	5 - DRIVER DB - Standard Dimming (0-10V) DB1% - 1% Dimming (0-10V) DB.1% - 0.1% Dimming (0-10V) DALI - DALI-2 Driver
6 - BEAM SPREAD SP - Spot FL - Flood WFL - Wide Flood XWFL - Extra Wide Flood	7 - FINISH BLK - Black (Standard) CC - Custom Color (provide RAL#)			

DATE	PROJECT	FIRM	TYPE
------	---------	------	------



FEATURES

- Fixed 4-Optic Downlight Module with Specially Designed Wall Wash Optic
- Customizable Placement (Consult Factory; Drawing Required)
- Designed For Even Wall Lighting at 1:1 Spacing
- CRI 90+ Standard; R9>50
- Glare Control Accessory Available
- Module is Dimmable Using a 0-10V Control Wired to the Magneto Track
- 2700K, 3000K, 3500K & 4000K Color Temperatures Available

APPLICATIONS Commercial Interiors, Galleries, Retail, Museums, Reception Areas, Hotels, Restaurants

CONSTRUCTION Die Cast and Formed Sheet Metal. **OPTICS** Custom Tuned Optics to Provide 1:1 Wall Wash

WARRANTY 5 Year Limited Warranty (Covers Standard Components) **FINISH** Powder-Coated Black Standard. Optional White Powder-Coated Finish. Custom RAL Colors Available. Louver Black Only.

FIXTURE RATINGS & CERTIFICATIONS Union Made ETL Listed Made In The USA Damp Location Rated



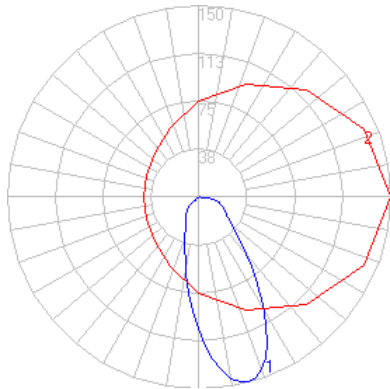
DRIVERS

For Wiring Diagrams Click [Here](#)



ELECTRICAL 0-10V Remote Driver (typically located in LS2 housing) Standard. Consult Factory per Specific Layout.

LIGHT DISTRIBUTION



LED SYSTEM INFORMATION

	Nominal System Watts	Nominal Delivered Lumens
Standard (LTG1)	12 W	360 lm
Low (LTG2)	9 W	270 lm
Low (LTG3)	16.75W	505 lm

NOTE: Based on a 3500K luminaire

ORDERING

1	2	3	4	5	6
---	---	---	---	---	---

- | | | | | | |
|--------------------------------|---|---|--|---|---|
| 1 - FIXTURE ID
DL WW | 2 - COLOR TEMP
27 - 2700K/90 CRI
30 - 3000K/90 CRI
35 - 3500K/90 CRI
40 - 4000K/90 CRI | 3 - LED SYSTEM
LTG1 - Standard
LTG2 - Low
LTG3 - High | 4 - VOLTAGE
UNV - Universal (120/277V) | 5 - DRIVER
DB - Standard Dimming (0-10V)
DB1% - 1% Dimming (0-10V)
DB.1% - 0.1% Dimming (0-10V)
DALI - DALI-2 Driver | 6 - FINISH
BLK - Black (Standard)
CC - Custom Color (provide RAL#) |
|--------------------------------|---|---|--|---|---|