



LS2DL


A linear system using specifiable modular downlights. Standard and custom placement of modules available in three different forms: fixed, adjustable, and wall wash. All available with various beam spreads. Linear patterns offered giving this system a wide range of custom capabilities.

DATE	PROJECT	FIRM	TYPE
------	---------	------	------



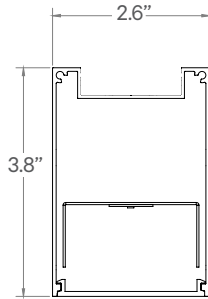
FEATURES

- 100% Direct Linear Lighting with Optional Downlight Modules
- Downlight Modules Customizable to Desired Placement
(Must Provide Drawing)
- Available In Made To Measure Lengths Accurate Up To 1/16"
- Patterns Available (See Page 2)
- Damp Location Rated
- CRI 90+ Standard; R9>50
- 5 Year, 50,000 Hour Fixture Warranty
- 2700K, 3000K, 3500K, 4000K, and 5000K Color Temperatures Available

APPLICATIONS	Offices, Lobbies, Retail Stores, Classrooms, Reception Areas & Corridors		
CONSTRUCTION	Extruded Aluminum Housing with Cast End Caps. Formed Steel Gear Tray	OPTICS	Extruded High Transmission Satin Acrylic Lens with No LED Imaging. Additional Optics Available
WARRANTY	5 Year Limited Warranty (Covers Standard Components)	FINISH	Standard Powder-Coated White. Custom RAL Colors Available
FIXTURE RATINGS & CERTIFICATIONS	Union Made ETL Listed	Made In The USA Damp Location Rated	
ELECTRICAL	Integral Driver with 0-10V Dimming Standard. Several Driver Options Available		DRIVERS & SENSORS For Wiring Diagrams and Sensor Information Click Here



EXTRUSION DIMENSIONS



LED SYSTEM INFORMATION

	Nominal System Watts	Nominal Delivered Lumens	Nominal Efficacy
Standard (LTG1)	7.25 W/ft	680 lm/ft	94 LPW
Low (LTG2)	5 W/ft	475 lm/ft	95 LPW
High (LTG3)	10 W/ft	925 lm/ft	92 LPW

Based on a 3500K luminaire using one driver. Custom outputs available; specify below.

ORDERING	1	2	3	4	5	6	7	8	9	10	11
-----------------	---	---	---	---	---	---	---	---	---	----	----

1 - FIXTURE ID LS2DL	2 - LENGTH 2 - 2 ft 4 - 4 ft 8 - 8 ft X'-X" - Specify Length PAT - Pattern (Consult Factory)	3 - COLOR TEMP 27 - 2700K/90 CRI 30 - 3000K/90 CRI 35 - 3500K/90 CRI 40 - 4000K/90 CRI 50 - 5000K/90 CRI TW* - Tunable White RGBW** - RGB + 3000K *Must use DMX or TW10 Driver **Must use DMX Driver	4 - LED SYSTEM LTG1 - Standard LTG2 - Low LTG3 - High LTGC - Custom Output	5 - VOLTAGE UNV - Universal (120/277V)	6 - DRIVER DB - Standard Dimming (0-10V) DB1% - 1% Dimming (0-10V) DB.1% - 0.1% Dimming (0-10V) LTEA - Lutron 2-wire 1% Dimming (120V only) LDE1 - Lutron Digital EcoSystem LDE5 - 5 Series EcoSystem; 5% Dimming PoE - Power over Ethernet. Consult Factory for Compatibility DMX - For Color Tuning and RGBW (Remote) TW10 - Dual Channel, 0-10V For Color Tuning (CCT and Intensity Control)	7 - FINISH W - White (Standard) BLK* - Black CC* - Custom Color (provide RAL number**) CWF* - Custom Wood Finish (provide color**)	8 - MOUNTING AC - Air Craft Cable (50") SM - Surface Mount WM - Wall Mount	9 - OPTICS SD - Standard Diffuser ASYM - Asymmetric Optic	11 - OTHER OPTIONS EM 120V - Emergency Pack EM 277V - Emergency Pack EMCKT - Emergency Circuit
--------------------------------	---	--	---	---	---	---	--	--	--

*White cord and canopy provided.
Must specify for other requests.
**(See [here](#) for finish options)

DATE

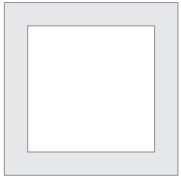
PROJECT

FIRM

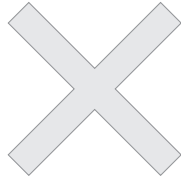
TYPE

PATTERNS

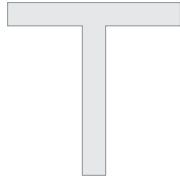
Patterns feature illuminated corners and angles. **Must consult factory for custom corners, patterns and elevations.**



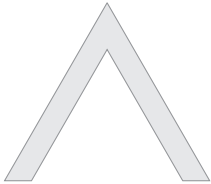
Square Patterns



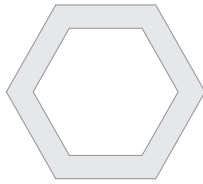
X Patterns



T Patterns

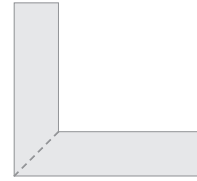


Custom Angles



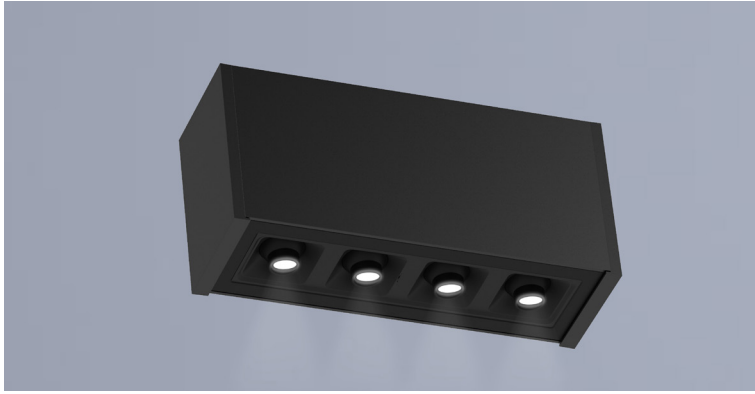
Custom Patterns

LENS CUT




Mitered

DATE	PROJECT	FIRM	TYPE
------	---------	------	------



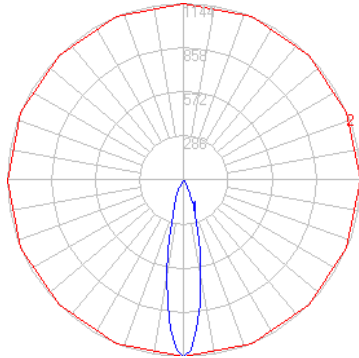
FEATURES

- 4-Optic Downlight Module
- Customizable Placement (Consult Factory; Drawing Required)
- Three Beam Spreads Available
- Available in Lengths Up To 8' (6" Increments)
- CRI 90+ Standard; R9>50
- 5 Year, 50,000 Hour Fixture Warranty
- 2700K, 3000K, 3500K & 4000K Color Temperatures Available
- 0-10V Dimmable

APPLICATIONS	Commercial Interiors, Galleries, Retail, Museums, Reception Areas, Hotels, Restaurants		
CONSTRUCTION	Die Cast and Formed Sheet Metal.	OPTICS	Custom Designed TIR Optics. Three Optional Beam Spreads.
WARRANTY	5 Year Limited Warranty (Covers Standard Components)	FINISH	Powder-Coated Black Standard. Optional White Powder-Coated Finish. Custom RAL Colors Available. Louver Black Only.
FIXTURE RATINGS & CERTIFICATIONS	Union Made ETL Listed	Made In The USA Damp Location Rated	
ELECTRICAL	0-10V Remote Driver (typically located in LS2 housing) Standard. Consult Factory per Specific Layout.		DRIVERS For Wiring Diagrams Click Here



LIGHT DISTRIBUTION



LED SYSTEM INFORMATION

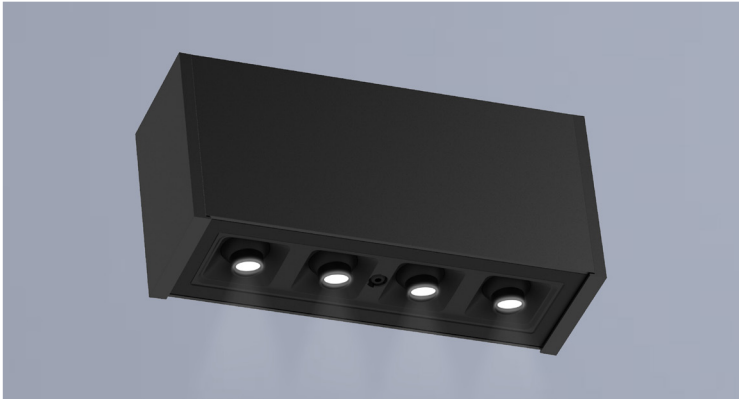
	Nominal System Watts	Nominal Delivered Lumens
Standard (LTG1)	12 W	728 lm
Low (LTG2)	9 W	540 lm
Low (LTG3)	16.75W	908 lm

NOTE: Based on 'SP' option in 3500K

ORDERING	1	2	3	4	5	6	7
-----------------	---	---	---	---	---	---	---


1 - FIXTURE ID DL FXD	2 - COLOR TEMP 27 - 2700K/90 CRI 30 - 3000K/90 CRI 35 - 3500K/90 CRI 40 - 4000K/90 CRI	3 - LED SYSTEM LTG1 - Standard LTG2 - Low LTG3 - High	4 - VOLTAGE UNV - Universal (120/277V)	5 - DRIVER DB - Standard Dimming (0-10V) DB1% - 1% Dimming (0-10V) DB.1% - 0.1% Dimming (0-10V) DALI - DALI-2 Driver
6 - BEAM SPREAD SP - Spot FL - Flood WFL - Wide Flood XWFL - Extra Wide Flood	7 - FINISH BLK - Black (Standard) CC - Custom Color (provide RAL#)			

DATE	PROJECT	FIRM	TYPE
------	---------	------	------



FEATURES

- 4-Optic Adjustable Downlight Module with Pan and Tilt Capability
- Customizable Placement (Consult Factory; Drawing Required)
- Three Beam Spreads Available
- CRI 90+ Standard; R9>50
- Available In Custom Lengths Up To 8' (1 Foot Increments)
- 5 Year, 50,000 Hour Fixture Warranty
- 2700K, 3000K, 3500K & 4000K Color Temperatures Available

APPLICATIONS	Commercial Interiors, Galleries, Retail, Museums, Reception Areas, Hotels, Restaurants		
CONSTRUCTION	Die Cast and Formed Sheet Metal.	OPTICS	Custom Designed TIR Optic. Three Optional Beam Spreads.
WARRANTY	5 Year Limited Warranty (Covers Standard Components)	FINISH	Powder-Coated Black Standard. Optional White Powder-Coated Finish. Custom RAL Colors Available. Louver Black Only.
FIXTURE RATINGS & CERTIFICATIONS	Union Made ETL Listed	Made In The USA Damp Location Rated	
ELECTRICAL	0-10V Remote Driver (typically located in LS2 housing) Standard. Consult Factory per Specific Layout.		DRIVERS For Wiring Diagrams Click Here



LED SYSTEM INFORMATION

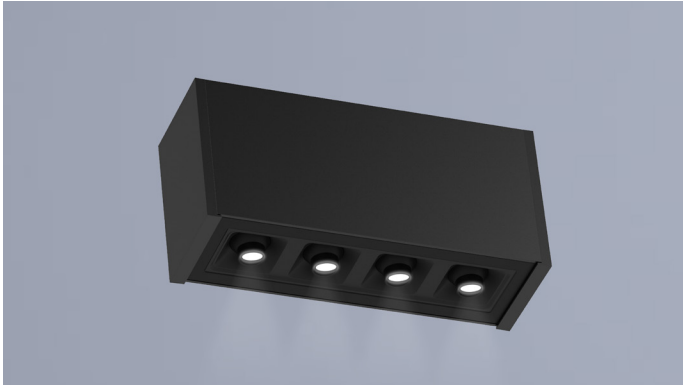
	Nominal System Watts	Nominal Delivered Lumens
Standard (LTG1)	12 W	728 lm
Low (LTG2)	9 W	540 lm
Low (LTG3)	16.75W	908 lm

NOTE: Based on 'SP' option in 3500K

ORDERING	1	2	3	4	5	6	7
-----------------	---	---	---	---	---	---	---


1 - FIXTURE ID DL ADJ	2 - COLOR TEMP 27 - 2700K/90 CRI 30 - 3000K/90 CRI 35 - 3500K/90 CRI 40 - 4000K/90 CRI	3 - LED SYSTEM LTG1 - Standard LTG2 - Low LTG3 - High	4 - VOLTAGE UNV - Universal (120/277V)	5 - DRIVER DB - Standard Dimming (0-10V) DB1% - 1% Dimming (0-10V) DB.1% - 0.1% Dimming (0-10V) DALI - DALI-2 Driver
6 - BEAM SPREAD SP - Spot FL - Flood WFL - Wide Flood XWFL - Extra Wide Flood	7 - FINISH BLK - Black (Standard) CC - Custom Color (provide RAL#)			

DATE	PROJECT	FIRM	TYPE
------	---------	------	------



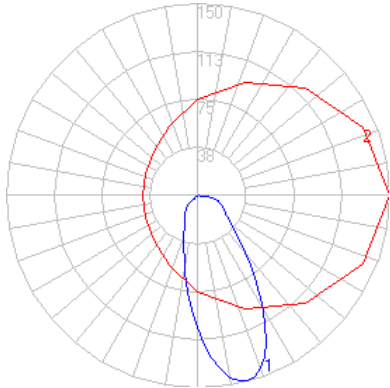
FEATURES

- Fixed 4-Optic Downlight Module with Specially Designed Wall Wash Optic
- Customizable Placement (Consult Factory; Drawing Required)
- CRI 90+ Standard; R9>50
- Glare Control Accessory Available
- Module is Dimmable Using a 0-10V Control Wired to the Magneto Track
- 2700K, 3000K, 3500K & 4000K Color Temperatures Available

APPLICATIONS	Commercial Interiors, Galleries, Retail, Museums, Reception Areas, Hotels, Restaurants		
CONSTRUCTION	Die Cast and Formed Sheet Metal.	OPTICS	Custom Tuned Optics to Provide 1:1 Wall Wash
WARRANTY	5 Year Limited Warranty (Covers Standard Components)	FINISH	Powder-Coated Black Standard. Optional White Powder-Coated Finish. Custom RAL Colors Available. Louver Black Only.
FIXTURE RATINGS & CERTIFICATIONS	Union Made ETL Listed	Made In The USA Damp Location Rated	
ELECTRICAL	0-10V Remote Driver (typically located in LS2 housing) Standard. Consult Factory per Specific Layout.		DRIVERS For Wiring Diagrams Click Here



LIGHT DISTRIBUTION



LED SYSTEM INFORMATION

	Nominal System Watts	Nominal Delivered Lumens
Standard (LTG1)	12 W	360 lm
Low (LTG2)	9 W	270 lm
Low (LTG3)	16.75W	505 lm

NOTE: Based on a 3500K luminaire

ORDERING

1	2	3	4	5	6
---	---	---	---	---	---

1 - FIXTURE ID DL WW	2 - COLOR TEMP 27 - 2700K/90 CRI 30 - 3000K/90 CRI 35 - 3500K/90 CRI 40 - 4000K/90 CRI	3 - LED SYSTEM LTG1 - Standard LTG2 - Low LTG3 - High	4 - VOLTAGE UNV - Universal (120/277V)	5 - DRIVER DB - Standard Dimming (0-10V) DB1% - 1% Dimming (0-10V) DB.1% - 0.1% Dimming (0-10V) DALI - DALI-2 Driver	6 - FINISH BLK - Black (Standard) CC - Custom Color (provide RAL#)
--------------------------------	---	---	--	---	---