

DATE

PROJECT

FIRM

TYPE



## FEATURES

- Linear Luminaire with Diamond-Shaped Profile
- Available Suspended and Ideal for Horizontal Wall/Ceiling or Wall/Wall Inner-Corner Applications
- Available In Made To Measure Lengths Accurate Up To 1/16"
- Patterns Available (See Page 2)
- Damp Location Rated
- CRI 90+ Standard; R9>50
- 5 Year, 50,000 Hour Fixture Warranty
- 2700K, 3000K, 3500K, 4000K & 5000K Color Temperatures Available
- Available with PoE

## APPLICATIONS

Offices, Lobbies, Retail Stores, Classrooms, Reception Areas & Corridors

## CONSTRUCTION

Extruded Aluminum Housing with Die Cast Ends. Formed Steel Gear Tray

## OPTICS

Extruded High Transmission Satin Acrylic Lens with No LED Imaging. Additional Optics Available

## WARRANTY

5 Year Limited Warranty (Covers Standard Components)

## FINISH

Standard Powder-Coated White. Custom RAL Colors Available

## FIXTURE RATINGS & CERTIFICATIONS

Union Made  
ETL Listed

Made In The USA  
Damp Location Rated



## DRIVERS & SENSORS

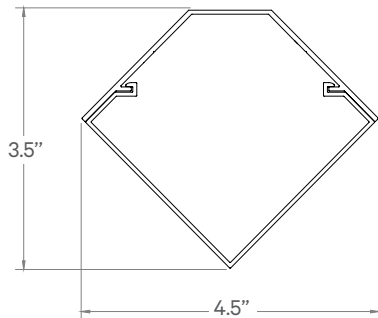


For Wiring Diagrams and Sensor Information Click [Here](#)

## ELECTRICAL

**Remote** Driver using 'Power Over Wire' System Which Eliminates Power Feed Cord By Combining The Aircraft Cable and Power Feed. Several Driver Options Available

## EXTRUSION DIMENSIONS



## LED SYSTEM INFORMATION

	Nominal System Watts	Nominal Delivered Lumens	Nominal Efficacy
Standard (LTG1)	7.25 W/ft	575 lm/ft	88 LPW
Low (LTG2)	5 W/ft	455 lm/ft	90 LPW
High (LTG3)	10 W/ft	741 lm/ft	77 LPW

Based on a 3500K luminaire using one driver. Custom outputs available; specify below.

## ORDERING

1 2 3 4 5 6 7 8 9 10 11

### 1 - FIXTURE ID

GEM

### 2 - LENGTH

2 - 2 ft  
4 - 4 ft  
8 - 8 ft  
X'-X" - Specify Length  
PAT - Pattern; See page 2 (Consult Factory)

### 3 - COLOR TEMP

27 - 2700K/90 CRI  
30 - 3000K/90 CRI  
35 - 3500K/90 CRI  
40 - 4000K/90 CRI  
50 - 5000K/90 CRI  
TW\* - Tunable White  
RGBW\*\* - RGB+3000K  
\*Must use DMX or TW10 Driver  
\*\*Must use DMX Driver

### 4 - LED SYSTEM

LTG1 - Standard  
LTG2 - Low  
LTG3 - High  
LTGC - Custom Output

### 5 - VOLTAGE

UNV - Universal (120/277V)

### 6 - DRIVER (remote)

DB - Standard Dimming (0-10V)  
DB1% - 1% Dimming (0-10V)  
DB.1% - 0.1% Dimming (0-10V)  
LTEA - Lutron 2-wire 1% Dimming (120V only)  
LDE1 - Lutron Digital EcoSystem  
LDE5 - 5 Series EcoSystem; 5% Dimming  
JA8 - JA8 Compliant 1% Dimming (0-10V)  
PoE - Power over Ethernet. Consult Factory for Compatibility  
DMX - For Color Tuning and RGBW (Remote)  
TW10 - Dual Channel, 0-10V For Color Tuning (CCT and Intensity Control)

### 7 - FINISH

W - White (Standard)  
BLK\* - Black  
CC\* - Custom Color (provide RAL number\*\*)  
CWF\* - Custom Wood Finish (provide color\*\*)

### 8 - MOUNTING

ACP - Power Over Air Craft Cable  
SM - Surface Mount

### 11 - OTHER OPTIONS

EM 120V - Emergency Pack  
EM 277V - Emergency Pack  
EMCKT - Emergency Circuit

\*White cord and canopy provided. Must specify for other requests.

\*\* (See [here](#) for finish options)

Updated: 03/25/2020

DATE

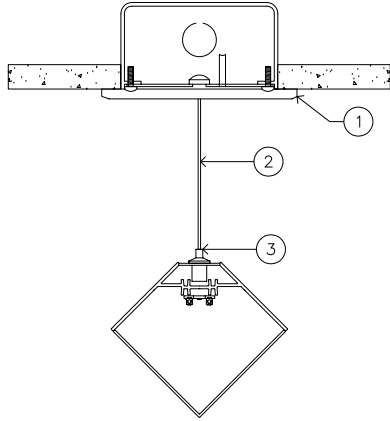
PROJECT

FIRM

TYPE

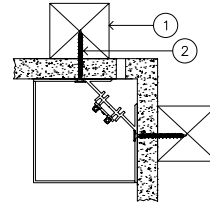
## MOUNTING OPTIONS

### ACP - Aircraft Cable Mounting (50") to Canopy

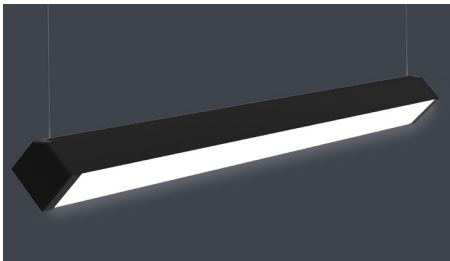


- 1 - 5" Round Canopy (Standard White Finish)
- 2 - Power over Air Craft Cable
- 3 - Gripper

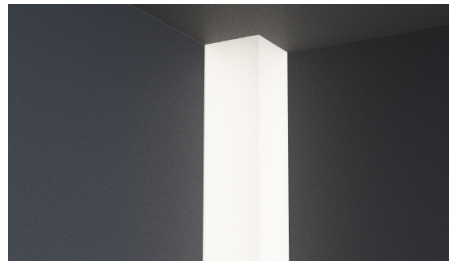
### SM - Surface Mount



- 1 - Secure Blocking (By Others)
- 2 - Drywall Screw (By Others)



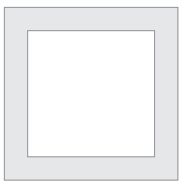
PENDANT



SURFACE

## PATTERNS

Patterns feature illuminated corners and angles. Must consult factory for custom corners and patterns

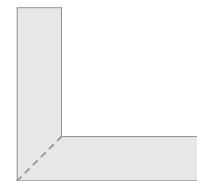


Square Patterns



Custom Angles

## LENS CUT



Mitered