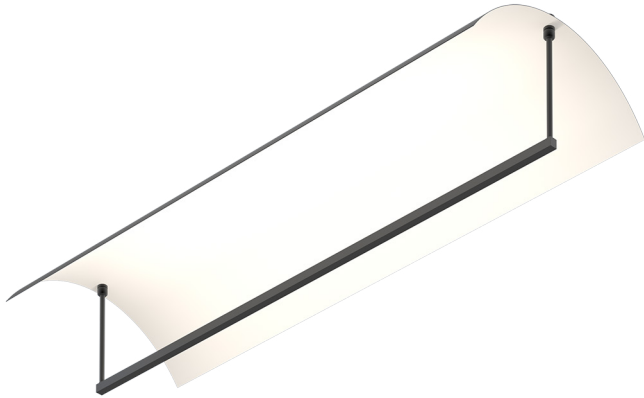


Parachute

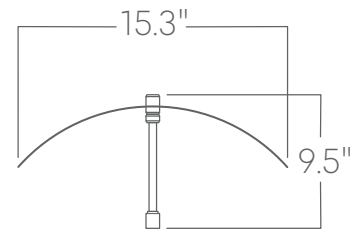


Our Performance Decorative luminaires offer a variety of decorative forms and sizes suitable for any modern space.

Features

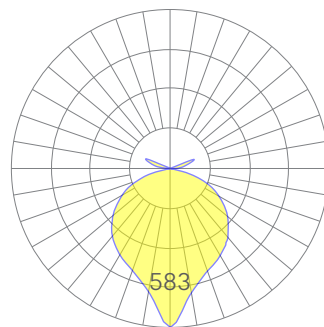
- Power Over Wire system eliminates power cord
- Configurable fixture in three styles
- Extruded recycled aluminum housing
- Specifiable color temperature. CRI > 90, R9 >50
- Specifiable dimmable drivers or PoE
- 5 Year, 50,000 hour warranty, damp location rated
- WELL Building Standard compatible [learn more](#)

Dimensions

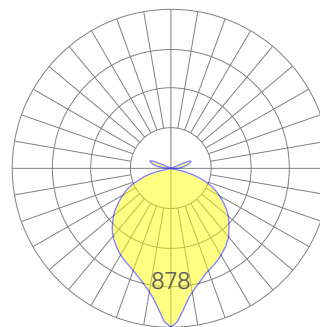


Standard configuration shown, others available, see pg. 2/3

Optics



low



medium

Representative distribution and peak candela. For other options see order information or IES files [here](#).

Parachute

Ordering Information

- - - - - - - - - - - -

1 2a 2b 3 4 5 6 7 8 9 10 11 12

Example: PARACHUTE - 4 - STD - 30K - MED - UNV - DB - BLK - ACP - SD - NA - NA - NA

Fixture ID <input type="text" value="1"/>	Length/Config. <input type="text" value="2a-"/> <input type="text" value="2b-"/>	Color Temperature <input type="text" value="3"/>	Output <input type="text" value="4"/>
PARACHUTE 2a - Fixture Length 4 4 ft 2b - Configuration STD Standard V V-Stem FC Full Cut-off Reflector	27 2700K/90 CRI 30 3000K/90 CRI 35 3500K/90 CRI 40 4000K/90 CRI	LOW Low output MED Medium output	
Voltage <input type="text" value="5"/>	Driver <input type="text" value="6"/>	Finish <input type="text" value="7"/>	Mounting <input type="text" value="8"/>
UNV Universal (120/277V) 347V¹ 347V	DB Standard 0-10V 1% DB.1% 0-10V 0.1% ELV¹ Reverse Phase 1% (120V only) TRI¹ Forward phase (120V only) LDE1 Lutron Digital EcoSystem DALI DALI-2 Driver PoE Power over Ethernet <small>All drivers remote ¹For compatible dimmers, click here.</small>	W White BLK Black CC¹ Custom Color <small>¹Custom Color. See finish options here.</small>	ACP Power Over Aircraft Cable <small>White canopy provided. Must specify other requests.</small>
Optics <input type="text" value="9"/>	Sensors/Controls <input type="text" value="10"/>	Circuit <input type="text" value="11"/>	Options <input type="text" value="12"/>
SD Standard Diffuser	NA None	NA None EMCKT Emergency Circuit	NA None

Performance

Output ¹	Watts	Lumens
Low	5.5	385
Medium	8	560

¹Based on a typically configured 90 CRI, 3500K luminaire using one driver.

Custom outputs available. Please consult factory.
For 4000K multiply by 1.05, for 3000K 0.96, for 2700K, 0.92.

Technical Information



click [here](#) or scan QR code

Wiring diagrams, PoE and sensor details

Modification date: November, 2022

Page 2 of 3

Parachute

Drivers & Electrical

Our Power Over Wire system delivers power to the luminaire via suspension cables, eliminating a separate power feed. Drivers are housed in factory supplied remote enclosures! All drivers are dimmable.

¹See order information for more details.

Emergency Back-Up

Emergency circuits for use with building generators are available.

PoE (Power over Ethernet)

Compatible with virtually all PoE systems including Molex Coresync, Igor, Smartengine, Platformatics, and NuLED SPICEbox. Consult Factory for systems not listed, See [here](#) for more info.

Weight

20 lbs

Mounting

Optics

Extruded satin acrylic lenses provide excellent diffusion, high transmission, and no LED imaging.

Construction

Housings are extruded premium, recycled aluminum.

Finishes

All luminaires are finished in high quality polyester powder coating. Our standard color is black.

