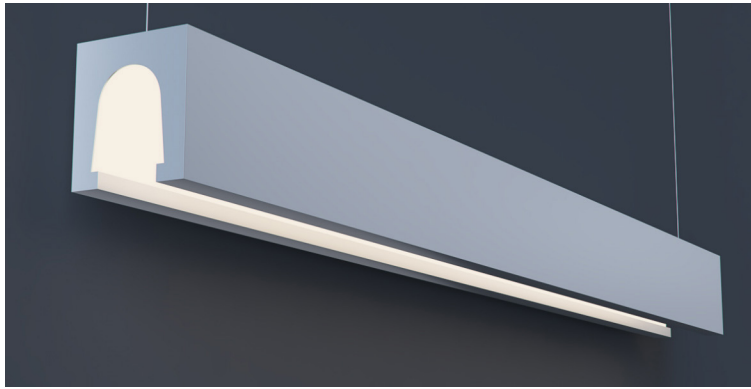


DATE

PROJECT

FIRM

TYPE



## FEATURES

- Available In Made To Measure Lengths Accurate Up To 2"
- Damp Location Rated
- CRI 90+ Standard; R9>50
- 5 Year, 50,000 Hour Fixture Warranty
- 2700K, 3000K, 3500K & 4000K Color Temperatures Available
- Available with PoE- [See More](#)

**APPLICATIONS** Offices, Lobbies, Retail Stores, Classrooms, Reception Areas, & Corridors

**FINISH** Standard Powder-Coated White. Custom RAL Colors Available

**CONSTRUCTION** Extruded Aluminum Housing with Steel End Caps and Reflector.

**OPTICS** Concealed LED Source Uplighting with Optically Coated White Reflector and No LED Imaging.



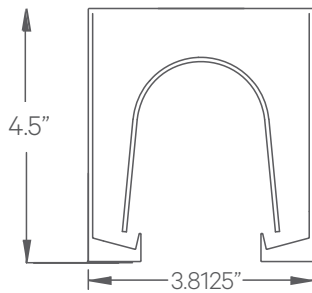
## DRIVERS, SENSORS, & POE

For Wiring Diagrams, POE, and Sensor Information Click [Here](#)



**ELECTRICAL** Remote Driver with 0-10V, 1% Dimming Standard. Several Driver Options Available

## EXTRUSION DIMENSIONS



## LED SYSTEM INFORMATION

	Nominal System Watts	Nominal Delivered Lumens
Standard (LTG1)	7 W/ft	350 lm/ft
Low (LTG2)	5 W/ft	262 lm/ft
High (LTG3)	10 W/ft	500 lm/ft

Based on a 90CRI, 3500K luminaire using one driver. Custom outputs available; specify below.

## ORDERING

1

2

3

4

5

6

7

8

9

### 1 - FIXTURE ID

**U SQUARE**

### 2 - LENGTH

**2** - 2 ft  
**4** - 4 ft  
**8** - 8 ft  
**X'-X"** - Specify Length (2" Increments)  
**PAT** - Pattern (Consult Factory)

### 3 - COLOR TEMP

**27** - 2700K/90 CRI  
**30** - 3000K/90 CRI  
**35** - 3500K/90 CRI  
**40** - 4000K/90 CRI

### 4 - LED SYSTEM

**LTG1** - Standard  
**LTG2** - Low  
**LTG3** - High  
**LTGC** - Custom Output

### 5 - VOLTAGE

**UNV** - Universal (120/277V)  
**347V\*** - 347V  
 \*Must use DB Driver

### 6 - DRIVER (Remote)

**DB** - Standard 1% Dimming (0-10V)  
**DB.1%** - 0.1% Dimming (0-10V)  
**ELV-TRI** - 2-wire 1% Dimming (120V only) ELV and TRIAC Compatible  
**LDE1** - Lutron Digital EcoSystem  
**LDE5** - 5 Series EcoSystem; 5% Dimming  
**DALI** - DALI-2 Driver  
**PoE** - Power over Ethernet. Consult Factory for Compatibility

### 7 - FINISH

**W** - White (Standard)  
**BLK\*** - Black  
**CC\*** - Custom Color (provide RAL#)

### 8 - MOUNTING

**AC** - Air Craft Cable (50")

### 9 - OTHER OPTIONS

**10W EM 120V** - Emergency Pack (Remote)  
**10W EM 277V** - Emergency Pack (Remote)  
**EMCKT** - Emergency Circuit

\*White canopy provided. Must specify for other requests.

DATE

PROJECT

FIRM

TYPE

### PATTERNS

Patterns feature illuminated corners and x-patterns. **Must consult factory..**



Square Patterns



X Patterns