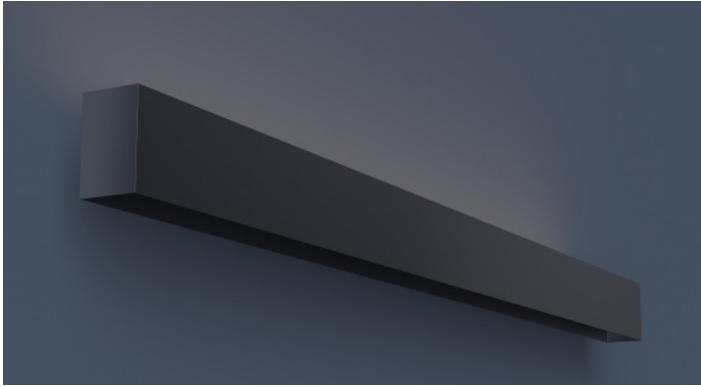




## MAGNETO Track System

MAGNETO is an innovative and dynamic track system designed for ease and flexibility. Featuring snap-in magnetic mounting that allows you to rearrange several different modules. Fully customizable to suit your specific needs.

DATE \_\_\_\_\_ PROJECT \_\_\_\_\_ FIRM \_\_\_\_\_ TYPE \_\_\_\_\_



Linear low voltage configurable track system with the flexibility of magnetically mounted modules for ease of on-site adjustability and install. Configure in patterns or runs to meet design requirements. Complete with optional indirect lighting.

### FEATURES

- Two Circuits to Power MagNeto Modules
- Optional Additional Uplight Circuit
- CRI 90+ Standard; R9>50
- Available In Made To Measure Lengths Accurate Up To 1/16"
- Patterns Available (See Page 2)
- Track Circuits Are Dimmable To 1% With 0-10V Controls. Uplight Is 10% Standard

**APPLICATIONS** Commercial Interiors, Galleries, Retail, Museums, Reception Areas, Hotels, Restaurants

**CONSTRUCTION** Extruded Housing with Steel End Plates **OPTICS** Optional Uplight with Frosted Lens

**WARRANTY** 5 Year Limited Warranty (Covers Standard Components) **FINISH** Powder-Coated Black Standard. Optional White Powder-Coated Finish. Custom RAL Colors Available

**FIXTURE RATINGS & CERTIFICATIONS** Union Made ETL Listed Made In The USA Damp Location Rated



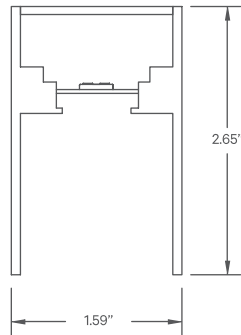
### DRIVERS

For Wiring Diagrams Click [Here](#)



**ELECTRICAL** Uplight and dual circuit track. Remote constant voltage driver with integral 1% 0-10V dimming for track. Remote constant current driver for uplight. Recommended driver load is 85% of max. 20ft maximum remote driver distance from feed. Track must be re-fed every 30ft or when driver max is reached (whichever comes first).

### EXTRUSION DIMENSIONS



### LED SYSTEM INFORMATION (FOR OPTIONAL UPLIGHT ONLY)

	Nominal System Watts	Nominal Delivered Lumens
Standard (LTG1)	5.25 W/ft	450 lm/ft
Low (LTG2)	3.5 W/ft	300 lm/ft
High (LTG3)	7.25 W/ft	600 lm/ft

Based on a 3500K luminaire using one driver. Custom outputs available; specify below.



- |   |  |  |  |  |  |
|---|--|--|--|--|--|
| <p><b>1 - FIXTURE ID</b><br/>MAG - TRK</p>  | <p><b>2 - LENGTH</b><br/>2 - 2 ft<br/>4 - 4 ft<br/>8 - 8 ft<br/>X'-X" - Specify Length<br/>PAT - Pattern<br/>(Consult Factory)</p> | <p><b>3 - COMPONENT</b><br/>UP - Uplight<br/>NA - No Uplight (Track Only)</p>                          | <p><b>4 - COLOR TEMP</b><br/>27 - 2700K/90 CRI<br/>30 - 3000K/90 CRI<br/>35 - 3500K/90 CRI<br/>40 - 4000K/90 CRI</p> | <p><b>5 - LED SYSTEM (Uplight)</b><br/>LTG1 - Standard<br/>LTG2 - Low<br/>LTG3 - High<br/>LTGC - Custom Output</p> | <p><b>6 - VOLTAGE</b><br/>UNV - Universal<br/>(120/277V)</p> |
| <p><b>7 - DRIVER (Uplight)</b><br/>DB - Standard Dimming (0-10V)<br/>DB1% - 1% Dimming (0-10V)<br/>DB.1% - 0.1% Dimming (0-10V)</p> | <p><b>8 - DRIVER CKT1 (Track)</b><br/>DR30 - 30W Driver<br/>DR60 - 60W Driver<br/>DR96 - 96W Driver</p>                            | <p><b>9 - DRIVER CK2 (Track)</b><br/>DR30 - 30W Driver<br/>DR60 - 60W Driver<br/>DR96 - 96W Driver</p> | <p><b>10 - FINISH</b><br/>BLK* - Black (Standard)<br/>CC - Custom Color<br/>(provide RAL#)</p>                       | <p><b>11 - MOUNTING</b><br/>AC - Air Craft Cable (50")</p>   |  |

\*Interior finish comes standard black, custom colors available. Consult factory

DATE

PROJECT

FIRM

TYPE

## PATTERNS

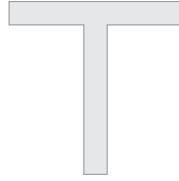
Patterns feature illuminated corners and angles. **Must consult factory for custom corners and patterns.**



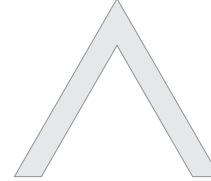
Square Patterns



X Patterns



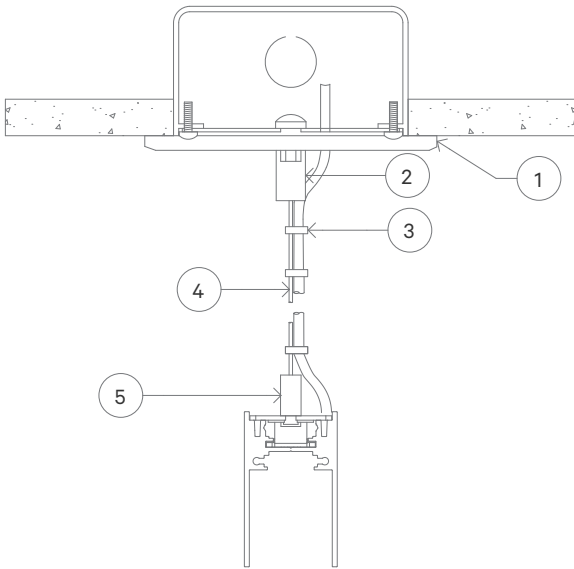
T Patterns



Custom Angles

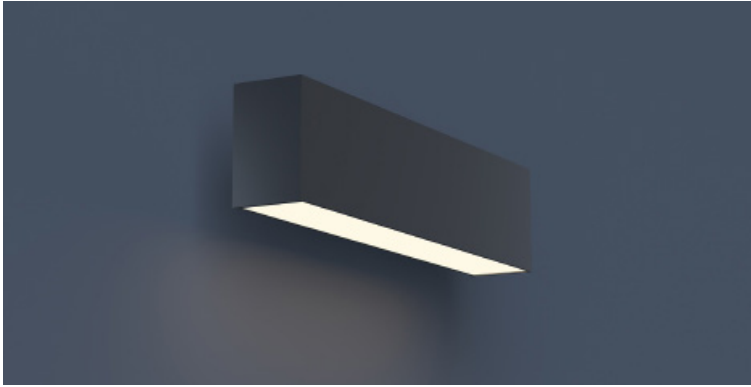
## MOUNTING OPTIONS

AC - Air Craft Cable (50")



- 1 - Canopy
- 2 - Canopy Retainer
- 3 - SJT Cord
- 4 - Air Craft Cable
- 5 - Gripper


DATE	PROJECT	FIRM	TYPE
------	---------	------	------



Magneto linear module. Connects to Magneto low voltage track to provide linear downlighting. Optional **BLACK OPTIC** that allows the unilluminated fixture to seamlessly blend in to dark environments and delivers full illumination when switched on.

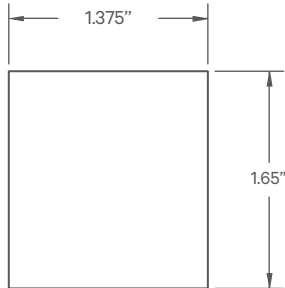
### FEATURES

- Magnetically Held Fixture Designed to Be Easily Repositioned in Magneto Track On Site
- Optional **BLACK OPTIC**
- Available in Lengths Up To 8' (6" Increments)
- CRI 90+ Standard; R9>50
- 5 Year, 50,000 Hour Fixture Warranty
- 2700K, 3000K, 3500K & 4000K Color Temperatures Available

<b>APPLICATIONS</b>	Commercial Interiors, Galleries, Retail, Museums, Reception Areas, Hotels, Restaurants		
<b>CONSTRUCTION</b>	Extruded and Cast Aluminum Components	<b>OPTICS</b>	Extruded High Transmission Satin Acrylic Lens with No LED Imaging. <b>BLACK OPTIC</b> Optional.
<b>WARRANTY</b>	5 Year Limited Warranty (Covers Standard Components)	<b>FINISH</b>	Powder-Coated Black Standard. Optional White Powder-Coated Finish. Custom RAL Colors Available
<b>FIXTURE RATINGS &amp; CERTIFICATIONS</b>	Union Made ETL Listed	Made In The USA Damp Location Rated	
<b>ELECTRICAL</b>	Powered by Magneto Track System. 0-10V Dimmable. 'Flip' Fixture in Track to Select Circuit		<b>DRIVERS</b>  For Wiring Diagrams Click <a href="#">Here</a>



### EXTRUSION DIMENSIONS



### LED SYSTEM INFORMATION

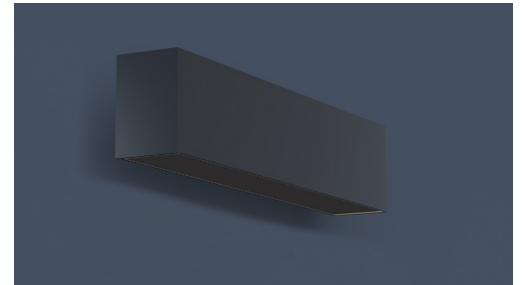
	Nominal System Watts	Nominal Delivered Lumens
Standard (LTG1)	8 W/ft	500 lm/ft
Low (LTG2)	4.5 W/ft	280 lm/ft

NOTE: Based on a 3500K luminaire

**ORDERING**

1	2	3	4	5	6	7
---	---	---	---	---	---	---

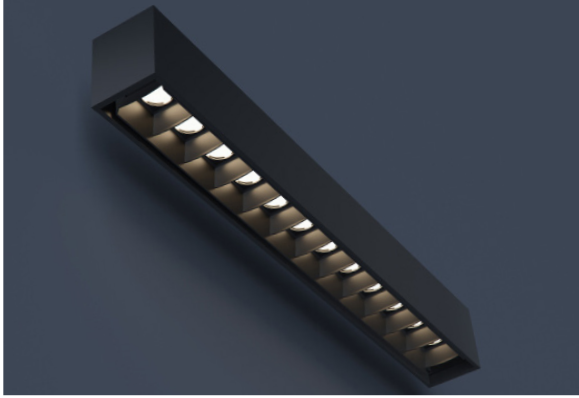
<b>1 - FIXTURE ID</b> MAG - LIN	<b>2 - LENGTH</b> 2 - 2 ft 4 - 4 ft 8 - 8 ft X'-X" - Specify Length (Maximum Length 8ft, Specify to the Nearest 6")	<b>3 - COLOR TEMP</b> 27 - 2700K/90 CRI 30 - 3000K/90 CRI 35 - 3500K/90 CRI 40 - 4000K/90 CRI	<b>4 - LED SYSTEM</b> LTG1 - Standard LTG2 - Low	<b>5 - VOLTAGE</b> UNV - Universal (120/277V)
<b>6 - FINISH</b> BLK - Black (Standard) CC - Custom Color (provide RAL#)	<b>7 - OPTICS</b> SD - Standard Diffuser BKO™ - <b>BLACK OPTIC</b>			



Shown with optional **BLACK OPTIC**

Updated: 06/3/2019


DATE	PROJECT	FIRM	TYPE
------	---------	------	------



Magneto linear baffle module. Connects to Magneto low voltage track to provide linear downlighting.

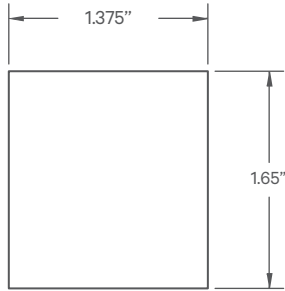
### FEATURES

- Magnetically Held Fixture Designed to Be Easily Repositioned in Magneto Track On Site
- Specifiable Optic Packages
- CRI 90+ Standard; R9>50
- Available In Custom Lengths Up To 8' (1 Foot Increments)
- 5 Year, 50,000 Hour Fixture Warranty
- 2700K, 3000K, 3500K & 4000K Color Temperatures Available

<b>APPLICATIONS</b>	Commercial Interiors, Galleries, Retail, Museums, Reception Areas, Hotels, Restaurants		
<b>CONSTRUCTION</b>	Extruded and Cast Aluminum Components. Injection Molded Poly-Carbonate Baffle	<b>OPTICS</b>	Optic Per LED; Various Beam Spreads Available. See Below
<b>WARRANTY</b>	5 Year Limited Warranty (Covers Standard Components)	<b>FINISH</b>	Powder-Coated Black Standard. Custom RAL Colors Available for Housing Only (Baffle Only Available in Black)
<b>FIXTURE RATINGS &amp; CERTIFICATIONS</b>	Union Made ETL Listed	Made In The USA Damp Location Rated	 <b>DRIVERS</b> For Wiring Diagrams Click <a href="#">Here</a>
<b>ELECTRICAL</b>	Powered by Magneto Track System. 0-10V Dimmable. 'Flip' Fixture in Track to Select Circuit		



### EXTRUSION DIMENSIONS



### LED SYSTEM INFORMATION

	System Watts	Delivered Lumens	Efficacy
Standard (LTG1)	3 W/ft	303 lm/ft	110 LPW

\*Based on 'WFL' option

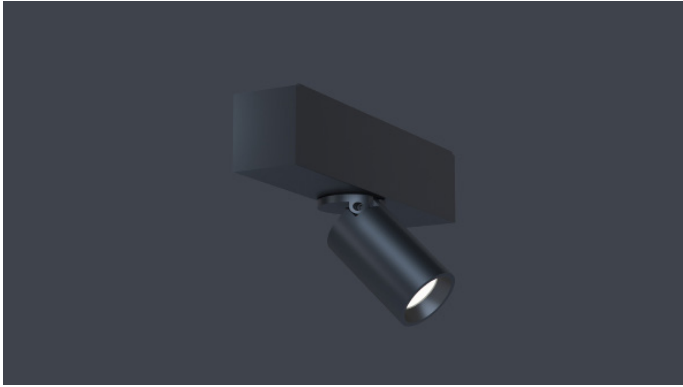
### BEAM SPREAD INFORMATION

	SP	FL	WFL
CBCP	5816	4122	3116



<b>1 - FIXTURE ID</b> MAG - BAF	<b>2 - LENGTH</b> 1' - 1 ft 2' - 2 ft 3' - 3 ft 4' - 4 ft 6' - 6 ft 8' - 8 ft X' - Specify Length (To the nearest 1ft)	<b>3 - COLOR TEMP</b> 27 - 2700K/90 CRI 30 - 3000K/90 CRI 35 - 3500K/90 CRI 40 - 4000K/90 CRI	<b>4 - LED SYSTEM</b> LTG1 - Standard	<b>5 - VOLTAGE</b> UNV - Universal (120/277V)	<b>6 - FINISH</b> BLK - Black (Standard) CC - Custom Color (provide RAL#)
<b>7 - FINISH (Baffle)</b> BLK - Black	<b>8 - BEAM SPREAD</b> SP - 20° Beam; (Spot) FL - 26° Beam Spread; (Flood) WFL - 32° Beam Spread; (Wide Flood)				


DATE	PROJECT	FIRM	TYPE
------	---------	------	------



Small, magneto accent module. Connects to Magneto low voltage track to provide accent lighting.

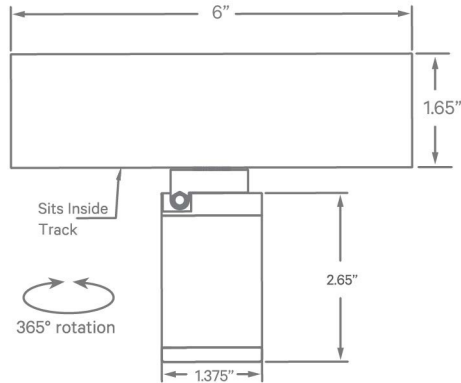
### FEATURES

- Magnetically Held Fixture Designed to Be Easily Repositioned in Magneto Track On Site
- Three Beam Spreads Available
- CRI 90+ Standard; R9>50
- Glare Control Accessory Available
- Module is Dimmable Using a 0-10V Control Wired to the Magneto Track
- 2700K, 3000K, 3500K & 4000K Color Temperatures Available

<b>APPLICATIONS</b>	Commercial Interiors, Galleries, Retail, Museums, Reception Areas, Hotels, Restaurants		
<b>CONSTRUCTION</b>	Extruded and Cast Aluminum Components	<b>OPTICS</b>	Field Changeable Optic; Beam Angle of 24°, 27°, and 30° Available. Optional Hex Louver Available
<b>WARRANTY</b>	5 Year Limited Warranty (Covers Standard Components)	<b>FINISH</b>	Powder-Coated Black Standard. Optional White Powder-Coated Finish. Custom RAL Colors Available
<b>FIXTURE RATINGS &amp; CERTIFICATIONS</b>	Union Made ETL Listed	Made In The USA Damp Location Rated	 <b>DRIVERS</b> For Wiring Diagrams <a href="#">Click Here</a>
<b>ELECTRICAL</b>	Powered by Magneto Track System. 0-10V Dimmable. 'Flip' Fixture in Track to Select Circuit		



### EXTRUSION DIMENSIONS



### LED SYSTEM INFORMATION

	Nominal System Watts	Nominal Delivered Lumens
SM	5 W	328 lm

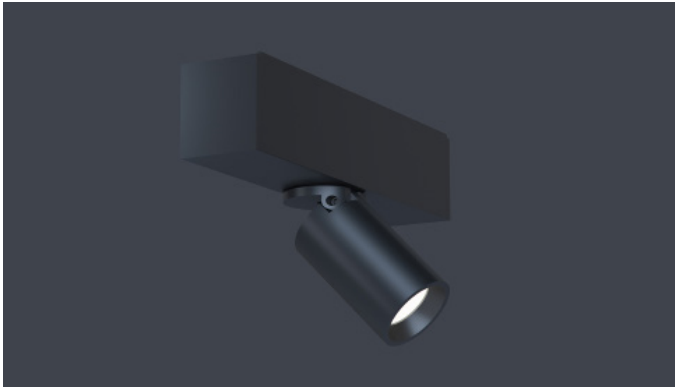
\*Based on 'WFL' option in 3500K

### ORDERING



<b>1 - FIXTURE ID</b> MAG - SPT	<b>2 - SIZE</b> SM	<b>3 - COLOR TEMP</b> 27 - 2700K/90 CRI 30 - 3000K/90 CRI 35 - 3500K/90 CRI 40 - 4000K/90 CRI	<b>4 - LED SYSTEM</b> LTG1 - Standard	<b>5 - VOLTAGE</b> UNV - Universal (120/277V)	<b>6 - FINISH</b> BLK - Black (Standard) CC - Custom Color (provide RAL#)
<b>7 - BEAM SPREAD</b> SP - 24° Beam; 1754 CBCP FL - 27° Beam Spread; 1700 CBCP WFL - 30° Beam Spread; 994 CBCP	<b>8 - OPTIONAL ACCESSORIES</b> HEX - Hex Louver				

DATE	PROJECT	FIRM	TYPE
------	---------	------	------



Magneto accent module. Connects to Magneto low voltage track to provide accent lighting.

### FEATURES

- Magnetically Held Fixture Designed to Be Easily Repositioned in Magneto Track On Site
- Three Beam Spreads Available
- CRI 90+ Standard; R9>50
- Glare Control Accessory Available
- Module is Dimmable Using a 0-10V Control Wired to the Magneto Track
- 2700K, 3000K, 3500K & 4000K Color Temperatures Available

**APPLICATIONS** Commercial Interiors, Galleries, Retail, Museums, Reception Areas, Hotels, Restaurants

**CONSTRUCTION** Extruded and Cast Aluminum Components | **OPTICS** Field Changeable Optic; Beam Angle of 15°, 38°, and 60° Available.

**WARRANTY** 5 Year Limited Warranty (Covers Standard Components) | **FINISH** Powder-Coated Black Standard. Optional White Powder-Coated Finish. Custom RAL Colors Available

**FIXTURE RATINGS & CERTIFICATIONS** Union Made ETL Listed | Made In The USA Damp Location Rated

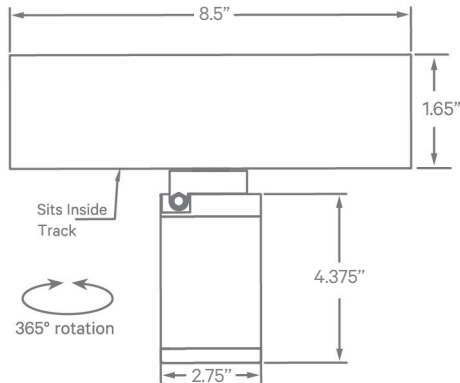


**DRIVERS**  
For Wiring Diagrams Click [Here](#)



**ELECTRICAL** Powered by Magneto Track System. 0-10V Dimmable. 'Flip' Fixture in Track to Select Circuit

### EXTRUSION DIMENSIONS



### LED SYSTEM INFORMATION

	Nominal System Watts	Nominal Delivered Lumens
MED	8 W	615 lm

\*Based on 'WFL' option in 3500K

**ORDERING**

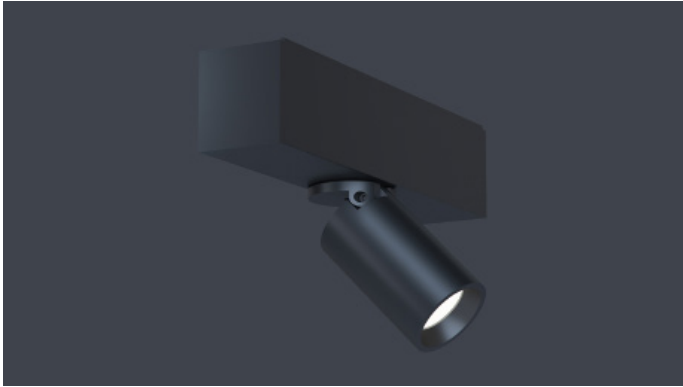
1	2	3	4	5	6	7
---	---	---	---	---	---	---

- |                                    |                        |   |  |  |  |
|------------------------------------|------------------------|---|--|--|--|
| <b>1 - FIXTURE ID</b><br>MAG - SPT | <b>2 - SIZE</b><br>MED | <b>3 - COLOR TEMP</b><br>30 - 3000K/90 CRI<br>35 - 3500K/90 CRI | <b>4 - LED SYSTEM</b><br>LTG1 - Standard | <b>5 - VOLTAGE</b><br>UNV - Universal (120/277V) | <b>6 - FINISH</b><br>BLK - Black (Standard)<br>CC* - Custom Color (provide RAL#)<br><small>*Additional lead time</small> |
|------------------------------------|------------------------|---|--|--|--|

### 7 - BEAM SPREAD

- SP - 15° Beam
- FL - 38° Beam Spread
- WFL - 60° Beam Spread


DATE	PROJECT	FIRM	TYPE
------	---------	------	------



Magneto accent module. Connects to Magneto low voltage track to provide accent lighting.

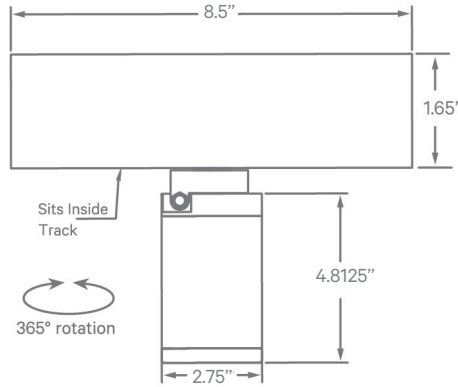
### FEATURES

- Magnetically Held Fixture Designed to Be Easily Repositioned in Magneto Track On Site
- Three Beam Spreads Available
- CRI 90+ Standard; R9>50
- Glare Control Accessory Available
- Module is Dimmable Using a 0-10V Control Wired to the Magneto Track
- 2700K, 3000K, 3500K & 4000K Color Temperatures Available

<b>APPLICATIONS</b>	Commercial Interiors, Galleries, Retail, Museums, Reception Areas, Hotels, Restaurants		
<b>CONSTRUCTION</b>	Extruded and Cast Aluminum Components	<b>OPTICS</b>	Field Changeable Optic; Beam Angle of 15°, 38°, and 60° Available.
<b>WARRANTY</b>	5 Year Limited Warranty (Covers Standard Components)	<b>FINISH</b>	Powder-Coated Black Standard. Optional White Powder-Coated Finish. Custom RAL Colors Available
<b>FIXTURE RATINGS &amp; CERTIFICATIONS</b>	Union Made ETL Listed	Made In The USA Damp Location Rated	 <b>DRIVERS</b> For Wiring Diagrams <a href="#">Click Here</a>
<b>ELECTRICAL</b>	Powered by Magneto Track System. 0-10V Dimmable. 'Flip' Fixture in Track to Select Circuit		



### EXTRUSION DIMENSIONS



### LED SYSTEM INFORMATION

	Nominal System Watts	Nominal Delivered Lumens
LRG	15 W	1460 lm

### ORDERING



<b>1 - FIXTURE ID</b> MAG - SPT	<b>2 - SIZE</b> LRG	<b>3 - COLOR TEMP</b> 30 - 3000K/90 CRI 35 - 3500K/90 CRI	<b>4 - LED SYSTEM</b> LTG1 - Standard	<b>5 - VOLTAGE</b> UNV - Universal (120/277V)	<b>6 - FINISH</b> BLK - Black (Standard) CC* - Custom Color (provide RAL#) <small>*Additional lead time</small>
------------------------------------	------------------------	---	--	--	--

### 7 - BEAM SPREAD

- SP - 15° Beam
- FL - 24° Beam Spread
- WFL - 60° Beam Spread