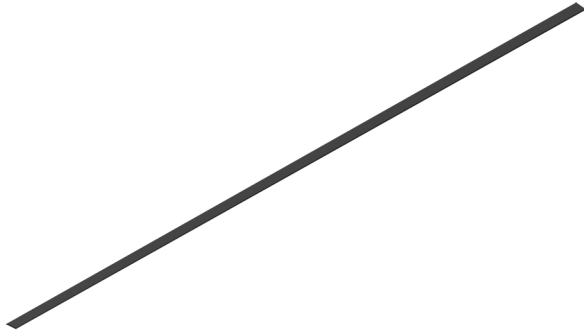


# Rush Black Optic recessed

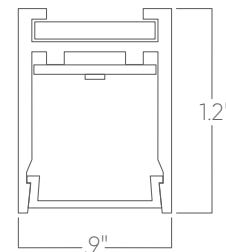


The Black Optic Series of architectural luminaires seamlessly blends into dark surroundings. Custom lengths and patterns are tailored to suit any modern space.

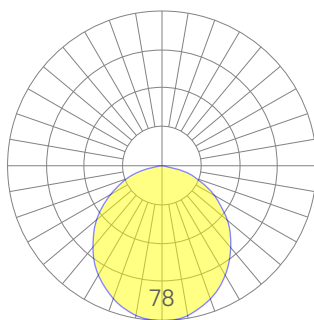
## Features

- Extruded, recycled aluminum housing
- Aluminum core LED boards, specifiable output
- Specifiable color temperature. CRI > 90, R9 >50
- Custom lengths, welded patterns, and finishes available
- Integral specifiable dimmable drivers or PoE
- 5 Year, 50,000 hour warranty
- WELL Building Standard compatible [learn more](#)

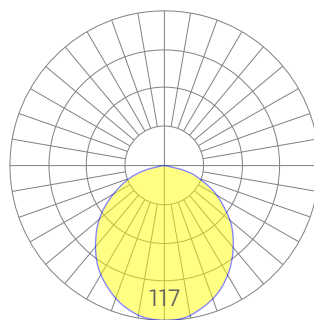
## Dimensions



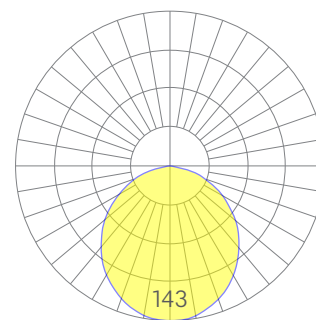
## Optics



low



medium



high

Representative distribution and peak candela. For other options see order information or IES files [here](#).

# Rush Black Optic recessed

## Ordering Information



Example: RUSH BKO REC- 8 - 35 - LOW - UNV - DB - W - AC - BKO - CCS - DAYCKT - NA

Fixture ID	1	Length	2	Color Temperature	3	Output	4
<b>RUSH BKO REC</b>		<b>2</b> 2 ft <b>4</b> 4 ft <b>8</b> 8 ft <b>X'X"</b> Specify Length		<b>27</b> 2700K/90 CRI <b>30</b> 3000K/90 CRI <b>35</b> 3500K/90 CRI <b>40</b> 4000K/90 CRI		<b>LOW</b> Low output <b>MED</b> Medium output <b>HIGH</b> High output <b>CUST</b> Custom output <sup>1</sup>	
<small><sup>1</sup>Custom lengths available in 1" increments</small>							
<small><sup>2</sup>consult factory</small>							
Voltage	5	Driver	6	Finish	7	Mounting	8
<b>UNV</b> Universal (120/277V) <b>347V</b> 347V		<b>DB</b> Standard 0-10V 1% <b>DB.1%</b> 0-10V 0.1% <b>ELV</b> 2-wire 1% (120V only) <b>TRI</b> Forward phase (120V only) <b>LDE1</b> Lutron Digital EcoSystem <b>DALI</b> DALI-2 Driver <b>PoE</b> Power over ethernet. <b>TW10</b> Dual channel, 0-10V for tunable white. <b>WD10</b> 0-10V Warm Dim <b>PSQ</b> Lutron T-Series 2-channel 1% for tunable white <b>DMX</b> DMX512		<b>W</b> White <b>BLK</b> Black <b>CC</b> Custom Color <b>CWF</b> Custom Wood Finish		<b>T</b> 9/16" Tee Grid <b>T15</b> 15/16" Tee Grid <b>SG</b> Slot Grid/Interlude <b>F</b> Flange <b>NT</b> Mud-in Flange <b>PM-X</b> Perimeter Mount <b>MW</b> Millwork	
<small><sup>1</sup>Must use DB Driver</small>							
<small><sup>1</sup>Set to default address 001.RDM capable. Contact us for other addressing needs.</small>							
<small><sup>2</sup>Custom Color. See finish options here.</small>							
<small>White SJ cord and canopy provided, for other requests, see section 12 to specify.</small>							
<small><sup>1</sup>X denotes mounting type on opposite side of wall (eg PM-NT)</small>							
<small><sup>2</sup>Consult Factory</small>							
Optics	9	Sensors/Controls	10	Circuit	11	Options	12
<b>BKO</b> Black Optic		<b>NA</b> None <b>EIS</b> Enlighted sensor <b>WISM</b> Wattstopper occupancy sensor <b>WISD</b> Wattstopper daylight sensor <b>ACM</b> Acuity nLight module only <b>ACS</b> Acuity nLight sensor <b>CCS</b> Casambi module		<b>NA</b> None <b>EMCKT</b> Emergency Circuit <b>DAYCKT</b> Daylight Circuit		<b>NA</b> None <b>CAN-X</b> Canopy + color <b>SJ-X</b> SJ Cord + color	
<small>Consult factory for other options.</small>							
<small><sup>1</sup>White SJ cord and canopy provided, use above nomenclature for other requests.</small>							
<small><sup>2</sup>See finish options here.</small>							

## Performance

Output <sup>1</sup>	Watts/ft	Lumens/ft
Low	4	53
Medium	5	79
High	7	100

<sup>1</sup>Based on a typically configured 90 CRI, 3500K luminaire using one driver.

Custom outputs available. Please consult factory.  
For 4000K multiply by 1.05; for 3000K 0.96; for 2700K, 0.92

## Technical Information



Click [here](#) or scan QR code

Wiring diagrams, PoE and sensor details

Modification date: March,2022

Page 2 of 4

# Rush Black Optic recessed

## Drivers & Electrical

## Sensors & Controls

Sensors are installed on an aluminum plate adjacent to the luminaire lens. Coronet remains agnostic in our approach to sensors and control systems; our fixtures are compatible with most systems offered.

## Emergency Back-Up

Emergency circuits for use with building generators available

## PoE (Power over Ethernet)

Compatible with virtually all PoE systems including Molex Coresync, Igor, Smartengine, Platformatics, and NuLED SPICEbox. Consult Factory for systems not listed, See [here](#) for more info.

## Finishes

All luminaires are finished in high quality polyester powder coating. Our standard color is white. Any RAL color may be specified.

## Weight

5 lbs per foot

## Patterns

Featuring illuminated welded corners and angles. Consult factory for custom designs.

## Optics

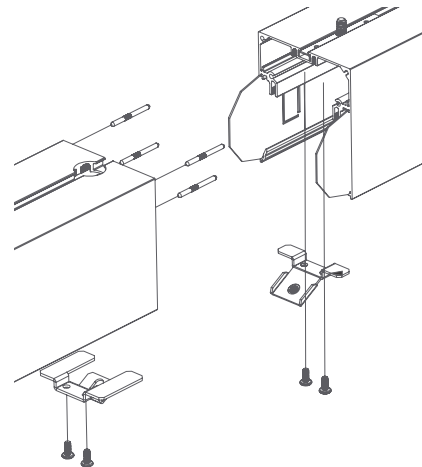
Room facing lens is black when unilluminated, seamlessly blending into dark environments. Uplight is available for some models.

## Construction

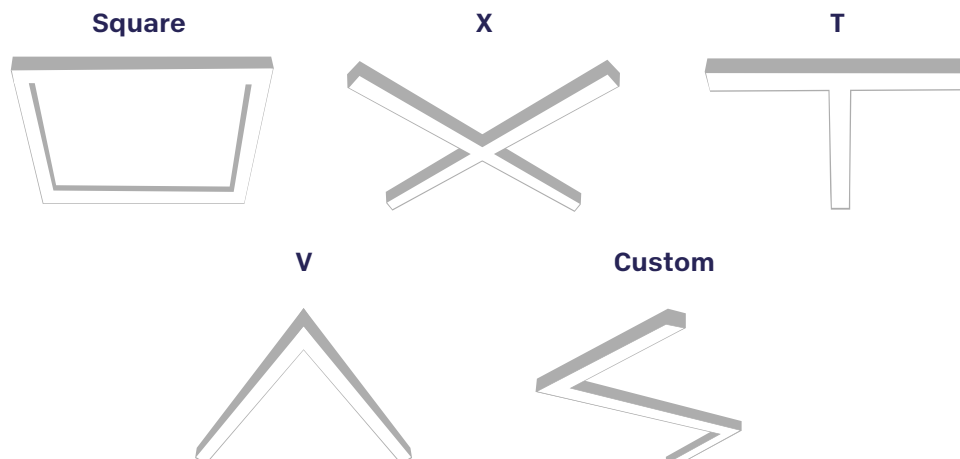
Housings are extruded premium, recycled aluminum. Individual fixtures are available up to 12' long and may be specified as nominal or precision lengths. Precision lengths are supplied within 1/8" tolerance.

## Joined Runs

Runs of any length may be specified and are comprised of multiple, factory-engineered, joined sections. Individually specified luminaires are not field joinable.



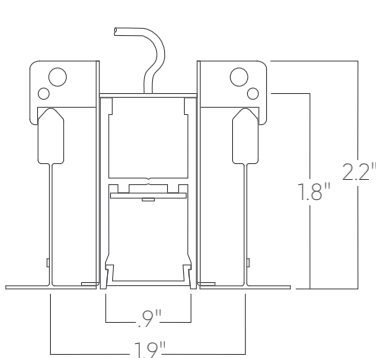
Representative joinery. For product specific details see installation guides or submittal drawings.



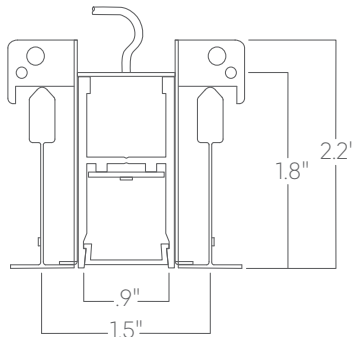
# Rush Black Optic recessed

## Mounting Options

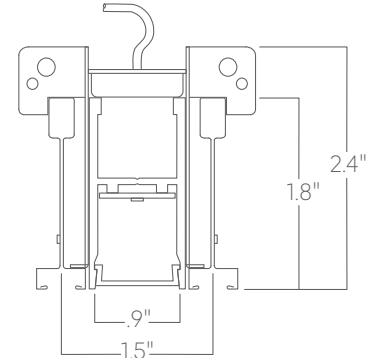
Custom mounting types and ceiling transitions available; consult factory.



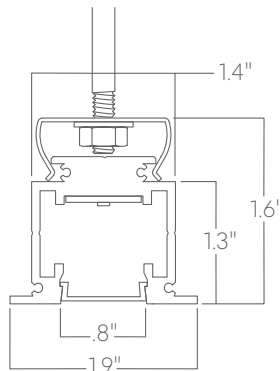
**T15**  
15/16" tee grid



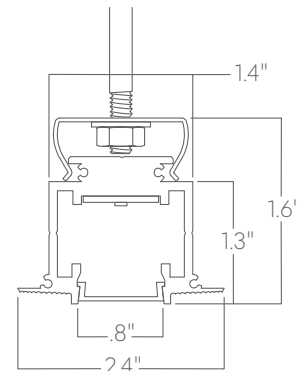
**T**  
9/16" tee grid



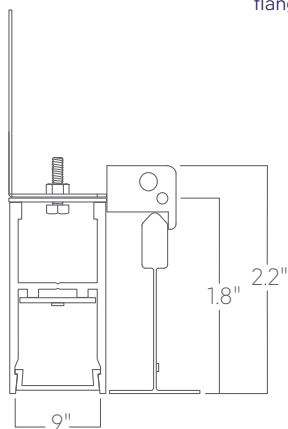
**SG**  
slot grid



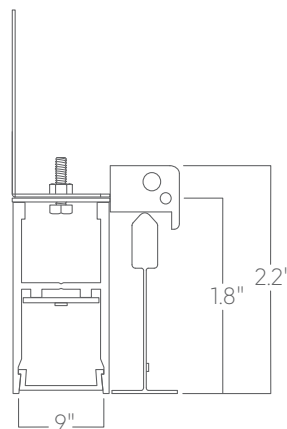
**F**  
flange



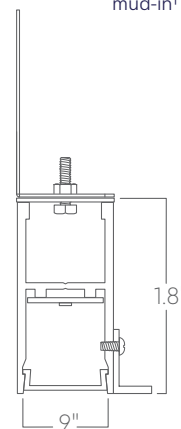
**NT**  
mud-in<sup>1</sup>



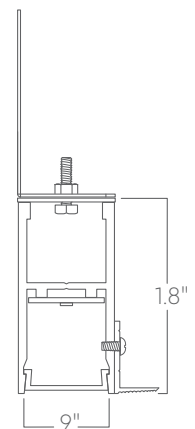
**PM-T**  
perimeter to 9/16" tee grid



**PM-T15**  
perimeter to 15/16" tee grid



**PM-F**  
perimeter to flange



**PM-NT**  
perimeter to mud-in

<sup>1</sup>Installation that alters aperture width compromises lens security. Installer must ensure aperture width is maintained.