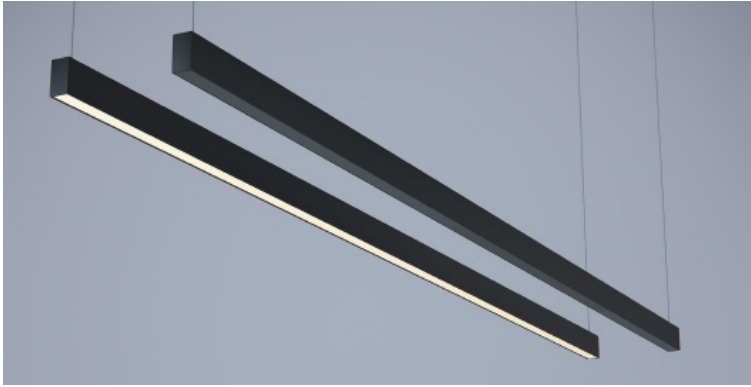


DATE _____ PROJECT _____ FIRM _____ TYPE _____



Architectural luminaire with low profile using specially formulated **BLACK OPTIC** on the direct side that allows the unilluminated fixture to seamlessly blend in to dark environments when off.

FEATURES

- **BLACK OPTIC**
- 100% Direct Lighting
- Available In Made To Measure Lengths Specifiable In 4" Increments
- Patterns Available (See Page 2)
- CRI 90+ Standard; R9>50
- 5 Year, 50,000 Hour Fixture Warranty
- 2700K, 3000K, 3500K & 4000K Color Temperatures Available
- Available with PoE

APPLICATIONS Offices, Lobbies, Retail Stores, Restaurants, Reception Areas & Corridors

CONSTRUCTION Extruded Aluminum Housing with Die Cast Ends. Formed Steel Gear Tray

OPTICS **BLACK OPTIC** Direct, Opal White Film Indirect

WARRANTY 5 Year Limited Warranty (Covers Standard Components)

FINISH Standard Powder-Coated White. Custom RAL Colors Available

FIXTURE RATINGS & CERTIFICATIONS Union Made ETL Listed Made In The USA Damp Location Rated



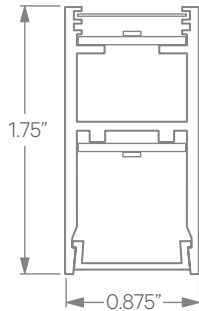
DRIVERS & SENSORS

For Wiring Diagrams and Sensor Information Click [Here](#)



ELECTRICAL Remote Driver with 0-10V Dimming Standard or 'Power Over Wire' System Which Eliminates Power Feed Cord By Combining The Aircraft Cable and Power Feed

EXTRUSION DIMENSIONS



LED SYSTEM INFORMATION

	Nominal System Watts		Nominal Delivered Lumens	
	DIRECT	INDIRECT	DIRECT	INDIRECT
Standard (LTG1)	5.25 W/ft	5.25 W/ft	110 lm/ft	510 lm/ft
Low (LTG2)	3.5 W/ft	3.5 W/ft	75 lm/ft	340 lm/ft
High (LTG3)	7.5 W/ft	7.5 W/ft	160 lm/ft	670 lm/ft

Based on a 3500K luminaire using one driver. Custom outputs available; specify below.

ORDERING

1 2 3 IN - D - 5 6 7 8 9

1 - FIXTURE ID	2 - LENGTH	3 - COLOR TEMP	4 - LED SYSTEM	5 - VOLTAGE	6 - DRIVER
RUSH UPDN BKO	4 - 4 ft 8 - 8 ft X'-X" - Specify Length (4" Increments) PAT - Pattern (Consult Factory)	27 - 2700K/90 CRI 30 - 3000K/90 CRI 35 - 3500K/90 CRI 40 - 4000K/90 CRI	IN - INDIRECT LTG1 - Standard LTG2 - Low LTG3 - High LTGC - Custom Output	D - DIRECT LTG1 - Standard LTG2 - Low LTG3 - High LTGC - Custom Output	UNV - Universal (120/277V) DB - Standard Dimming (0-10V) DB1% - 1% Dimming (0-10V) DB.1% - 0.1% Dimming (0-10V) LTEA - Lutron 2-wire 1% Dimming (120V only) LDE1 - Lutron Digital EcoSystem LDE5 - 5 Series EcoSystem; 5% Dimming PoE - Power over Ethernet. Consult Factory for Compatibility

7 - FINISH	8 - MOUNTING	9 - OTHER OPTIONS
W - White (Standard) BLK* - Black CC* - Custom Color (provide RAL#)	AC - Air Craft Cable (50") ACP - Power Over Aircraft Cable	DC - Dual Circuit (Seperate Up/Dn Control) EM 120V - Emergency Pack EM 277V - Emergency Pack EMCKT - Emergency Circuit

*White cord and canopy provided. Must specify for other requests.

DATE

PROJECT

FIRM

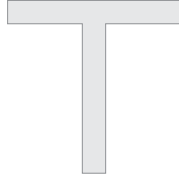
TYPE

PATTERNS

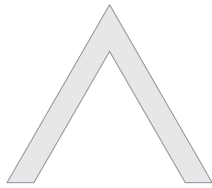
Patterns feature illuminated corners and angles. **Must consult factory for custom corners and patterns.**



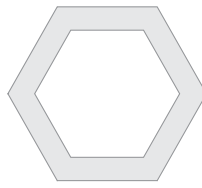
Square Patterns



T Patterns

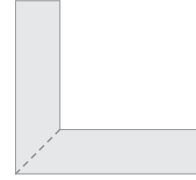


Custom Angles



Custom Patterns

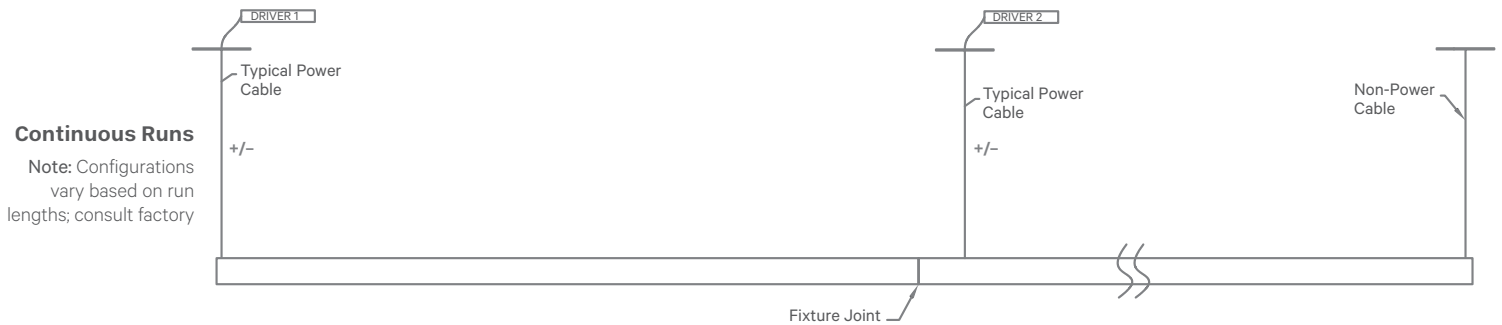
LENS CUT



Mitered

ACP - 'Power Over Aircraft Cable' Option

*PLEASE NOTE: EXTRUSION IS 1-3/4" TALL WHEN USING ACP OPTION



Updated: 11/15/2019