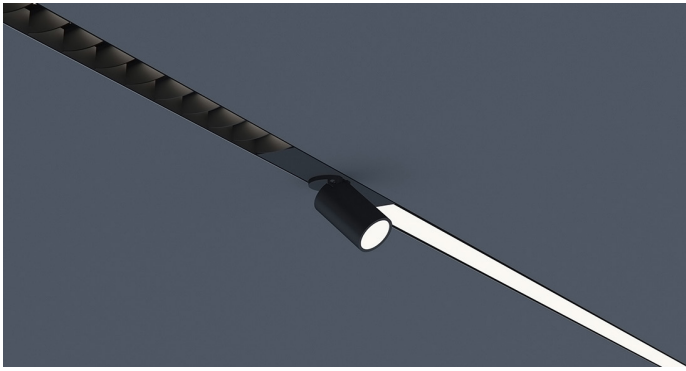




MAGNETO Track System

MAGNETO is an innovative and dynamic track system designed for ease and flexibility. Featuring snap-in magnetic mounting that allows you to rearrange three different modules. Fully customizable to suit your specific needs.


DATE	PROJECT	FIRM	TYPE
------	---------	------	------



Linear low voltage configurable track system with the flexibility of magnetically mounted modules for ease of on-site adjustability and install. Configure in patterns or runs to meet design requirements. Complete with optional indirect lighting.

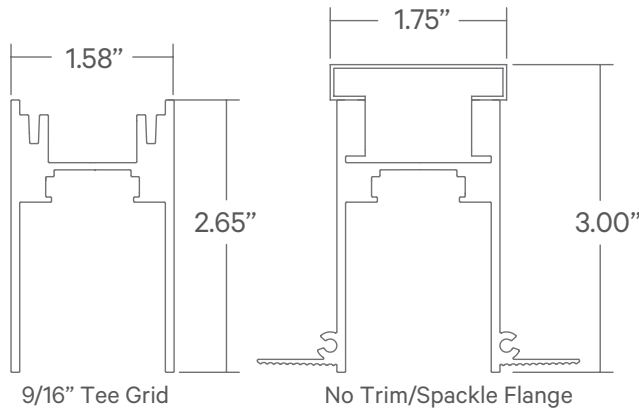
FEATURES

- Two circuits to power Magneto modules
- Optional additional uplight circuit
- Available in custom lengths & long runs to 1/16" accuracy
- Corners & patterns available (see page 3)
- All circuits are dimmable to 1% with 0-10V controls. Uplight is at 10%

APPLICATIONS	Commercial Interiors, Galleries, Retail, Museums, Reception Areas, Hotels, Restaurants		
CONSTRUCTION	Extruded housing with steel end plates.	OPTICS	N/A
WARRANTY	5 year limited warranty (covers standard components)	FINISH	Powder-coated black standard. Optional white powder-coated finish. Custom RAL colors available.
FIXTURE RATINGS & CERTIFICATIONS	Union Made ETL Listed	Made In The USA Dry Location Rated	

ELECTRICAL Dual circuit track. Remote constant voltage driver with integral 1% 0-10V dimming for track. Remote constant current driver for uplight. Do not exceed 80% of driver max per circuit. 32ft maximum remote driver distance from feed. Track must be re-fed every 30ft or when driver max is reached (whichever comes first).

EXTRUSION DIMENSIONS



ORDERING						
1 - FIXTURE ID	2 - LENGTH	3 - DRIVER CKT1 (Track)	4 - DRIVER CKT2 (Track)	5 - VOLTAGE	6 - MOUNTING	7 - FINISH
MAGR - TRK	2 - 2 ft 4 - 4 ft 8 - 8 ft x'-x" - Custom (specify length) **Patterns available consult factory	DR30* - 30W Driver DR60* - 60W Driver DR96* - 96W Driver *Note: 30' of track maximum per driver. Drivers can be remotod up to 32'.	DR30 - 30W Driver DR60 - 60W Driver DR96 - 96W Driver	UNV - Universal (120/277V)	T - 9/16" Tee Grid T - 15"/16" Tee Grid NT - No Trim/Spackle Flange SG - Slot Grid	BLK* - Black (Standard) W* - White CC - Custom Color (provide RAL#) *Interior finish comes standard black, custom colors available. Consult factory.

DATE

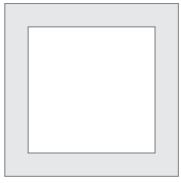
PROJECT

FIRM

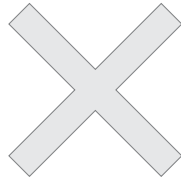
TYPE

CORNERS & PATTERNS

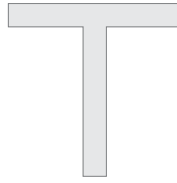
Available with corners, angles, and custom patterns. **Must consult factory for custom corners and patterns.**



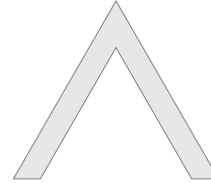
Square Patterns



X Patterns

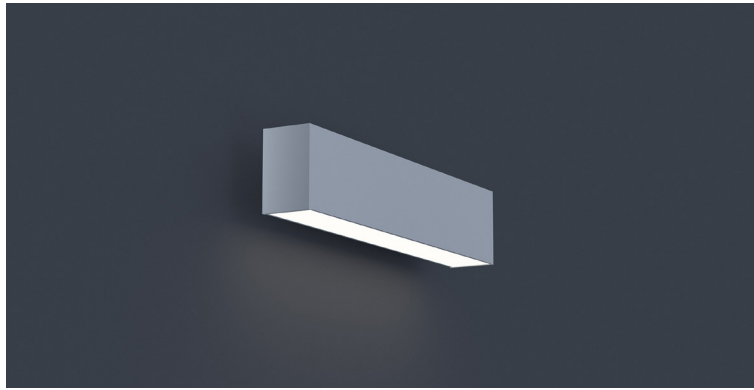


T Patterns



Custom Angles

DATE	PROJECT	FIRM	TYPE
------	---------	------	------



Magneto linear module. Connects to Magneto low voltage track to provide linear downlighting.

FEATURES

- Magnetically held fixture designed to be easily repositioned in Magneto track on site
- Available in lengths up to 8' (6" increments)
- 5 Year, 50,000 hour fixture warranty
- 2700K, 3000K, 3500K, & 4000K color temperatures available
- 0-10V Dimmable

APPLICATIONS	Commercial Interiors, Galleries, Retail, Museums, Reception Areas, Hotels, Restaurants
---------------------	--

CONSTRUCTION	Extruded and cast aluminum components	OPTICS	Extruded high transmission satin acrylic lens with no LED Imaging.
---------------------	---------------------------------------	---------------	--

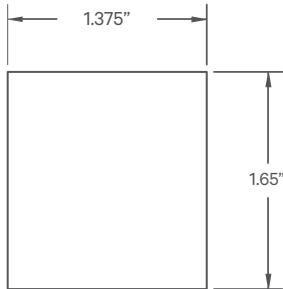
WARRANTY	5 year limited warranty (covers standard components)	FINISH	Powder-coated black standard. Optional white powder-coated finish. Custom RAL colors available.
-----------------	--	---------------	---

FIXTURE RATINGS & CERTIFICATIONS	Union Made ETL Listed	Made In The USA Dry Location Rated
---	--------------------------	---------------------------------------



ELECTRICAL	Powered by Magneto Track System. 0-10V dimmable. Do not exceed 90W per circuit. 'Flip' Fixture in Track to Select Circuit.
-------------------	--

EXTRUSION DIMENSIONS



LED SYSTEM INFORMATION

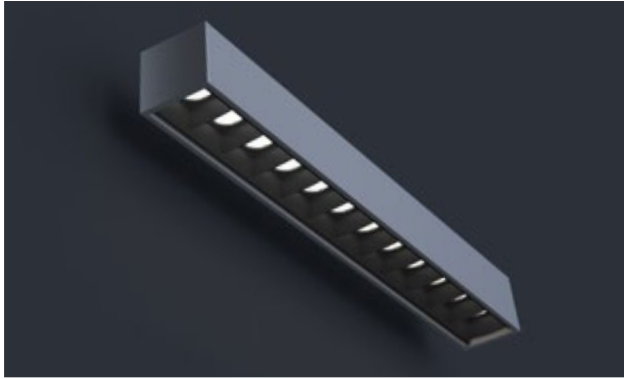
	Nominal System Watts	Nominal Delivered Lumens
Standard (LTG1)	6.25 W/ft	315 Lm/ft
Low (LTG2)	3.25 W/ft	175 Lm/ft

NOTE: Based on a 3500K luminaire.

ORDERING	1	2	3	4	5	6
----------	---	---	---	---	---	---

1 - FIXTURE ID	2 - LENGTH	3 - COLOR TEMP	4 - LED SYSTEM	5 - VOLTAGE	6 - FINISH
MAGR - LIN	1' - 1 ft 2' - 2 ft 3' - 3 ft 4' - 4 ft 6' - 6 ft 8' - 8 ft x'-x" - Custom (specify length to the nearest 6")	27 - 2700K/90 CRI 30 - 3000K/90 CRI 35 - 3500K/90 CRI 40 - 4000K/90 CRI	LTG1 - Standard LTG2 - Low	UNV - Universal (120/277V)	BLK* - Black (Standard) W* - White CC - Custom Color (provide RAL#)

DATE	PROJECT	FIRM	TYPE
------	---------	------	------



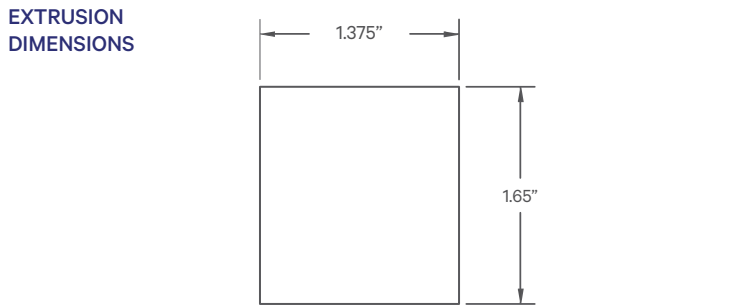
Magneto linear baffle module. Connects to Magneto low voltage track to provide linear downlighting.

FEATURES

- Magnetically held fixture designed to be easily repositioned in Magneto track on site
- Specifiable optic packages
- Available in custom lengths up to 8' (1 foot increments)
- 5 Year, 50,000 hour fixture warranty
- 2700K, 3000K, 3500K, & 4000K color temperatures available

APPLICATIONS	Commercial Interiors, Galleries, Retail, Museums, Reception Areas, Hotels, Restaurants		
CONSTRUCTION	Extruded and cast aluminum components. Injection molded poly-carbonate baffle	OPTICS	Optic Per LED; Various beam spreads available. See below
WARRANTY	5 year limited warranty (covers standard components)	FINISH	Powder-coated black standard. Optional white powder-coated finish. Custom RAL colors available.
FIXTURE RATINGS & CERTIFICATIONS	Union Made ETL Listed	Made In The USA Dry Location Rated	

ELECTRICAL Powered by Magneto Track System. 0-10V dimmable. Do not exceed 90W per circuit. 'Flip' Fixture in Track to Select Circuit.



LED SYSTEM INFORMATION

	System Watts	Delivered Lumens	Efficacy
Standard (LTG1)	3 W/ft	303 Lm/ft	110 Lm/W

*Based on 'WFL' option

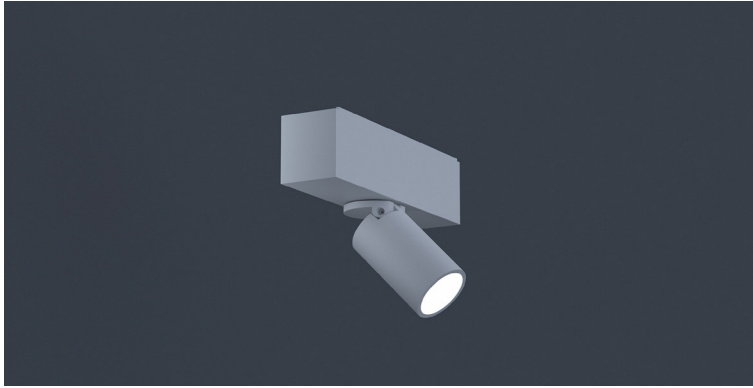
BEAM SPREAD INFO

	SP	FL	WFL
CBCP	5816	4122	3116

ORDERING

1	2	3	4	5	6	7	8
1 - FIXTURE ID	2 - LENGTH	3 - COLOR TEMP	4 - LED SYSTEM	5 - VOLTAGE			
MAGR - BAF	1' - 1 ft 2' - 2 ft 3' - 3 ft 4' - 4 ft 6' - 6 ft 8' - 8 ft x'-x" - Custom (specify length to the nearest 6")	27 - 2700K/90 CRI 30 - 3000K/90 CRI 35 - 3500K/90 CRI 40 - 4000K/90 CRI	LTG1 - Standard	UNV - Universal (120/277V)			
6 - FINISH	7 - FINISH (Baffle)	8 - BEAM SPREAD					
BLK - Black (Standard) W - White CC - Custom Color (provide RAL#)	BLK - Black	SP - 20° Beam; (Spot) FL - 26° Beam Spread; (Flood) WFL - 32° Beam Spread; (Wide Flood)					


DATE	PROJECT	FIRM	TYPE
------	---------	------	------



Magneto accent module. Connects to Magneto low voltage track to provide accent lighting.

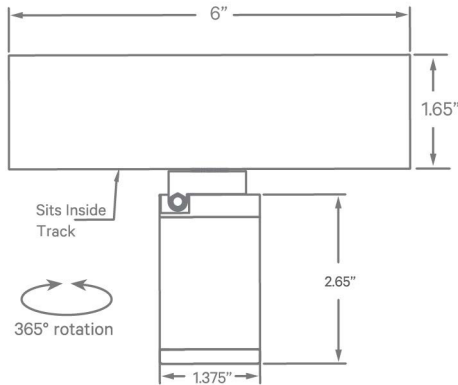
FEATURES

- Magnetically held fixture designed to be easily repositioned in Magneto track on site
- Three beam spreads available
- Glare control accessory available
- Module is dimmable using a 0-10V control wired to the Magneto track
- 2700K, 3000K, 3500K, & 4000K color temperatures available

APPLICATIONS	Commercial Interiors, Galleries, Retail, Museums, Reception Areas, Hotels, Restaurants			
CONSTRUCTION	Extruded and cast aluminum components	OPTICS	Field changeable optic; Beam angle of 14°, 23°, and 33° available. Optional hex louver available.	
WARRANTY	5 year limited warranty (covers standard components)		FINISH	Powder-coated black standard. Optional white powder-coated finish. Custom RAL colors available.
FIXTURE RATINGS & CERTIFICATIONS	Union Made ETL Listed	Made In The USA Dry Location Rated		

ELECTRICAL	Powered by Magneto Track System. 0-10V dimmable. Do not exceed 90W per circuit. 'Flip' Fixture in Track to Select Circuit.
-------------------	--

EXTRUSION DIMENSIONS



LED SYSTEM INFORMATION

	System Watts	Delivered Lumens	Efficacy
Standard (LTG1)	5 W	328 Lm	89 Lm/W

*Based on 'WFL' option

BEAM SPREAD INFORMATION

	SP	FL	WFL
LTG1 CBCP	1754	1374	994

ORDERING



1 - FIXTURE ID	2 - LENGTH	3 - COLOR TEMP	4 - LED SYSTEM	5 - VOLTAGE	6 - FINISH
MAGR - SPT	N/A	27 - 2700K/90 CRI 30 - 3000K/90 CRI 35 - 3500K/90 CRI 40 - 4000K/90 CRI	LTG1 - Standard	UNV - Universal (120/277V)	BLK - Black (Standard) W - White CC - Custom Color (provide RAL#)

7 - BEAM SPREAD	8 - OPTIONAL ACCESSORIES
SP - 24° Beam; 5250 CBCP FL - 27° Beam Spread; 1700 CBCP WFL - 30° Beam Spread; 900 CBCP	HEX - Hex Louver