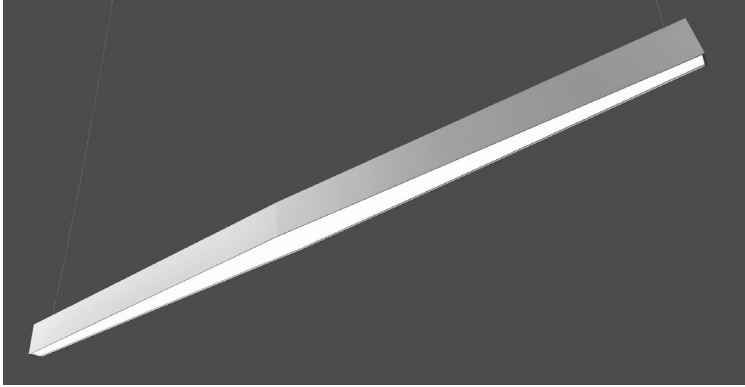




DATE	PROJECT	FIRM	TYPE
------	---------	------	------



Multi-form architectural luminaire with transitioning aperture size ranging from 2" to 4". Two different patterns available (see page 2) in 8-foot and 12-foot lengths.

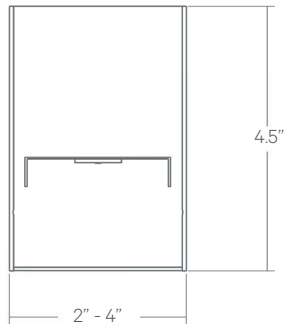
FEATURES

- Damp Location Rated
- CRI 90+ Standard
- 5 Year, 50,000 Hour Fixture Warranty
- 2700K, 3000K, 3500K, 4000K & 5000K Color Temperatures Available

APPLICATIONS	Offices, Lobbies, Retail Stores, Reception Areas & Corridors			
CONSTRUCTION	Extruded Aluminum Housing and End Caps, Formed Steel Gear Tray	OPTICS	Extruded High Transmission Satin Acrylic Lens With No LED Imaging. Additional Optics Available	
WARRANTY	5 Year Limited Warranty (Covers Standard Components)		FINISH	Standard Powder-Coated White. Custom RAL Colors Available
FIXTURE RATINGS & CERTIFICATIONS	Union Made ETL Listed	Made In The USA Damp Location Rated	 	

ELECTRICAL Integral Driver With 0-10V 10% Dimming Standard. Several Driver Options Available. See Below For Lutron Dimming Information

EXTRUSION DIMENSIONS



LED SYSTEM INFORMATION

	Nominal System Watts	Nominal Delivered Lumens
Standard (LTG1)	7.25 W/ft	* Lm/ft
Low (LTG2)	5 W/ft	* Lm/ft
High (LTG3)	8.75 W/ft	* Lm/ft

*Output will vary throughout fixture length due to aperture change.

ORDERING									
1	2	3	4	5	6	7	8	9	10
1 - FIXTURE ID DIMENSION	2 - LENGTH 8 - 8 ft 12 - 12 ft	3 - LED SYSTEM LTG1 - Standard LTG2 - Low LTG3 - High	4 - COLOR TEMP 27 - 2700K/90 CRI 30 - 3000K/90 CRI 35 - 3500K/90 CRI 40 - 4000K/90 CRI 50 - 5000K/90 CRI TW* - Tunable White RGBW* - RGB + 3000K <small>*Must use DMX Driver (Remote)</small>	5 - VOLTAGE UNV - Universal (120/277V)	6 - DRIVER DB - Standard 10% Dimming (0-10V) DB1% - 1% Dimming (0-10V) DB.01% - .01% Dimming (0-10V) LTEA - Lutron 2-wire 1% Dimming L3DA - Lutron 3-wire 1% Dimming LDE1 - Lutron Digital EcoSystem LDE5 - 5 Series EcoSystem; 5% Dimming DMX - For Color Tuning and RGBW <small>*Refer to 'Electrical' Information Above</small>	7 - FINISH W - White (Standard) BLK - Black CC - Custom Color (provide RAL#)	8 - MOUNTING AC - Air Craft Cable (50") SM - Surface Mount	9 - PATTERN (see page 2) A - Pattern A B - Pattern B	10 - OPTIONS EM 120V - Emergency Pack EM 277V - Emergency Pack

DATE

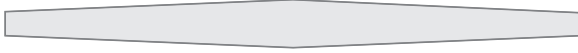
PROJECT

FIRM

TYPE

PATTERN OPTIONS

A

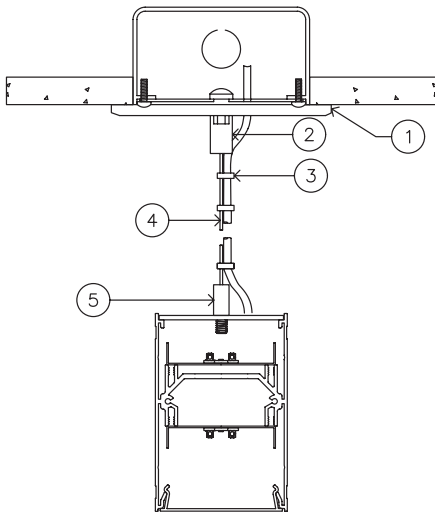


B



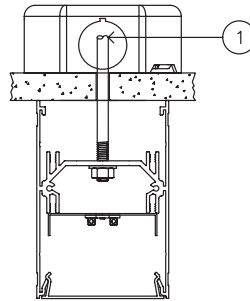
MOUNTING OPTIONS

AC - Air Craft Cable (50")



- 1 - 5" Round Canopy (Standard White Finish)
- 2 - Canopy Retainer
- 3 - SJT Cord (Standard White)
- 4 - Air Craft Cable
- 5 - Gripper

SM - Surface Mount



- 1 - Threaded Rod (not supplied)