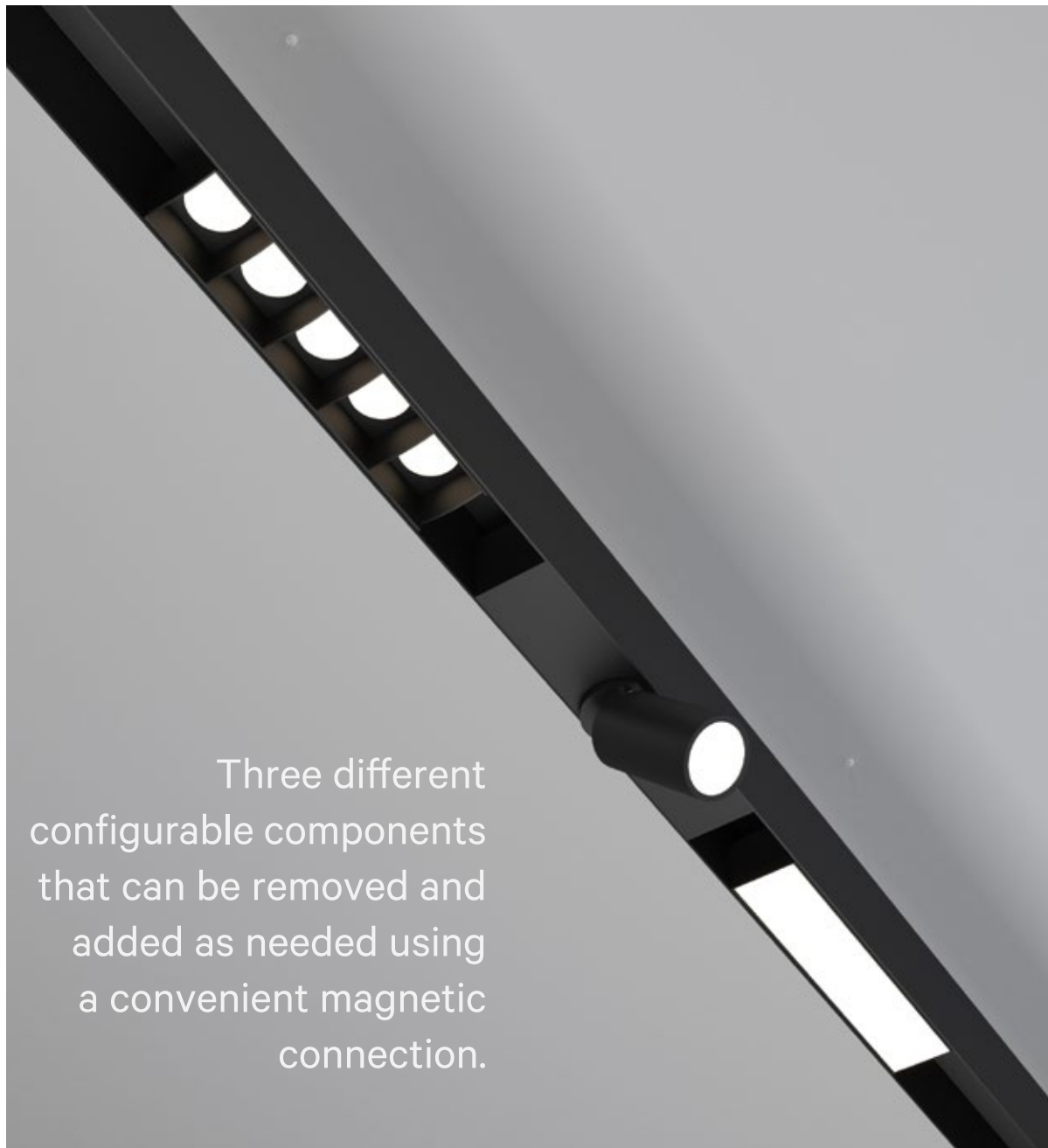
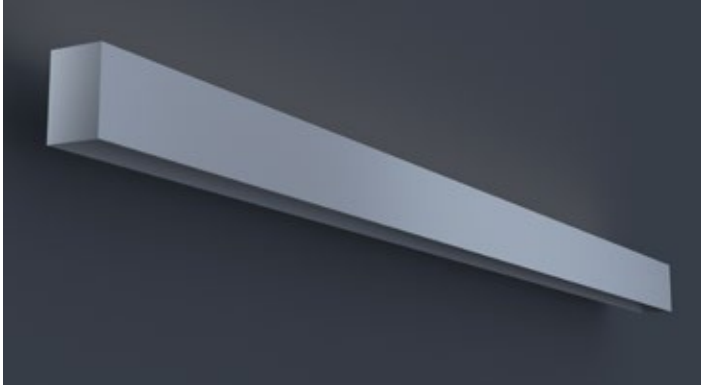


MAGNETO Track System



NOTE: Fixture components to be specified separately; see spec sheets on pages 2-6.


DATE	PROJECT	FIRM	TYPE
------	---------	------	------



Linear low voltage configurable track system with the flexibility of magnetically mounted heads for ease of on-site adjustability and install. Configure in patterns and runs to meet design requirements. Complete with optional indirect lighting.

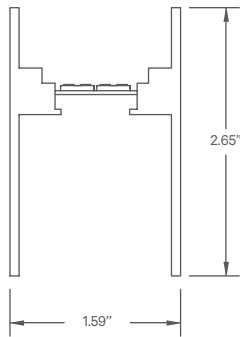
FEATURES

- Two circuits to power Magneto modules
- Optional additional uplight circuit
- Available In custom lengths & long runs to 1/16" accuracy
- Corners & patterns available (see page 3)
- 5 year, 50,000 hour fixture warranty
- All circuits are dimmable to 1% with 0-10V controls

APPLICATIONS	Commercial Interiors, Galleries, Retail, Museums, Reception Areas, Hotels, Restaurants		
CONSTRUCTION	Extruded housing with steel end plates.	OPTICS	Optional uplight with frosted lens.
WARRANTY	5 year limited warranty (covers standard components)	FINISH	Powder-coated black standard. Optional white powder-coated finish. Custom RAL colors available.
FIXTURE RATINGS & CERTIFICATIONS	Union Made ETL Listed	Made In The USA Dry Location Rated	

ELECTRICAL Uplight and dual circuit track. Remote constant voltage driver with integral 1% 0-10V dimming for track. Remote constant current driver for uplight. Do not exceed 80% of driver max per circuit. 32ft maximum remote driver distance from feed. Track must be re-fed every 30ft or when driver max is reached (whichever comes first).

EXTRUSION DIMENSIONS



LED SYSTEM INFORMATION (FOR OPTIONAL UPLIGHT ONLY)

	System Watts	Delivered Lumens
Standard (LTG1)	5.25 W/ft	450 Lm/ft
Low (LTG2)	3.5 W/ft	300 Lm/ft
High (LTG3)	7.25 W/ft	600 Lm/ft

Uplight only. Based on a 3500K luminaire using one driver. Please consult factory for custom lumen outputs & wattage.

ORDERING	1	2	3	4	5	6	7	8	9	10	11
-----------------	---	---	---	---	---	---	---	---	---	----	----

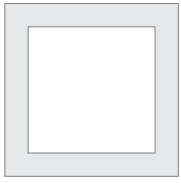
1 - FIXTURE ID MAG - TRK	2 - LENGTH 2 - 2 ft 4 - 4 ft 8 - 8 ft x'-x" - Custom (specify length) **Patterns available, consult factory	3 - COMPONENT UP - Uplight NA - No Uplight (Track Only) UP.CUS - Intermittent Uplight In Custom Locations; must submit drawing.	4 - LED SYSTEM (Uplight) LTG1 - Standard LTG2 - Low LTG3 - High C - Custom Output (ie-C550Lm/ft)	5 - COLOR TEMP 27 - 2700K/90 CRI 30 - 3000K/90 CRI 35 - 3500K/90 CRI 40 - 4000K/90 CRI	6 - VOLTAGE UNV - Universal (120/277V)
------------------------------------	---	--	---	---	--

7 - DRIVER (Uplight) DB - Standard 10% Dimming (0-10V) DB1% - 1% Dimming (0-10V) DB.01% - .01% Dimming (0-10V)	8 - DRIVER CKT1 (Track) DR30* - 30W Driver DR60* - 60W Driver DR96* - 96W Driver *Note: Drivers can be remoted up to 32'. 30' of track maximum per driver	9 - DRIVER CK2 (Track) DR30 - 30W Driver DR60 - 60W Driver DR96 - 96W Driver	10 - FINISH BLK* - Black (Standard) W* - White CC - Custom Color (provide RAL#) *Interior finish comes standard black, custom colors available. Consult factory.	11 - MOUNTING AC - Air Craft Cable (50")
--	--	--	---	--

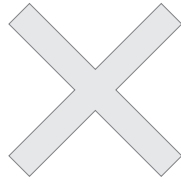
DATE	PROJECT	FIRM	TYPE
------	---------	------	------

CORNERS & PATTERNS

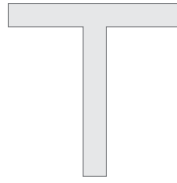
Available with corners, angles, and custom patterns. **Must consult factory for custom corners and patterns.**



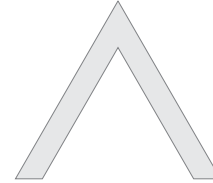
Square Patterns



X Patterns



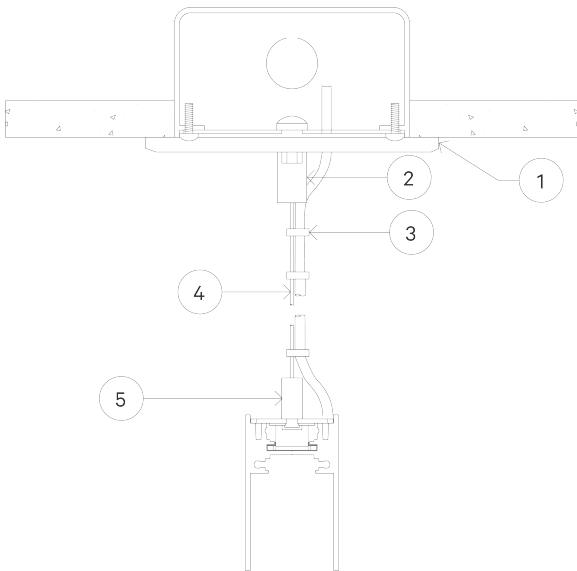
T Patterns



Custom Angles

MOUNTING OPTIONS

AC - Air Craft Cable (50")



- 1 - Canopy
- 2 - Canopy Retainer
- 3 - SJT Cord
- 4 - Aircraft Cable
- 5 - Gripper


DATE	PROJECT	FIRM	TYPE
------	---------	------	------



Magneto linear module. Connects to Magneto low voltage track to provide linear downlighting.

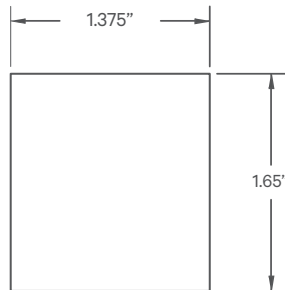
FEATURES

- Magnetically held fixture designed to be easily repositioned in Magneto track on site
- Available in lengths up to 8' (6" increments)
- 5 Year, 50,000 hour fixture warranty
- 2700K, 3000K, 3500K, & 4000K color temperatures available

APPLICATIONS	Commercial Interiors, Galleries, Retail, Museums, Reception Areas, Hotels, Restaurants		
CONSTRUCTION	Extruded and cast aluminum components	OPTICS	Extruded high transmission satin acrylic lens with no LED Imaging.
WARRANTY	5 year limited warranty (covers standard components)	FINISH	Powder-coated black standard. Optional white powder-coated finish. Custom RAL colors available.
FIXTURE RATINGS & CERTIFICATIONS	Union Made ETL Listed	Made In The USA Dry Location Rated	

ELECTRICAL Powered by Magneto Track System. 0-10V dimmable. Do not exceed 90W per circuit. 'Flip' Fixture in Track to Select Circuit.

EXTRUSION DIMENSIONS



LED SYSTEM INFORMATION

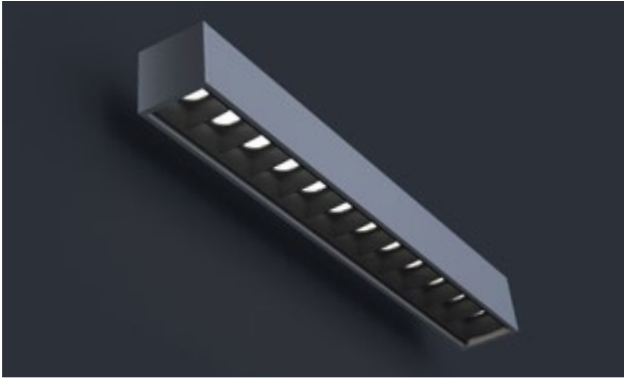
	System Watts	Delivered Lumens	Efficacy
Standard (LTG1)	5.5 W/ft	480 Lm/ft	87 Lm/W
Low (LTG2)	3.7 W/ft	322 Lm/ft	87 Lm/W

NOTE: Based on a 3500K luminaire.

ORDERING

1 - FIXTURE ID	2 - LENGTH	3 - LED SYSTEM	4 - COLOR TEMP	5 - VOLTAGE	6 - FINISH
MAG - LIN	1' - 1 ft 2' - 2 ft 3' - 3 ft 4' - 4 ft 6' - 6 ft 8' - 8 ft x'-x" - Custom (specify length to the nearest 6")	LTG1 - Standard LTG2 - Low	27 - 2700K/90 CRI 30 - 3000K/90 CRI 35 - 3500K/90 CRI 40 - 4000K/90 CRI	UNV - Universal (120/277V)	BLK - Black (Standard) W - White CC - Custom Color (provide RAL#)


DATE	PROJECT	FIRM	TYPE
------	---------	------	------



Magneto linear baffle module. Connects to Magneto low voltage track to provide linear downlighting.

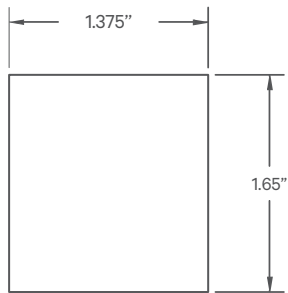
FEATURES

- Magnetically held fixture designed to be easily repositioned in Magneto track on site
- Specifiable optic packages
- Available In custom lengths up to 8' (1 foot increments)
- 5 Year, 50,000 hour fixture warranty
- 2700K, 3000K, 3500K, & 4000K color temperatures available

APPLICATIONS	Commercial Interiors, Galleries, Retail, Museums, Reception Areas, Hotels, Restaurants		
CONSTRUCTION	Extruded and cast aluminum components. Injection molded poly-carbonate baffle	OPTICS	Optic Per LED; Various beam spreads available. See below
WARRANTY	5 year limited warranty (covers standard components)	FINISH	Powder-coated black standard. Optional white powder-coated finish. Custom RAL colors available.
FIXTURE RATINGS & CERTIFICATIONS	Union Made ETL Listed	Made In The USA Dry Location Rated	

ELECTRICAL Powered by Magneto Track System. 0-10V dimmable. Do not exceed 90W per circuit. 'Flip' Fixture in Track to Select Circuit.

EXTRUSION DIMENSIONS



LED SYSTEM INFORMATION

	System Watts	Delivered Lumens	Efficacy
Standard (LTG1)	3 W/ft	330 Lm/ft	110 Lm/W

BEAM SPREAD INFO

	SP17	FL30	WFL60
CBCP	TBA	TBA	TBA

ORDERING

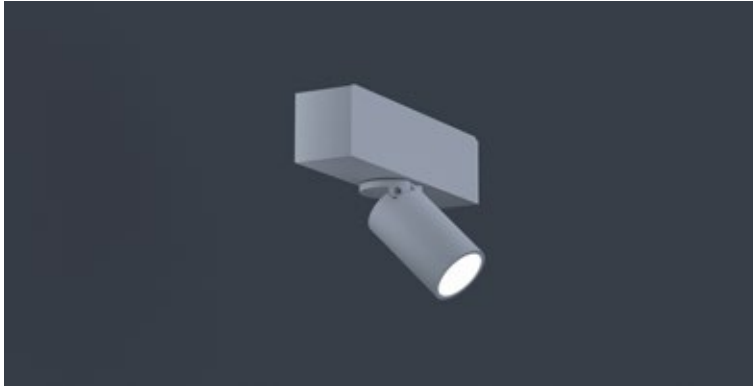


1 - FIXTURE ID MAG - BAF	2 - LENGTH 1' - 1 ft 2' - 2 ft 3' - 3 ft 4' - 4 ft 6' - 6 ft 8' - 8 ft x' - Custom (specify length to the nearest foot)	3 - LED SYSTEM LTG1 - Standard	4 - COLOR TEMP 27 - 2700K/90 CRI 30 - 3000K/90 CRI 35 - 3500K/90 CRI 40 - 4000K/90 CRI	5 - VOLTAGE UNV - Universal (120/277V)	6 - FINISH (Housing) BLK - Black (Standard) W - White CC - Custom Color (provide RAL)	7 - FINISH (Baffle) BLK - Black
------------------------------------	--	--	---	---	--	---

8 - BEAM SPREAD

SP - 17° Beam; TBA CBCP (Spot)
 FL - 30° Beam Spread; TBA CBCP (Flood)
 WFL - 60° Beam Spread; TBA CBCP (Wide Flood)


DATE	PROJECT	FIRM	TYPE
------	---------	------	------



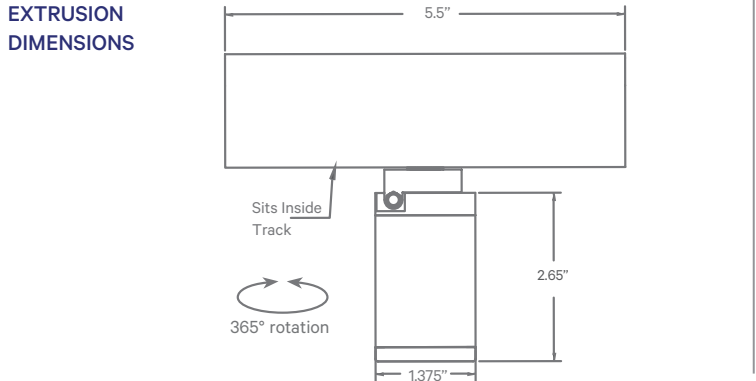
Magneto accent module. Connects to Magneto low voltage track to provide accent lighting.

FEATURES

- Magnetically held fixture designed to be easily repositioned in Magneto track on site
- Three beam spreads available
- Glare control accessories
- Module is dimmable using a 0-10V control wired to the Magneto track
- 2700K, 3000K, 3500K, & 4000K color temperatures available

APPLICATIONS	Commercial Interiors, Galleries, Retail, Museums, Reception Areas, Hotels, Restaurants			
CONSTRUCTION	Extruded and cast aluminum components	OPTICS	Field changeable optic; Beam angle of 14°, 23°, and 33° available. Optional hex louver available.	
WARRANTY	5 year limited warranty (covers standard components)		FINISH	Powder-coated black standard. Optional white powder-coated finish. Custom RAL colors available.
FIXTURE RATINGS & CERTIFICATIONS	Union Made ETL Listed	Made In The USA Dry Location Rated		

ELECTRICAL Powered by Magneto Track System. 0-10V dimmable. Do not exceed 90W per circuit. 'Flip' Fixture in Track to Select Circuit.



LED SYSTEM INFORMATION

	System Watts	Delivered Lumens	Efficacy
Standard (LTG1)	4.5 W	400 Lm	89 Lm/W

BEAM SPREAD INFORMATION

	SP (14°)	FL (23°)	WFL (33°)
LTG1 CBCP	5350	1200	900



1 - FIXTURE ID MAG - SPT	2 - LED SYSTEM LTG1 - Standard	3 - COLOR TEMP 27 - 2700K/90 CRI 30 - 3000K/90 CRI 35 - 3500K/90 CRI 40 - 4000K/90 CRI	4 - VOLTAGE UNV - Universal (120/277V)	5 - FINISH BLK - Black (Standard) W - White CC - Custom Color (provide RAL#)
6 - BEAM SPREAD SP - 14° Beam; 5250 CBCP FL - 23° Beam Spread; 1700 CBCP WFL - 33° Beam Spread; 900 CBCP	7 - OPTIONAL ACCESSORIES HEX - Hex Louver			