

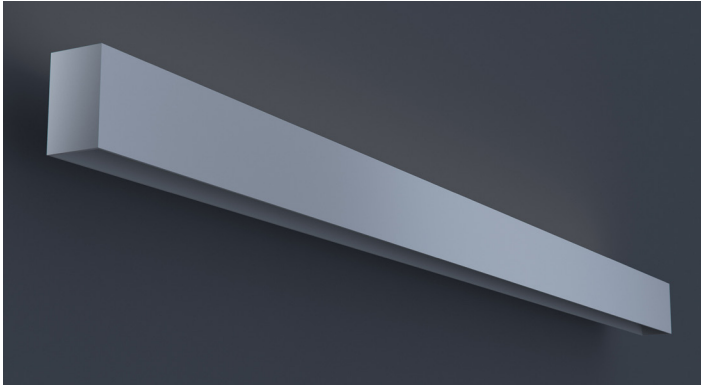


MAGNETO Track System

MAGNETO is an innovative and dynamic track system designed for ease and flexibility. Featuring snap-in magnetic mounting that allows you to rearrange three different modules. Fully customizable to suit your specific needs.



| | | | |
|------|---------|------|------|
| DATE | PROJECT | FIRM | TYPE |
|------|---------|------|------|



Surface mounted, linear low voltage configurable track system with the flexibility of magnetically mounted modules for ease of on-site adjustability and install. Configure in patterns or runs to meet design requirements.

FEATURES

- Two Circuits to Power Magneto Modules
- Available In Made To Measure Lengths Accurate Up To 1/16"
- CRI 90+ Standard; R9>50
- Patterns Available (See Page 2)
- All Circuits Are Dimmable To 1% With 0-10V Controls. Uplight Is At 10%

APPLICATIONS Commercial Interiors, Galleries, Retail, Museums, Reception Areas, Hotels, Restaurants

CONSTRUCTION Extruded Housing with Steel End Plates **OPTICS** N/A

WARRANTY 5 Year Limited Warranty (Covers Standard Components) **FINISH** Powder-Coated Black Standard. Optional White Powder-Coated Finish. Custom RAL Colors Available

FIXTURE RATINGS & CERTIFICATIONS Union Made ETL Listed Made In The USA Damp Location Rated



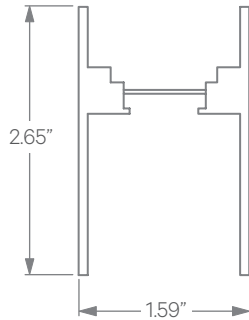
DRIVERS & SENSORS



For Wiring Diagrams and Sensor Information Click [Here](#)

ELECTRICAL Dual circuit track. Remote constant voltage driver with integral 1% 0-10V dimming for track. Do not exceed 80% of driver max per circuit. 20ft maximum remote driver distance from feed. Track must be re-fed every 30ft or when driver max is reached (whichever comes first).

EXTRUSION DIMENSIONS



1 - FIXTURE ID
MAGS - TRK

2 - LENGTH
2 - 2 ft
4 - 4 ft
8 - 8 ft
X'-X" - Specify Length
PAT - Pattern
(Consult Factory)

3 - VOLTAGE
UNV - Universal
(120/277V)

4 - DRIVER CKT1 (Track)
DR30* - 30W Driver
DR60* - 60W Driver
DR96* - 96W Driver

*Note: Drivers can be removed up to 32' 30' of track maximum per driver

5 - DRIVER CK2 (Track)
DR30 - 30W Driver
DR60 - 60W Driver
DR96 - 96W Driver

6 - FINISH
BLK* - Black (Standard)
W* - White
CC - Custom Color
(provide RAL#)

7 - MOUNTING
SM - Surface Mount

*Interior finish comes standard black, custom colors available. Consult factory

DATE

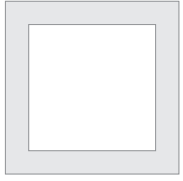
PROJECT

FIRM

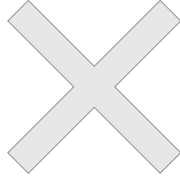
TYPE

PATTERNS

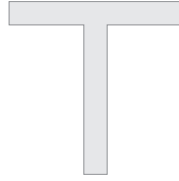
Patterns feature illuminated corners and angles. **Must consult factory for custom corners and patterns.**



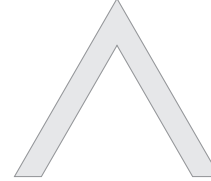
Square Patterns



X Patterns

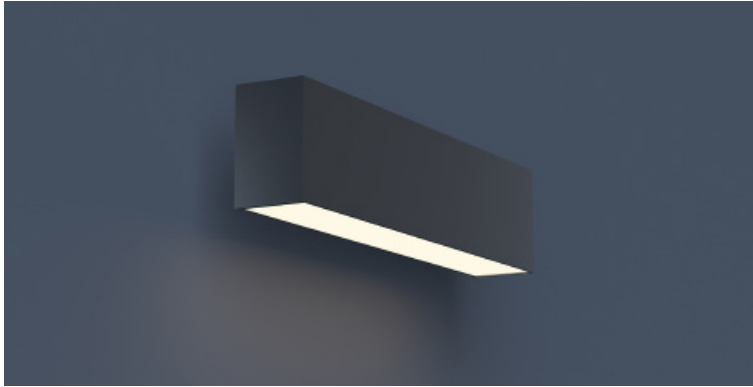


T Patterns



Custom Angles

| | | | |
|------|---------|------|------|
| DATE | PROJECT | FIRM | TYPE |
|------|---------|------|------|



Magneto linear module. Connects to Magneto low voltage track to provide linear downlighting. Optional **BLACK OPTIC** that allows the unilluminated fixture to seamlessly blend in to dark environments and delivers full illumination when switched on.

FEATURES

- Magnetically Held Fixture Designed to Be Easily Repositioned in Magneto Track On Site
- Optional **BLACK OPTIC**
- Available in Lengths Up To 8' (6" Increments)
- CRI 90+ Standard; R9>50
- 5 Year, 50,000 Hour Fixture Warranty
- 2700K, 3000K, 3500K & 4000K Color Temperatures Available
- 0-10V Dimmable

APPLICATIONS Commercial Interiors, Galleries, Retail, Museums, Reception Areas, Hotels, Restaurants

CONSTRUCTION Extruded and Cast Aluminum Components | **OPTICS** Extruded High Transmission Satin Acrylic Lens with No LED Imaging. **BLACK OPTIC** Optional.

WARRANTY 5 Year Limited Warranty (Covers Standard Components) | **FINISH** Powder-Coated Black Standard. Optional White Powder-Coated Finish. Custom RAL Colors Available

FIXTURE RATINGS & CERTIFICATIONS Union Made ETL Listed | Made In The USA Damp Location Rated

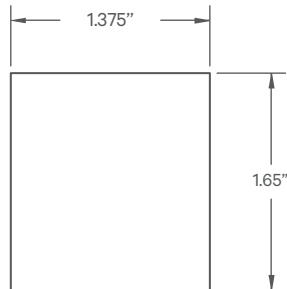


DRIVERS
For Wiring Diagrams Click [Here](#)



ELECTRICAL Powered by Magneto Track System. 0-10V Dimmable. 'Flip' Fixture in Track to Select Circuit

EXTRUSION DIMENSIONS



LED SYSTEM INFORMATION

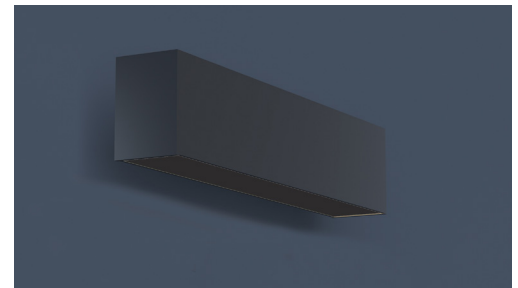
| | Nominal System Watts | Nominal Delivered Lumens |
|-----------------|----------------------|--------------------------|
| Standard (LTG1) | 8 W/ft | 500 lm/ft |
| Low (LTG2) | 4.5 W/ft | 280 lm/ft |

NOTE: Based on a 3500K luminaire



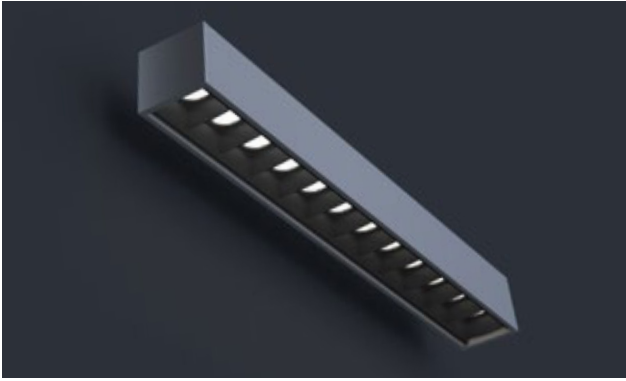
- | | | | | |
|------------------------------------|---|---|--|--|
| 1 - FIXTURE ID MAG - LIN | 2 - LENGTH 2 - 2 ft 4 - 4 ft 8 - 8 ft X'-X" - Specify Length (To the nearest 6") | 3 - COLOR TEMP 27 - 2700K/90 CRI 30 - 3000K/90 CRI 35 - 3500K/90 CRI 40 - 4000K/90 CRI | 4 - LED SYSTEM LTG1 - Standard LTG2 - Low | 5 - VOLTAGE UNV - Universal (120/277V) |
|------------------------------------|---|---|--|--|

- | | |
|---|--|
| 6 - FINISH BLK - Black (Standard) CC - Custom Color (provide RAL#) | 7 - OPTICS SD - Standard Diffuser BKO™ - BLACK OPTIC |
|---|--|



Shown with optional **BLACK OPTIC**


| | | | |
|------|---------|------|------|
| DATE | PROJECT | FIRM | TYPE |
|------|---------|------|------|



Magneto linear baffle module. Connects to Magneto low voltage track to provide linear downlighting.

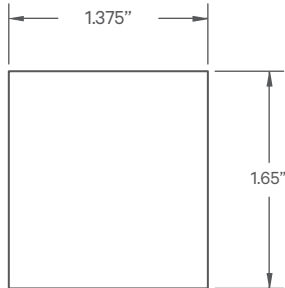
FEATURES

- Magnetically Held Fixture Designed to Be Easily Repositioned in Magneto Track On Site
- Specifiable Optic Packages
- CRI 90+ Standard; R9>50
- Available In Custom Lengths Up To 8' (1 Foot Increments)
- 5 Year, 50,000 Hour Fixture Warranty
- 2700K, 3000K, 3500K & 4000K Color Temperatures Available

| | | | |
|---|---|--|---|
| APPLICATIONS | Commercial Interiors, Galleries, Retail, Museums, Reception Areas, Hotels, Restaurants | | |
| CONSTRUCTION | Extruded and Cast Aluminum Components. Injection Molded Poly-Carbonate Baffle | OPTICS | Optic Per LED; Various Beam Spreads Available. See Below |
| WARRANTY | 5 Year Limited Warranty (Covers Standard Components) | FINISH | Powder-Coated Black Standard. Optional White Powder-Coated Finish. Custom RAL Colors Available |
| FIXTURE RATINGS & CERTIFICATIONS | Union Made ETL Listed | Made In The USA Damp Location Rated |  |
| ELECTRICAL | Powered by Magneto Track System. 0-10V Dimmable. Do Not Exceed 90W Per Circuit. 'Flip' Fixture in Track to Select Circuit | | DRIVERS & SENSORS For Wiring Diagrams and Sensor Information Click Here |



EXTRUSION DIMENSIONS



LED SYSTEM INFORMATION

| | System Watts | Delivered Lumens | Efficacy |
|-----------------|--------------|------------------|----------|
| Standard (LTG1) | 3 W/ft | 303 lm/ft | 110 LPW |

*Based on 'WFL' option

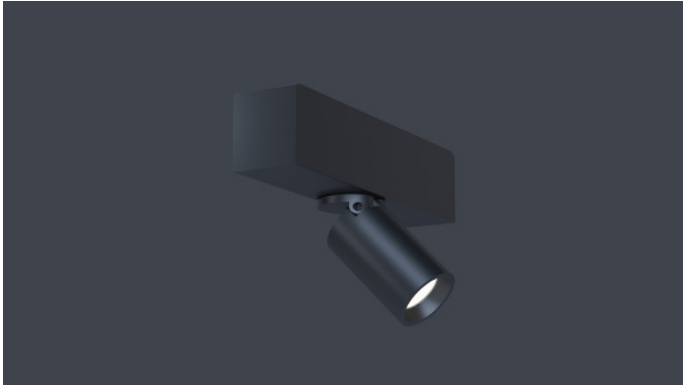
BEAM SPREAD INFORMATION

| | SP | FL | WFL |
|------|------|------|------|
| CBCP | 5816 | 4122 | 3116 |

| | | | | | | | | |
|-----------------|---|---|---|---|---|---|--|---|
| ORDERING |  |  |  |  |  |  |  |  |
| | 1 | 2 | 3 | 4 | 5 | 6 | 7 | 8 |

| | | | | | |
|---|--|---|--|---|--|
| 1 - FIXTURE ID MAG - BAF | 2 - LENGTH 1' - 1 ft 2' - 2 ft 3' - 3 ft 4' - 4 ft 6' - 6 ft 8' - 8 ft X' - Specify Length (To the nearest 1ft) | 3 - COLOR TEMP 27 - 2700K/90 CRI 30 - 3000K/90 CRI 35 - 3500K/90 CRI 40 - 4000K/90 CRI | 4 - LED SYSTEM LTG1 - Standard | 5 - VOLTAGE UNV - Universal (120/277V) | 6 - FINISH BLK - Black (Standard) CC - Custom Color (provide RAL#) |
| 7 - FINISH (Baffle) BLK - Black | 8 - BEAM SPREAD SP - 20° Beam; (Spot) FL - 26° Beam Spread; (Flood) WFL - 32° Beam Spread; (Wide Flood) | | | | |


| | | | |
|------|---------|------|------|
| DATE | PROJECT | FIRM | TYPE |
|------|---------|------|------|



Small, magneto accent module. Connects to Magneto low voltage track to provide accent lighting.

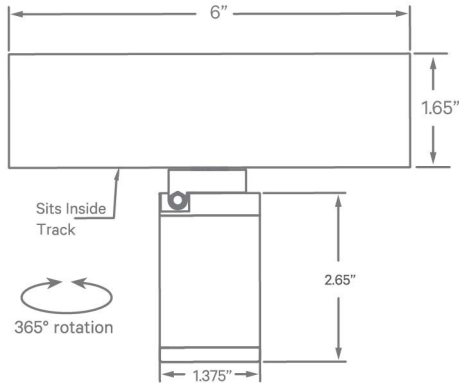
FEATURES

- Magnetically Held Fixture Designed to Be Easily Repositioned in Magneto Track On Site
- Three Beam Spreads Available
- CRI 90+ Standard; R9>50
- Glare Control Accessory Available
- Module is Dimmable Using a 0-10V Control Wired to the Magneto Track
- 2700K, 3000K, 3500K & 4000K Color Temperatures Available

| | | | |
|---|--|--|---|
| APPLICATIONS | Commercial Interiors, Galleries, Retail, Museums, Reception Areas, Hotels, Restaurants | | |
| CONSTRUCTION | Extruded and Cast Aluminum Components | OPTICS | Field Changeable Optic; Beam Angle of 24°, 27°, and 30° Available. Optional Hex Louver Available |
| WARRANTY | 5 Year Limited Warranty (Covers Standard Components) | FINISH | Powder-Coated Black Standard. Optional White Powder-Coated Finish. Custom RAL Colors Available |
| FIXTURE RATINGS & CERTIFICATIONS | Union Made ETL Listed | Made In The USA Damp Location Rated |  DRIVERS For Wiring Diagrams Click Here |
| ELECTRICAL | Powered by Magneto Track System. 0-10V Dimmable. 'Flip' Fixture in Track to Select Circuit | | |



EXTRUSION DIMENSIONS



LED SYSTEM INFORMATION

| | Nominal System Watts | Nominal Delivered Lumens |
|----|----------------------|--------------------------|
| SM | 5 W | 328 lm |

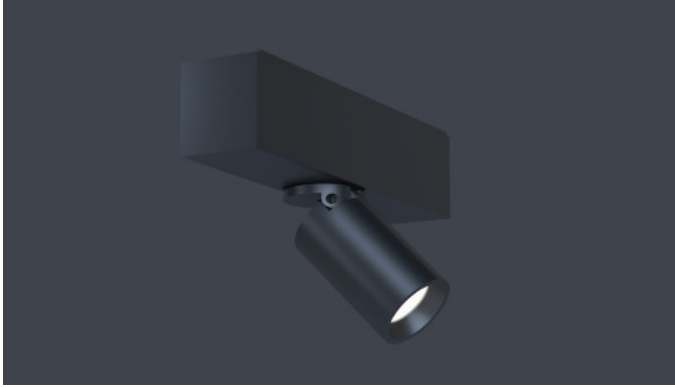
*Based on 'WFL' option in 3500K

ORDERING

| | | | | | | | |
|---|---|---|---|---|---|---|---|
| 1 | 2 | 3 | 4 | 5 | 6 | 7 | 8 |
|---|---|---|---|---|---|---|---|

| | | | | | |
|--|---|---|--|--|---|
| 1 - FIXTURE ID MAG - SPT | 2 - SIZE SM | 3 - COLOR TEMP 27 - 2700K/90 CRI 30 - 3000K/90 CRI 35 - 3500K/90 CRI 40 - 4000K/90 CRI | 4 - LED SYSTEM LTG1 - Standard | 5 - VOLTAGE UNV - Universal (120/277V) | 6 - FINISH BLK - Black (Standard) CC - Custom Color (provide RAL#) |
| 7 - BEAM SPREAD SP - 24° Beam; 1754 CBCP FL - 27° Beam Spread; 1700 CBCP WFL - 30° Beam Spread; 994 CBCP | 8 - OPTIONAL ACCESSORIES HEX - Hex Louver | | | | |

| | | | |
|------|---------|------|------|
| DATE | PROJECT | FIRM | TYPE |
|------|---------|------|------|



Magneto accent module. Connects to Magneto low voltage track to provide accent lighting.

FEATURES

- Magnetically Held Fixture Designed to Be Easily Repositioned in Magneto Track On Site
- Three Beam Spreads Available
- CRI 90+ Standard; R9>50
- Glare Control Accessory Available
- Module is Dimmable Using a 0-10V Control Wired to the Magneto Track
- 2700K, 3000K, 3500K & 4000K Color Temperatures Available

APPLICATIONS Commercial Interiors, Galleries, Retail, Museums, Reception Areas, Hotels, Restaurants

CONSTRUCTION Extruded and Cast Aluminum Components | **OPTICS** Field Changeable Optic; Beam Angle of 15°, 38°, and 60° Available.

WARRANTY 5 Year Limited Warranty (Covers Standard Components) | **FINISH** Powder-Coated Black Standard. Optional White Powder-Coated Finish. Custom RAL Colors Available

FIXTURE RATINGS & CERTIFICATIONS Union Made ETL Listed Made In The USA Damp Location Rated



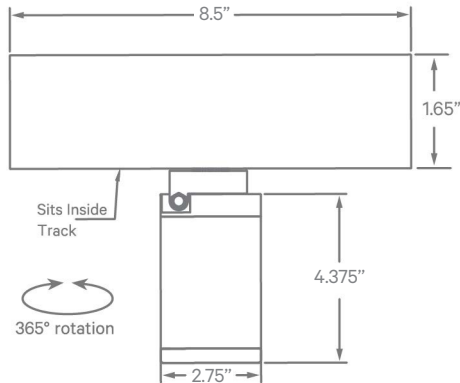
DRIVERS

For Wiring Diagrams Click [Here](#)



ELECTRICAL Powered by Magneto Track System. 0-10V Dimmable. 'Flip' Fixture in Track to Select Circuit

EXTRUSION DIMENSIONS



LED SYSTEM INFORMATION

| | Nominal System Watts | Nominal Delivered Lumens |
|-----|----------------------|--------------------------|
| MED | 8 W | 615 lm |

*Based on 'WFL' option in 3500K

ORDERING



1 - FIXTURE ID

MAG - SPT

2 - SIZE

MED

3 - COLOR TEMP

30 - 3000K/90 CRI
35 - 3500K/90 CRI

4 - LED SYSTEM

LTG1 - Standard

5 - VOLTAGE

UNV - Universal (120/277V)

6 - FINISH

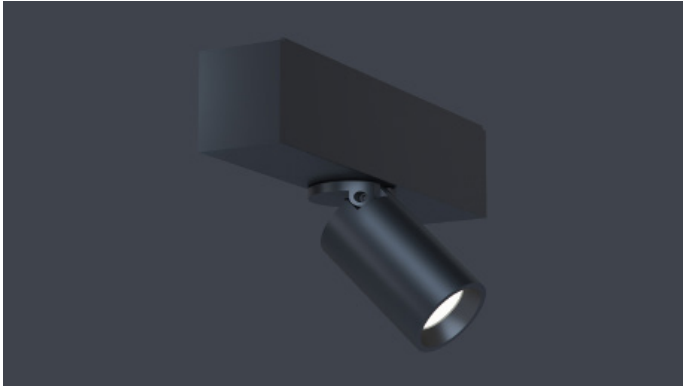
BLK - Black (Standard)
CC* - Custom Color (provide RAL#)

*Additional lead time

7 - BEAM SPREAD

SP - 15° Beam
FL - 38° Beam Spread
WFL - 60° Beam Spread



| | | | |
|------|---------|------|------|
| DATE | PROJECT | FIRM | TYPE |
|------|---------|------|------|



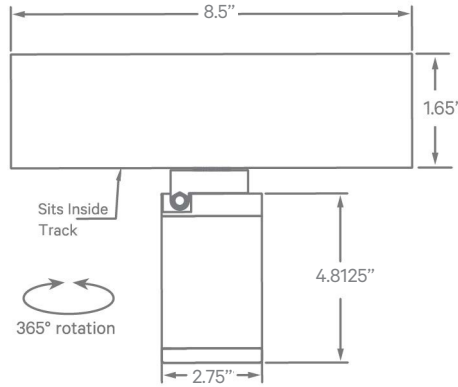
Magneto accent module. Connects to Magneto low voltage track to provide accent lighting.

FEATURES

- Magnetically Held Fixture Designed to Be Easily Repositioned in Magneto Track On Site
- Three Beam Spreads Available
- CRI 90+ Standard; R9>50
- Glare Control Accessory Available
- Module is Dimmable Using a 0-10V Control Wired to the Magneto Track
- 2700K, 3000K, 3500K & 4000K Color Temperatures Available

| | | | |
|---|--|--|---|
| APPLICATIONS | Commercial Interiors, Galleries, Retail, Museums, Reception Areas, Hotels, Restaurants | | |
| CONSTRUCTION | Extruded and Cast Aluminum Components | OPTICS | Field Changeable Optic; Beam Angle of 15°, 38°, and 60° Available. |
| WARRANTY | 5 Year Limited Warranty (Covers Standard Components) | FINISH | Powder-Coated Black Standard. Optional White Powder-Coated Finish. Custom RAL Colors Available |
| FIXTURE RATINGS & CERTIFICATIONS | Union Made ETL Listed | Made In The USA Damp Location Rated |  DRIVERS For Wiring Diagrams Click Here  |
| ELECTRICAL | Powered by Magneto Track System. 0-10V Dimmable. 'Flip' Fixture in Track to Select Circuit | | |

EXTRUSION DIMENSIONS



LED SYSTEM INFORMATION

| | Nominal System Watts | Nominal Delivered Lumens |
|-----|----------------------|--------------------------|
| LRG | 15 W | 1460 lm |

ORDERING



| | | | | | |
|------------------------------------|------------------------|---|--|--|--|
| 1 - FIXTURE ID MAG - SPT | 2 - SIZE LRG | 3 - COLOR TEMP 30 - 3000K/90 CRI 35 - 3500K/90 CRI | 4 - LED SYSTEM LTG1 - Standard | 5 - VOLTAGE UNV - Universal (120/277V) | 6 - FINISH BLK - Black (Standard) CC* - Custom Color (provide RAL#) <small>*Additional lead time</small> |
|------------------------------------|------------------------|---|--|--|--|

7 - BEAM SPREAD

- SP - 15° Beam
- FL - 24° Beam Spread
- WFL - 60° Beam Spread