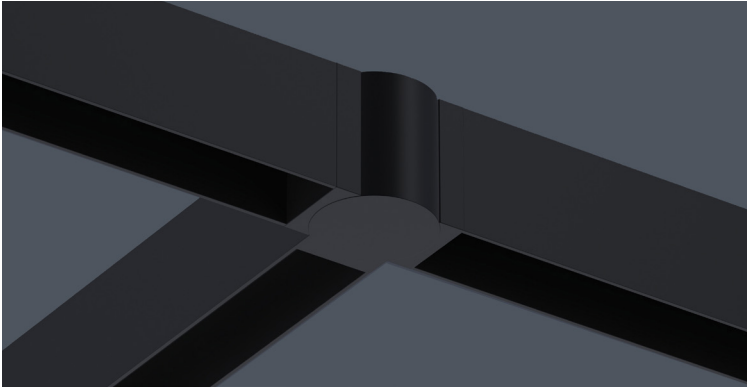


DATE

PROJECT

FIRM

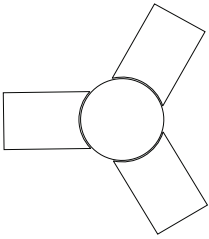
TYPE



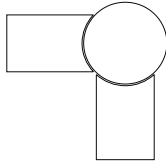
FEATURES

- 2.3" diameter connector for modular magneto track patterns
- Several connections types/directions offered
- Available in custom colors

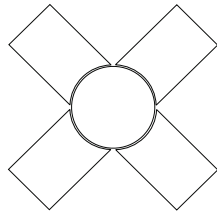
CONFIGURATIONS:



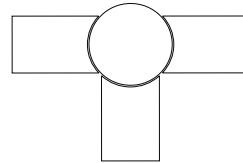
120° Y-Pattern



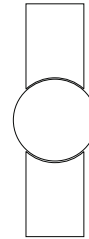
90° Corner



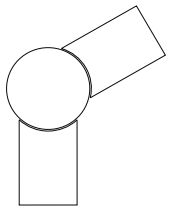
'X' Pattern



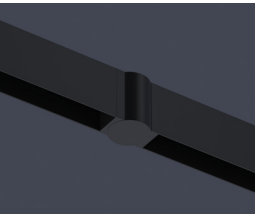
'T' Pattern



Straight



120° Corner



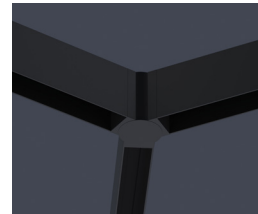
Straight



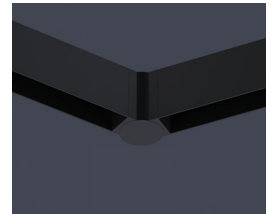
90° Corner



'X' Pattern



120° Y-Pattern



120° Corner

ORDERING



1

2

3

1 - FIXTURE ID

MAG CNCT

2 - Connector

90° - 90° Corner
 120° - 120° Corner
 Y - 120° 'Y' Pattern
 X - 'X' Pattern
 T - 'T' Pattern

3 - FINISH

BLK - Black (Standard)
 W - White
 CC - Custom Color
 (provide RAL#)

*Drawing required upon ordering