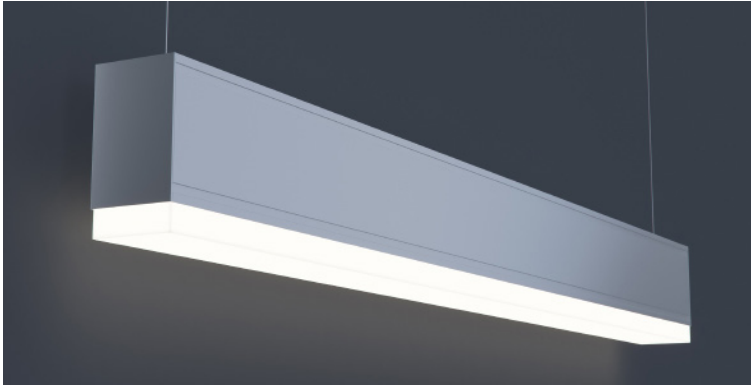


DATE _____ PROJECT _____ FIRM _____ TYPE _____



Linear, architectural luminaire with 1" drop below pop-out lens. For use in indoor applications where an LED luminaire providing continuous light is required. Suspended, surface or wall mounted installation.

FEATURES

- Available In Made To Measure Lengths Accurate Up To 1/16"
- Patterns Available (See Page 2)
- Damp Location Rated
- CRI 90+ Standard; R9>50
- 5 Year, 50,000 Hour Fixture Warranty
- 2700K, 3000K, 3500K, 4000K & 5000K Color Temperatures Available
- Available with PoE

APPLICATIONS Offices, Lobbies, Retail Stores, Classrooms, Reception Areas & Corridors

CONSTRUCTION Extruded Aluminum Housing with Die Cast Ends. Formed Steel Gear Tray **OPTICS** 1" Drop-Below, Extruded High Transmission Satin Acrylic Lens with No LED Imaging

WARRANTY 5 Year Limited Warranty (Covers Standard Components) **FINISH** Standard Powder-Coated White. Custom RAL Colors Available

FIXTURE RATINGS & CERTIFICATIONS Union Made ETL Listed Made In The USA Damp Location Rated



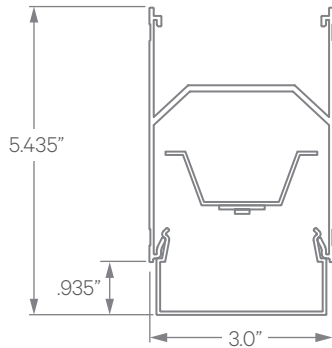
DRIVERS & SENSORS



For Wiring Diagrams and Sensor Information Click [Here](#)

ELECTRICAL Integral Driver with 0-10V Dimming Standard. Several Driver Options Available

EXTRUSION DIMENSIONS



LED SYSTEM INFORMATION

	Nominal System Watts	Nominal Delivered Lumens	Nominal Efficacy
Standard (LTG1)	7.25 W/ft	580 lm/ft	80 LPW
Low (LTG2)	5 W/ft	400 lm/ft	80 LPW
High (LTG3)	8.75 W/ft	670 lm/ft	78 LPW

Based on a 3500K luminaire using one driver. Custom outputs available; specify below.

ORDERING



- | | | | | | |
|--|--|--|--|--|---|
| <p>1 - FIXTURE ID
LS3 POL LED</p> | <p>2 - LENGTH
2 - 2 ft
4 - 4 ft
8 - 8 ft
X'-X" - Specify Length
PAT - Pattern
(Consult Factory)</p> | <p>3 - COLOR TEMP
27 - 2700K/90 CRI
30 - 3000K/90 CRI
35 - 3500K/90 CRI
40 - 4000K/90 CRI
50 - 5000K/90 CRI
TW* - Tunable White
RGBW** - RGB + 3000K
*Must use DMX or TW10 Driver
**Must use DMX Driver</p> | <p>4 - LED SYSTEM
LTG1 - Standard
LTG2 - Low
LTG3 - High
LTGC - Custom Output</p> | <p>5 - VOLTAGE
UNV - Universal
(120/277V)</p> | <p>6 - DRIVER
DB - Standard Dimming (0-10V)
DB1% - 1% Dimming (0-10V)
DB.1% - 0.1% Dimming (0-10V)
LTEA - Lutron 2-wire 1% Dimming (120V only)
LDE1 - Lutron Digital EcoSystem
LDE5 - 5 Series EcoSystem; 5% Dimming
PoE - Power over Ethernet. Consult Factory for Compatibility
DMX - For Color Tuning and RGBW (Remote)
TW10 - Dual Channel, 0-10V For Color Tuning (CCT and Intensity Control)</p> |
|--|--|--|--|--|---|

- | | | |
|---|--|---|
| <p>7 - FINISH
W - White (Standard)
BLK* - Black
CC* - Custom Color
(provide RAL number**)
CWF* - Custom Wood Finish
(provide color**)</p> | <p>8 - MOUNTING
AC - Air Craft Cable (50")
SM - Surface Mount
WM - Wall Mount
*For Perimeter Mount see LSR3 POL spec sheet.</p> | <p>9 - OTHER OPTIONS
EM 120V - Emergency Pack
EM 277V - Emergency Pack
EMCKT - Emergency Circuit</p> |
|---|--|---|

*White cord and canopy provided.
Must specify for other requests.
**See [here](#) for finish options

DATE

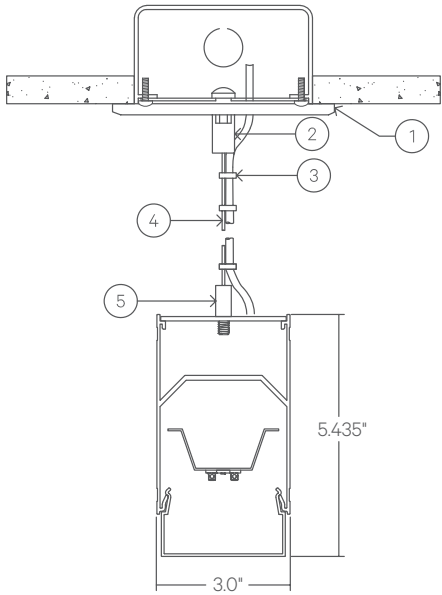
PROJECT

FIRM

TYPE

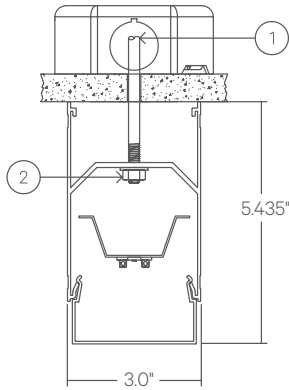
MOUNTING OPTIONS

AC - Air Craft Cable (50")



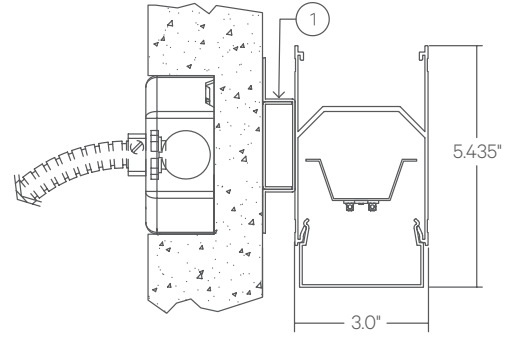
- 1 - 5" Round Canopy (Standard White Finish)
- 2 - Canopy Retainer
- 3 - SJT Cord (Standard White)
- 4 - Air Craft Cable
- 5 - Gripper

SM - Surface Mount



- 1 - Threaded Rod (not supplied)
- 2 - 1/4-20 Nut (not supplied)

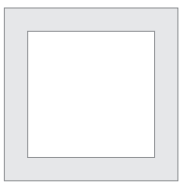
WM - Wall Mount



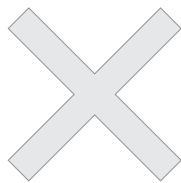
- 1 - 0.75" Wall Mount Bracket

PATTERNS

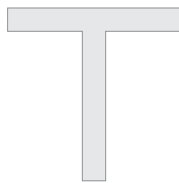
Patterns feature illuminated corners and angles. **Must consult factory for custom corners and patterns.**



Square Patterns



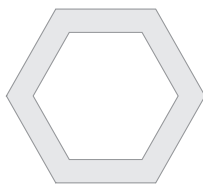
X Patterns



T Patterns

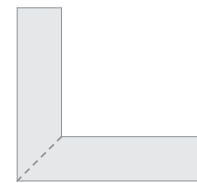


Custom Angles



Custom Patterns

LENS CUT



Mitered