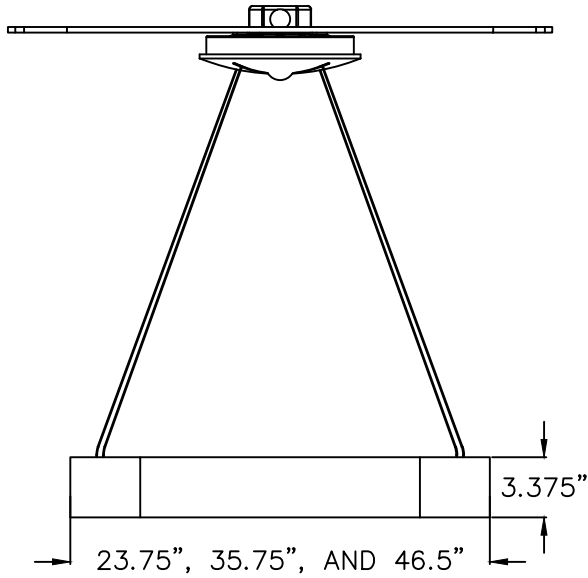


INSTALLATION GUIDE-PENDANT

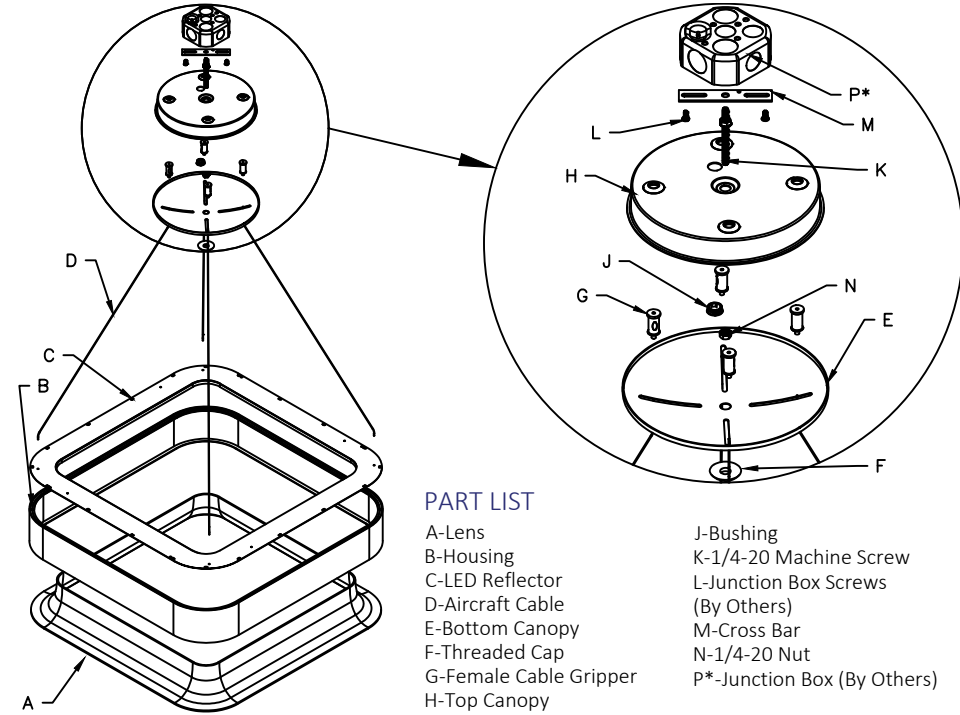


Risk of fire and electrical shock. In accordance with national local building and electrical codes, CORONET lighting fixtures must be installed by a qualified electrician. Disconnect power at electrical panel before servicing.

SIDE VIEW



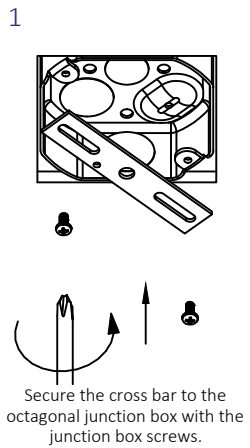
EXPLODED DETAIL



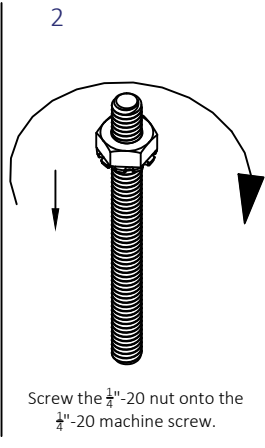
PART LIST

- | | |
|------------------------|-----------------------------|
| A-Lens | J-Bushing |
| B-Housing | K-1/4-20 Machine Screw |
| C-LED Reflector | L-Junction Box Screws |
| D-Aircraft Cable | (By Others) |
| E-Bottom Canopy | M-Cross Bar |
| F-Threaded Cap | N-1/4-20 Nut |
| G-Female Cable Gripper | P*-Junction Box (By Others) |
| H-Top Canopy | |

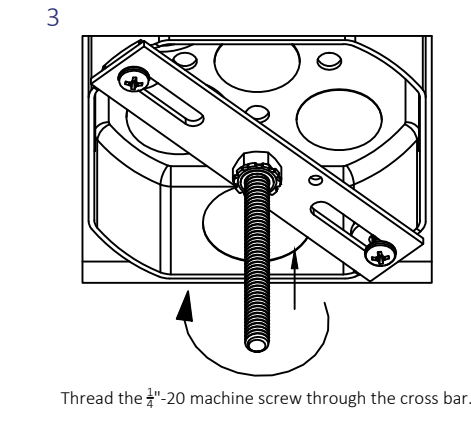
EXPLODED VIEWS ARE TO SHOW DETAIL ONLY, FIXTURES ARE SHIPPED PRE-ASSEMBLED.



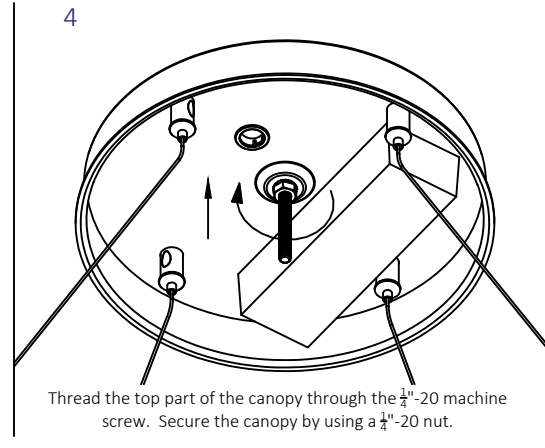
1
Secure the cross bar to the octagonal junction box with the junction box screws.



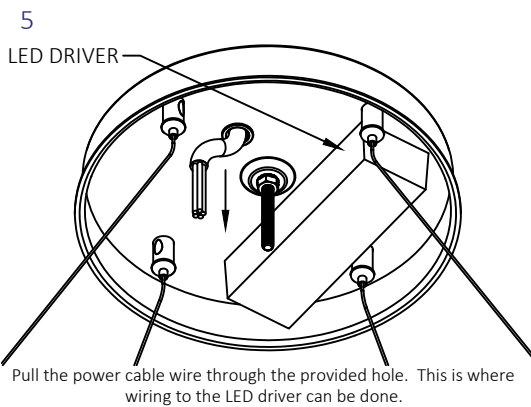
2
Screw the 1/4"-20 nut onto the 1/4"-20 machine screw.



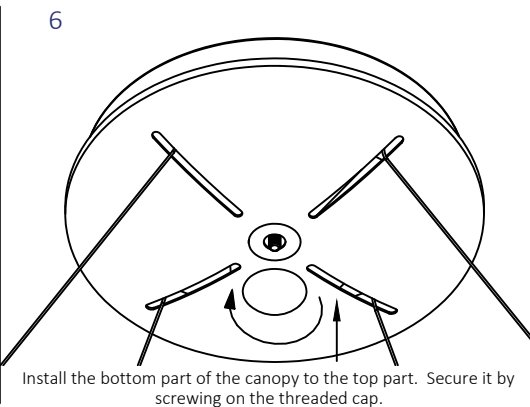
3
Thread the 1/4"-20 machine screw through the cross bar.



4
Thread the top part of the canopy through the 1/4"-20 machine screw. Secure the canopy by using a 1/4"-20 nut.



5
LED DRIVER
Pull the power cable wire through the provided hole. This is where wiring to the LED driver can be done.



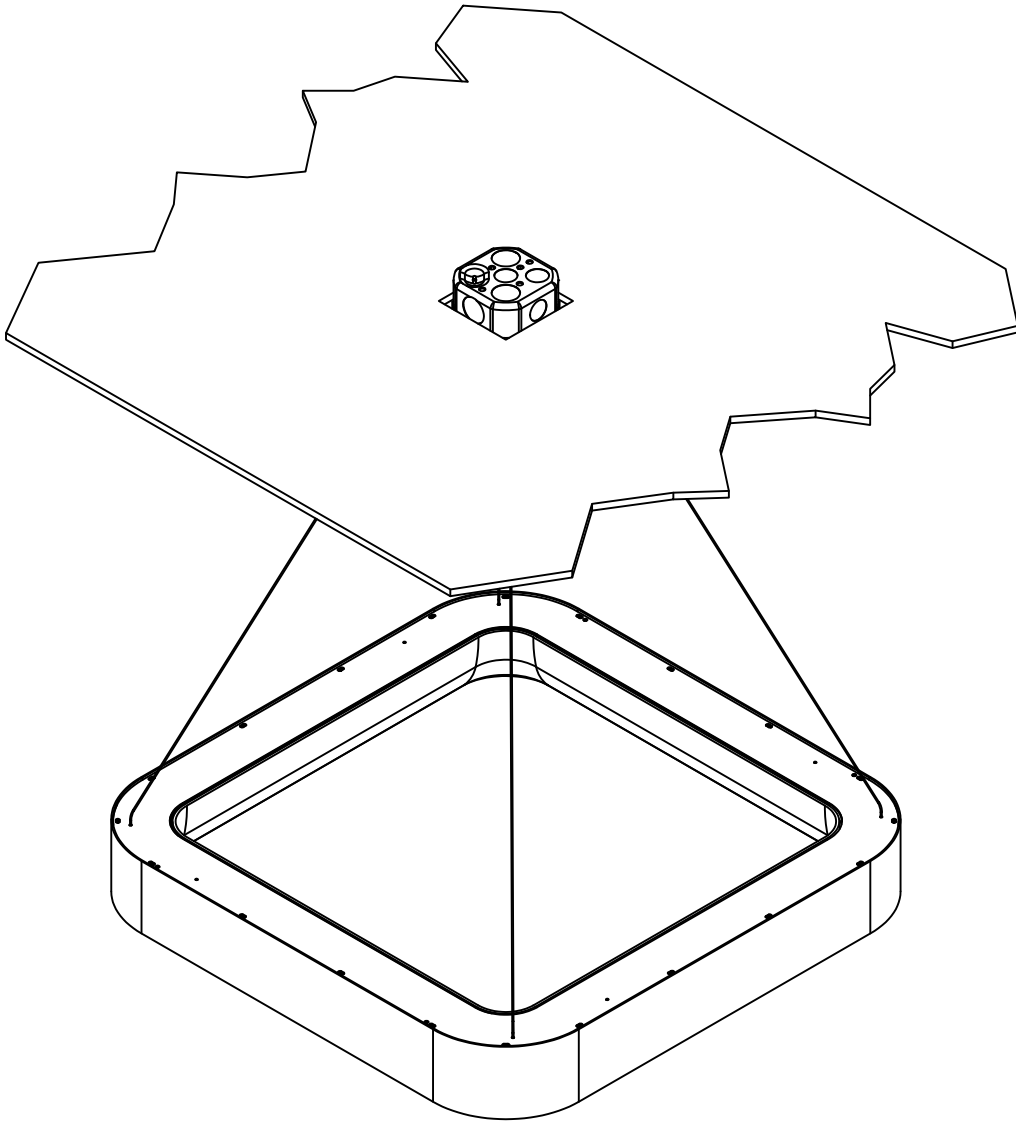
6
Install the bottom part of the canopy to the top part. Secure it by screwing on the threaded cap.

*NOTE: JUNCTION BOXES MUST BE SOLIDLY FIXED TO THE CEILING AND ATTACHED TO THE STRUCTURAL MEMBER INSIDE THE CEILING BEFORE PROCEEDING WITH INSTALLATION.



Risk of fire and electrical shock. In accordance with national local building and electrical codes, CORONET lighting fixtures must be installed by a qualified electrician. Disconnect power at electrical panel before servicing.

7



Power on the light fixture to make it functions properly in all aspects.

GENERAL INSTALLATION CONSIDERATIONS - See submittal drawings for job specific data.

Operating Temperature.....-40°C to 50°C
Operating Voltage.....110VAC-277VAC, 50Hz-60Hz
Weight.....2.8 lb/ft
Dimensions.....See submittal drawings

- Installation by a certified electrician only.
- Read and understand the installation instructions before attempting to install or use the fixture.
- Only use fixtures with voltage for which it is rated. Do not exceed the specified voltage and current input.
- Do not use the fixture if the housing, lens, or power cable is damaged.
- Ensure that the main power supply is off before installing or wiring the fixture.
- Method of wire connection to be determined by local electrical codes and regulations.
- The external flexible cable of this luminaire cannot be field replaced; if the cord is damaged, contact Coronet.
- The light source contained in this luminaire shall only be replaced by the lighting manufacturer or his service agent or a similar qualified person.

Please contact our technical support team for assistance.

NOTE: JUNCTION BOXES MUST BE SOLIDLY FIXED TO THE CEILING AND ATTACHED TO THE STRUCTURAL MEMBER INSIDE THE CEILING BEFORE PROCEEDING WITH INSTALLATION.