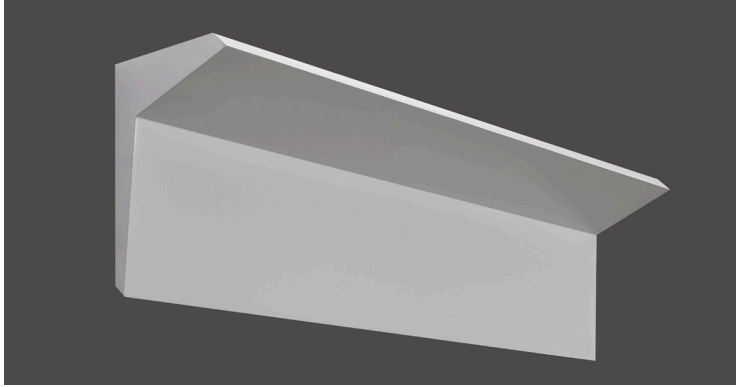


DATE	PROJECT	FIRM	TYPE
------	---------	------	------



Wall mounted extrusion designed to provide an optimal asymmetric throw on the ceiling as well as uplight for even illumination on the wall. Uses Avi-Optics. Available in custom lengths.

FEATURES

- Available In Custom Lengths & Long Runs To 1/16" Accuracy
- Asymmetric Distribution
- Damp Location Rated
- CRI 90+ Standard
- 5 Year, 50,000 Hour Fixture Warranty
- 2700K, 3000K, 3500K & 4000K Color Temperatures Available

APPLICATIONS Offices, Lobbies, Retail Stores, Reception Areas & Corridors

CONSTRUCTION Extruded Aluminum Housing | **OPTICS** Avi-Optics For Asymmetric Throw On Ceiling And Uplight

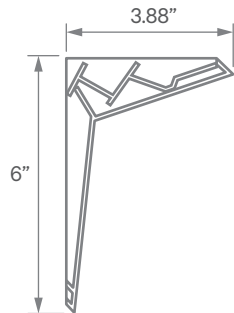
WARRANTY 5 Year Limited Warranty (Covers Standard Components) | **FINISH** Standard Powder-Coated White. Custom RAL Colors Available

FIXTURE RATINGS & CERTIFICATIONS Union Made Made In The USA
ETL Listed Damp Location Rated



ELECTRICAL Remove Driver With 0-10V 10% Dimming Standard. Lutron Drivers available (remote only). See Below for more information.
 2-Wire Forward Phase; Hi-Lume 1% Dimming, Only Available For 120V LTEA
 3-Wire EcoSystem; Hi-Lume 1% Dimming L3DA
 Digital EcoSystem; Hi-Lume 1% Dimming, 'Soft-on Fade-to-black' (Required for Daylighting) LDE1
 5 Series EcoSystem; 5% Dimming LDE5

EXTRUSION DIMENSIONS



LED SYSTEM INFORMATION

	System Watts	Delivered Lumens	Efficacy
Standard (LTG1)	7.25 W/ft	640 Lm/ft	88 Lm/W
Low (LTG2)	5 W/ft	450 Lm/ft	90 Lm/W
High (LTG3)	8.75 W/ft	750 Lm/ft	86 Lm/W

Based on a 3500K luminaire. Please consult factory for custom lumen outputs & wattage. Factory recommends 30" mounting height from ceiling for optimal output.

ORDERING



1 - FIXTURE ID FIN LED	2 - LENGTH 1 - 1 ft 2 - 2 ft 4 - 4 ft x'-x" - Custom (specify length)	3 - COLOR TEMP 27 - 2700K/90 CRI 30 - 3000K/90 CRI 35 - 3500K/90 CRI 40 - 4000K/90 CRI TW* - Tunable White RGBW* - RGB + 3000K *Must use DMX Driver (Remote)	4 - LED SYSTEM LTG1 - Standard LTG2 - Low LTG3 - High C - Custom Output (ie-C550Lm/ft)	5 - VOLTAGE UNV - Universal (120/277V)	6 - DRIVER DB - Standard 10% Dimming (0-10V) DB1% - 1% Dimming (0-10V) DB.01% - .01% Dimming (0-10V) LTEA* - Lutron 2-wire 1% Dimming L3DA* - Lutron 3-wire 1% Dimming LDE1* - Lutron Digital EcoSystem LDE5* - 5 Series EcoSystem; 5% Dimming DMX - For Color Tuning and RGBW
7 - FINISH W - White (Standard) CC - Custom Color (provide RAL#)	8 - MOUNTING WM - Wall Mount	9 - OPTIONS WH - Whips EM 120V - Emergency Pack EM 277V - Emergency Pack			

*Refer to 'Electrical' Information Above. These options are only available remote to the fixture.