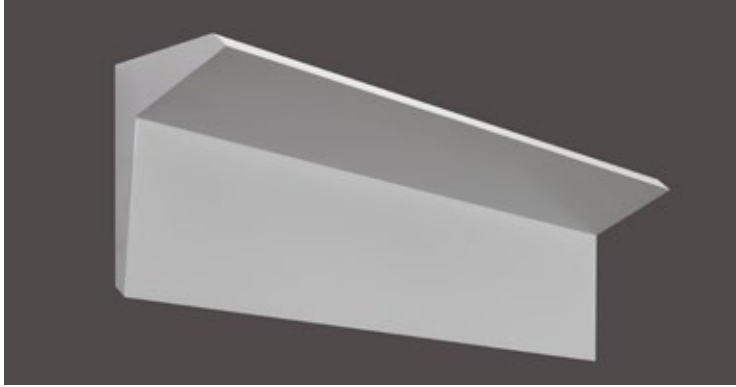


DATE	PROJECT	FIRM	TYPE
------	---------	------	------



Wall mounted extrusion designed to provide an optimal asymmetric throw on the ceiling as well as uplight for even illumination on the wall. Uses Avi-Optics. Available in custom lengths.

FEATURES

- Available In Custom Lengths & Long Runs To 1/16" Accuracy
- Asymmetric Distribution
- Damp Location Rated
- CRI 90+ Standard
- 5 Year, 50,000 Hour Fixture Warranty
- 2700K, 3000K, 3500K & 4000K Color Temperatures Available

APPLICATIONS Offices, Lobbies, Retail Stores, Reception Areas & Corridors

CONSTRUCTION Extruded Aluminum Housing | **OPTICS** Avi-Optics For Asymmetric Throw On Ceiling And Uplight

WARRANTY 5 Year Limited Warranty (Covers Standard Components) | **FINISH** Standard Powder-Coated White. Custom RAL Colors Available

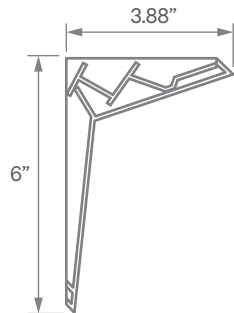
FIXTURE RATINGS & CERTIFICATIONS Union Made Made In The USA
ETL Listed Damp Location Rated



ELECTRICAL Remote Driver With 0-10V 10% Dimming Standard. Lutron Drivers available (remote only). See Below for more information.

2-Wire Forward Phase; Hi-Lume 1% Dimming, Only Available For 120V	LTEA
3-Wire EcoSystem; Hi-Lume 1% Dimming	L3DA
Digital EcoSystem; Hi-Lume 1% Dimming, 'Soft-on Fade-to-black' (Required for Daylighting)	LDE1
5 Series EcoSystem; 5% Dimming	LDE5

EXTRUSION DIMENSIONS



LED SYSTEM INFORMATION

	System Watts	Delivered Lumens	Efficacy
Standard (LTG1)	7.25 W/ft	640 Lm/ft	88 Lm/W
Low (LTG2)	5 W/ft	450 Lm/ft	90 Lm/W
High (LTG3)	8.75 W/ft	750 Lm/ft	86 Lm/W

Based on a 3500K luminaire. Please consult factory for custom lumen outputs & wattage. Factory recommends 30" mounting height from ceiling for optimal output.

ORDERING



<p>1 - FIXTURE ID FIN LED</p>	<p>2 - LENGTH 1 - 1 ft 2 - 2 ft 4 - 4 ft x'-x" - Custom (specify length)</p>	<p>3 - COLOR TEMP 27 - 2700K/90 CRI 30 - 3000K/90 CRI 35 - 3500K/90 CRI 40 - 4000K/90 CRI</p>	<p>4 - LED SYSTEM LTG1 - Standard LTG2 - Low LTG3 - High C - Custom Output (ie-C550Lm/ft)</p>	<p>5 - VOLTAGE UNV - Universal (120/277V)</p>	<p>6 - DRIVER DB - Standard 10% Dimming (0-10V) DB1% - 1% Dimming (0-10V) DB.01% - .01% Dimming (0-10V) LTEA* - Lutron 2-wire 1% Dimming L3DA* - Lutron 3-wire 1% Dimming LDE1* - Lutron Digital EcoSystem LDE5* - 5 Series EcoSystem; 5% Dimming</p>
<p>7 - FINISH W - White (Standard) CC - Custom Color (provide RAL#)</p>	<p>8 - MOUNTING WM - Wall Mount</p>	<p>9 - OPTIONS WH - Whips EM 120V - Emergency Pack EM 277V - Emergency Pack</p>			

*Refer to 'Electrical' Information Above. These options are only available remote to the fixture.