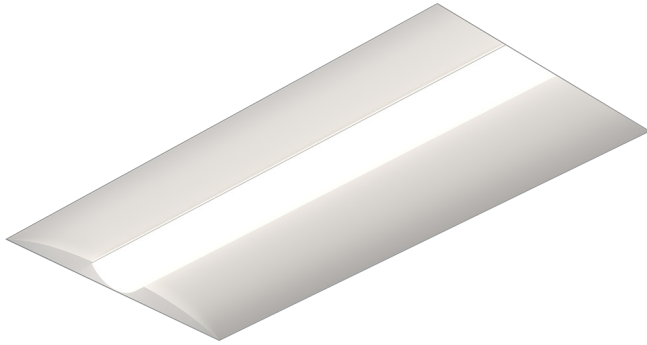


KSR1 2x4

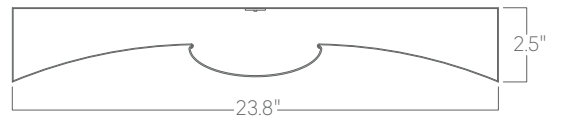


Our architectural troffers offer a variety of standard sizes and features suitable for any modern space.

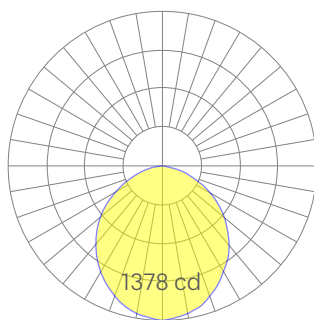
Features

- Cold-rolled steel housing
- Specifiable color temperature. CRI > 90, R9 >50
- Integral, specifiable dimmable drivers or PoE
- 5 Year, 50,000 hour warranty, damp location rated
- WELL Building Standard compatible [learn more](#)

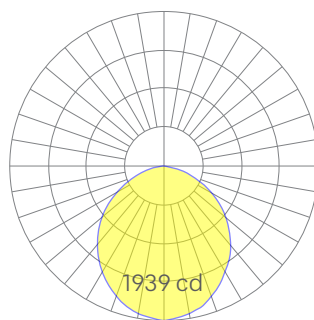
Dimensions



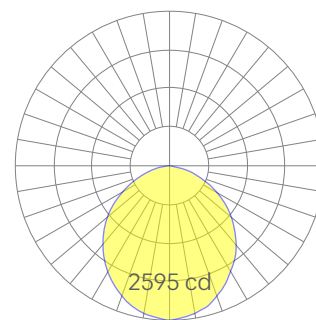
Optics



low



medium



high

Representative distribution and peak candela. For other options see order information or IES files [here](#).

KSR1 2x4

Ordering Information

For each option group below specify one option. If you don't see your preferred option listed, contact us for [help](#).

1	Fixture ID	2	Size	3	Color Temperature	4	Output
	KSR1		2x4		27 2700K/90 CRI 30 3000K/90 CRI 35 3500K/90 CRI 40 4000K/90 CRI 50 5000K/90 CRI WD Warm Dim 2200K-3000K <small>Must use WD10 driver</small> TW Tunable White 2700K-6500K <small>Must use WD10 or PSQ driver</small> RGBW30 RGB +white, 3000k <small>Remote DMX. High output unavailable.</small> RGBW35 RGB +white, 3500k <small>Remote DMX. High output unavailable.</small> RGBW40 RGB +white, 4000k <small>Remote DMX. High output unavailable.</small>		LOW Low output MED Medium output HIGH High output CUST Custom output <small>Specify Watts or lumens</small>
5	Voltage	6	Driver	7	Finish	8	Mounting
	UNV Universal (120/277V) 347V 347V <small>Available for DB Driver only</small>		DB Standard 0-10V 1% DB.1% 0-10V 0.1% ELV Reverse Phase 1% (120V only) <small>For compatible dimmers see here.</small> TRI Forward phase (120V only) <small>For compatible dimmers see here.</small> LDE Lutron Digital EcoSystem DALI DALI-2 Driver PoE Power over ethernet. TW10 Dual channel, 0-10V for tunable white. WD10 0-10V Warm Dim PSQ Lutron T-Series 2-channel 1% for tunable white DMX DMX512 <small>All DMX drivers set to default address 001 and provided in remote enclosers. Contact us for other addressing needs</small>		W White CC Custom Color <small>See finish options here.</small>		T 9/16" Tee Grid T15 15/16" Tee Grid SG Slot Grid/Interlude F Flange
9	Optics	10	Sensors/Controls	11	Circuit	12	Options
	SD Standard Diffuser		NA None ACM Acuity nLight Module Only CCS Casambi Module AWNR Lutron Athena Wireless Node Module OTHER Consult Factory		NA None EMPCK Emergency battery pack <small>May require additional power feeds.</small> EMCKT Emergency circuit <small>May require additional power feeds.</small> DAYCKT Daylight circuit <small>May require additional power feeds.</small>		NA None WH6 6ft whips preinstalled

Performance

Output ¹	Watts	Lumens
Low	40	3914
Medium	58	5510
High	80	7372

¹Based on a typically configured 90 CRI, 3500K luminaire using one driver. Custom outputs available. Please consult factory. For 4000K multiply by 1.05; for 3000K, 0.9; for 2700K, 0.92.

Technical Information



click [here](#) or scan QR code

Wiring diagrams, PoE and sensor details

KSR1 2x4

Drivers & Electrical

Integral drivers* with 0-10V Dimming standard. Several other driver options available; see ordering information.

*DMX drivers are provided in remote enclosures.

Emergency Back-Up

Emergency, battery-powered drivers are available. Emergency circuits for use with building generators are also available.

PoE (Power over Ethernet)

Compatible with virtually all PoE systems including Molex Coresync, Igor, Smartengine, Platformatics, and NuLED SPICEbox. Consult Factory for systems not listed, See [here](#) for more info.

Weight

25 lbs

Optics

Acrylic lens provides excellent diffusion, high transmission, and no LED imaging.

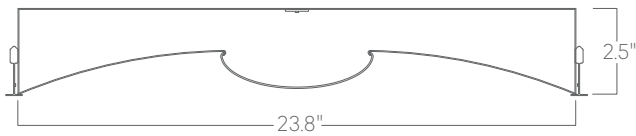
Construction

Cold-rolled steel.

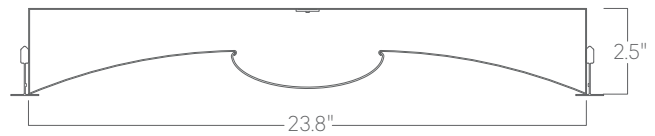
Finishes

All luminaires are finished in high quality polyester powder coating. Our standard color is white. Any RAL color may be specified.

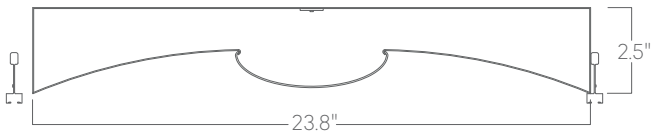
Mounting Options



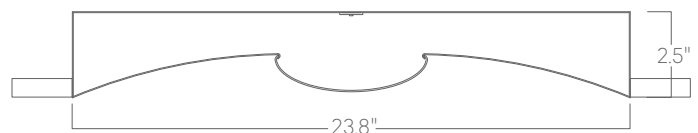
T
9/16" tee grid



T15
15/16" tee grid



SG
slot grid



F
flange