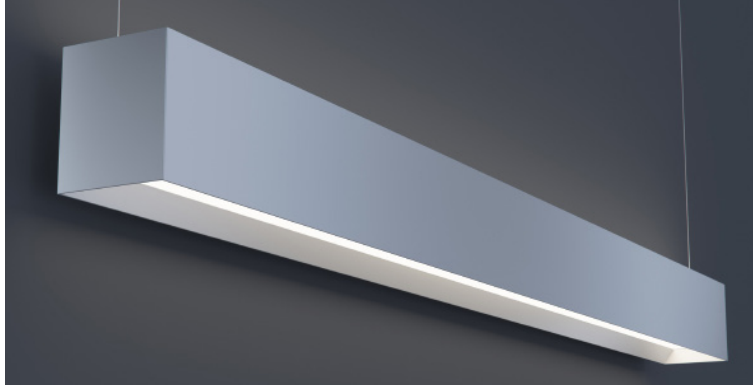


DATE	PROJECT	FIRM	TYPE
------	---------	------	------



Linear, architectural luminaire with beveled aluminum extrusion. For use in indoor applications where an LED luminaire with continuous light is required. Suspended, surface or wall mount installation.

FEATURES

- Direct and Indirect Lighting
- Available In Custom Lengths & Long Runs To 1/16" Accuracy
- Damp Location Rated
- CRI 90+ Standard
- 2700K, 3000K, 3500K, 4000K & 5000K Color Temperatures Available
- Enlighted/Wattstopper Sensors Available

APPLICATIONS Offices, Lobbies, Retail Stores, Classrooms, Reception Areas & Corridors

CONSTRUCTION Extruded Aluminum Housing With Beveled Edge | **OPTICS** Extruded Satin Acrylic Lens

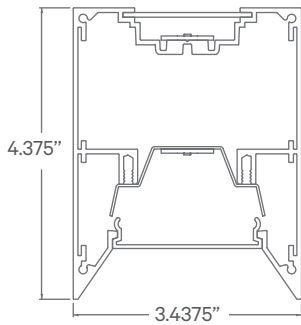
WARRANTY 5 Year Limited Warranty (Covers Standard Components) | **FINISH** Standard Powder-Coated White. Custom RAL Colors Available

FIXTURE RATINGS & CERTIFICATIONS Union Made ETL Listed | Made In The USA Damp Location Rated



ELECTRICAL Integral Driver With 0-10V 10% Dimming Standard. Several Driver Options Available. See Below For Lutron Dimming Information

EXTRUSION DIMENSIONS



LED SYSTEM INFORMATION

	Nominal System Watts		Nominal Delivered Lumens		Nominal Efficacy
	DIRECT	INDIRECT	DIRECT	INDIRECT	
Standard (LTG1)	7.5 W/ft	7.5 W/ft	705 Lm/ft	640 Lm/ft	86 Lm/ft
Low (LTG2)	5.25 W/ft	5.25 W/ft	485 Lm/ft	440 Lm/ft	87 Lm/ft
High (LTG3)	9 W/ft	9 W/ft	810 Lm/ft	730 Lm/ft	83 Lm/ft

Based on a 3500K luminaire using one driver. Please consult factory for custom lumen outputs & wattage.

ORDERING

1 - FIXTURE ID RAY4 UP/DN	2 - LENGTH 2 - 2 ft 4 - 4 ft 8 - 8 ft x'-x" - Custom (specify length) **Patterns available consult factory	3 - COLOR TEMP 27 - 2700K/90 CRI 30 - 3000K/90 CRI 35 - 3500K/90 CRI 40 - 4000K/90 CRI 50 - 5000K/90 CRI TW* - Tunable White RGBW* - RGB + 3000K *Must use DMX Driver (Remote)	4 - LED SYSTEM IN - INDIRECT LTG1 - Standard LTG2 - Low LTG3 - High C - Custom Output (ie-C550Lm/ft)	5 - VOLTAGE D - DIRECT LTG1 - Standard LTG2 - Low LTG3 - High C - Custom Output (ie-C550Lm/ft)	6 - DRIVER UNV - Universal (120/277V) DB - Standard 10% Dimming (0-10V) DB1% - 1% Dimming (0-10V) DB.01% - .01% Dimming (0-10V) LTEA - Lutron 2-wire 1% Dimming L3DA - Lutron 3-wire 1% Dimming LDE1 - Lutron Digital EcoSystem LDE5 - 5 Series EcoSystem; 5% Dimming DMX - For Color Tuning and RGBW
-------------------------------------	--	---	--	--	---

7 - FINISH W - White (Standard) CC - Custom Color (provide RAL#)	8 - MOUNTING AC - Aircraft Cable (50") SM - Surface Mount WM - Wall Mount	9 - CONTROL (Optional) EIS - Integral Sensor by Enlighted WIS - Integral Sensor by Wattstopper	10- CIRCUIT EM 120V - Emergency Pack EM 277V - Emergency Pack
---	---	---	--

DATE

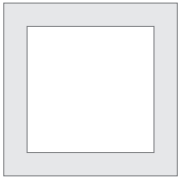
PROJECT

FIRM

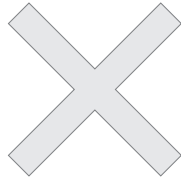
TYPE

CORNERS & PATTERNS

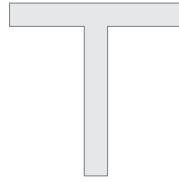
Available with illuminated corners, angles, and custom patterns. **Must consult factory for custom corners, patterns and elevations.**



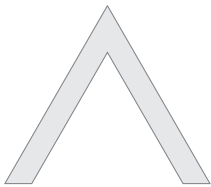
Square Patterns



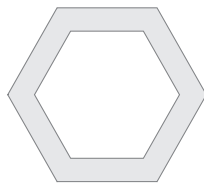
X Patterns



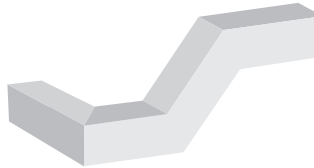
T Patterns



Custom Angles

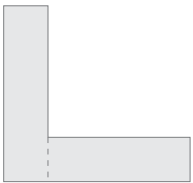


Custom Patterns

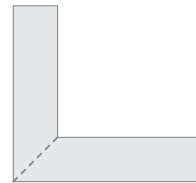


Custom Elevations

LENS CUT OPTIONS



Straight-cut



Mitered Angle