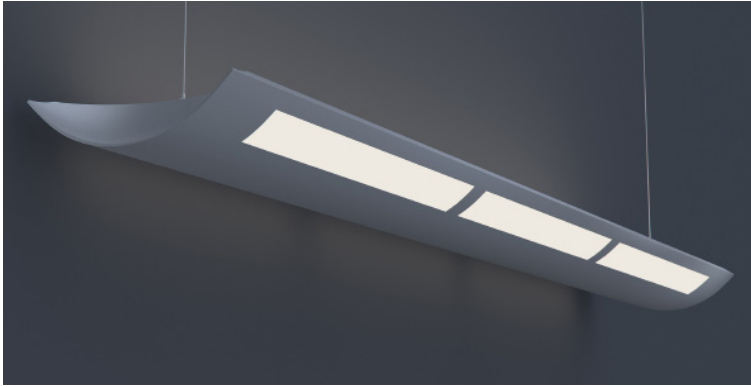


DATE _____ PROJECT _____ FIRM _____ TYPE _____



Linear, architectural luminaire with direct and indirect lighting. For use in indoor applications where an LED luminaire with continuous light is required.

FEATURES

- 25% Direct and 75% Indirect Light Distribution
- Continuous Row Mounting
- Damp Location Rated
- CRI 90+ Standard; R9>50
- 5 Year, 50,000 Hour Fixture Warranty
- 3000K, 3500K & 4000K Color Temperatures Available
- Available with PoE

APPLICATIONS Offices, Lobbies, Retail Stores, Classrooms, Reception Areas & Corridors

CONSTRUCTION Durable Cold Rolled 20 Gauge Steel | **OPTICS** Acrylic Overlay Slots

WARRANTY 5 Year Limited Warranty (Covers Standard Components) | **FINISH** Standard Powder-Coated White. Custom RAL Colors Available

FIXTURE RATINGS & CERTIFICATIONS Union Made ETL Listed | Made In The USA Damp Location Rated



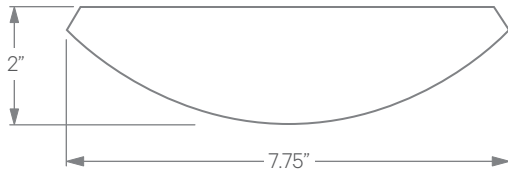
DRIVERS & SENSORS



For Wiring Diagrams and Sensor Information Click [Here](#)

ELECTRICAL Integral Driver with 0-10V Dimming Standard. Several Driver Options Available

EXTRUSION DIMENSIONS



LED SYSTEM INFORMATION

	Nominal System Watts	Nominal Delivered Lumens	Nominal Efficacy
Standard (LTG1)	15 W/ft	1,550 lm/ft	103 LPW
Low (LTG2)	10 W/ft	1,050 lm/ft	110 LPW
High (LTG3)	20 W/ft	2,100 lm/ft	100 LPW

Based on a 3500K luminaire using one driver. Custom outputs available; specify below.

ORDERING



1 - FIXTURE ID	2 - LENGTH	3 - COLOR TEMP	4 - LED SYSTEM	5 - VOLTAGE	6 - DRIVER
1050 LED	4 - 4 ft 8 - 8 ft X' - Specify Length for Continuous Row Mounting (Increments of 4 ft)	30 - 3000K/90 CRI 35 - 3500K/90 CRI 40 - 4000K/90 CRI TW* - Tunable White RGBW** - RGB + 3000K *Must use DMX or TW10 Driver **Must use DMX Driver	LTG1 - Standard LTG2 - Low LTG3 - High LTGC - Custom Output	UNV - Universal (120/277V)	DB - Standard Dimming (0-10V) DB1% - 1% Dimming (0-10V) DB.1% - 0.1% Dimming (0-10V) LTEA - Lutron 2-wire 1% Dimming (120V only) LDE1 - Lutron Digital EcoSystem LDE5 - 5 Series EcoSystem; 5% Dimming PoE - Power over Ethernet. Consult Factory for Compatibility DMX - For Color Tuning and RGBW (Remote) TW10 - Dual Channel, 0-10V For Color Tuning (CCT and Intensity Control)

7 - FINISH	8 - MOUNTING	9 - OTHER OPTIONS
W - White (Standard) CC* - Custom Color (provide RAL#)	AC - Air Craft Cable (50")	EM 120V - Emergency Pack EM 277V - Emergency Pack EMCKT - Emergency Circuit SE - Spade End Caps BN - Bullnose End Caps

*White cord and canopy provided. Must specify for other requests.

DATE

PROJECT

FIRM

TYPE

DIMENSIONS

