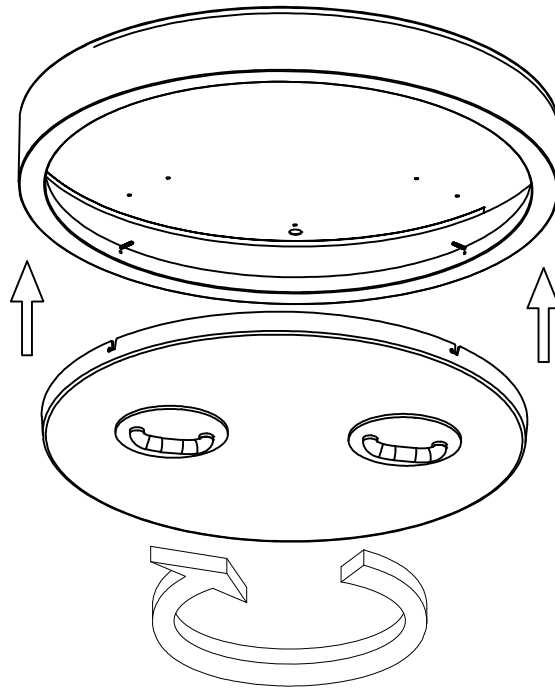




Risk of fire and electrical shock. In accordance with national local building and electrical codes, CORONET lighting fixtures must be installed by a qualified electrician. Disconnect power at electrical panel before servicing.

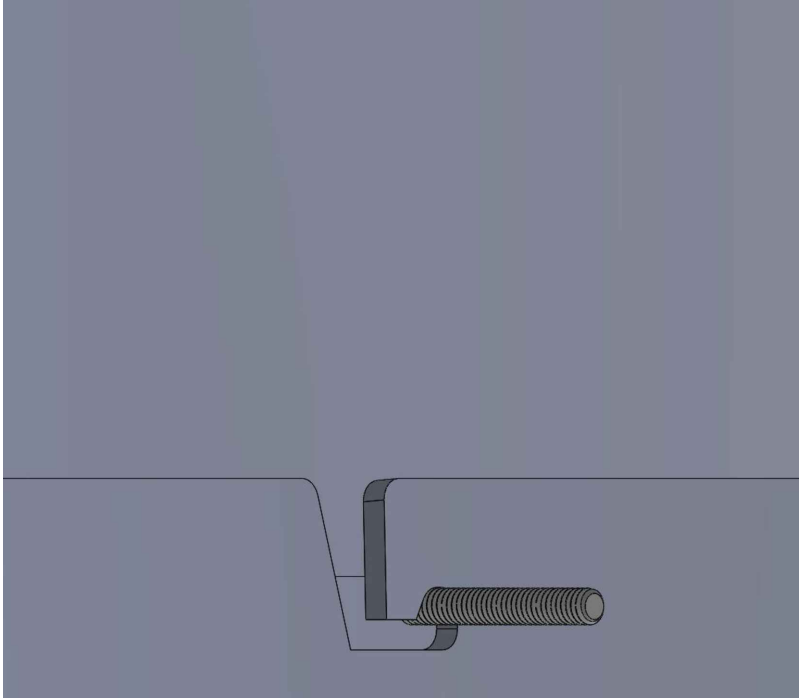
1A



Using the supplied suction cups, lift the lens into the fixture by aligning the notches in the lens with horizontal studs in the extrusion. Rotate the lens about 3/4 inch clockwise.

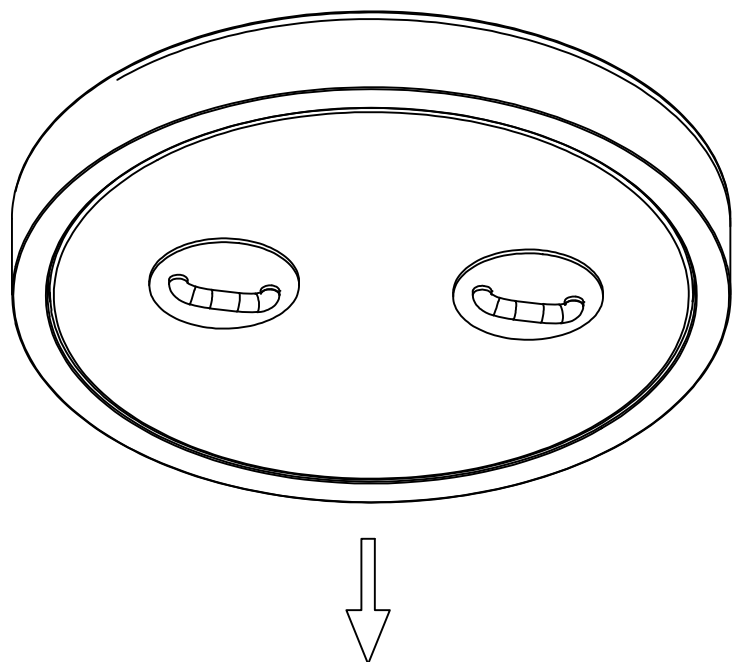
Note: Lens must be concentrically aligned within the aperture.

1B



See above of how the stud sits in the notches in the lens. The lens should drop slightly after rotating it clockwise. This signifies the lens is installed correctly, if it doesn't drop, try and install the lens again.

2



Take the suction cup and try to pull the lens out of the fixture. If the lens is installed correctly, it will not be able to be pulled out via the suction cups.