



DATE

JOB NAME

TYPE

Features	Applications
<ul style="list-style-type: none"> <li>• Knock-outs provided for convenience outlet and conduit attachment</li> <li>• Available in T5 or T5HO</li> <li>• Optional emergency pack as well as option for asymmetric, symmetric, and curved reflector.</li> </ul>	<ul style="list-style-type: none"> <li>• Office Areas</li> <li>• Retail Stores</li> <li>• Class Rooms</li> <li>• Libraries</li> <li>• Restaurants</li> </ul>

Series	Size	Lamps	Watts	Voltage	Options
SMS	2FT 3FT 4FT	1	14W/T5 24W/T5HO 21W/T5 39W/T5HO 28W/T5 54W/T5HO	120 277 UNV	EM-EM Pack 1-Lamp AS-Asymmetric Reflector SR-Symmetric Reflector CR-Curved Reflector

Ordering Example: SMS-4'-1-21WT5-UNV-EM

**Details**

**Application Features:** Specification grade fluorescent channel. For use in indoor applications where a T5 and T5HO striplight where a seamless design is required.. Available in 2', 3', and 4'.

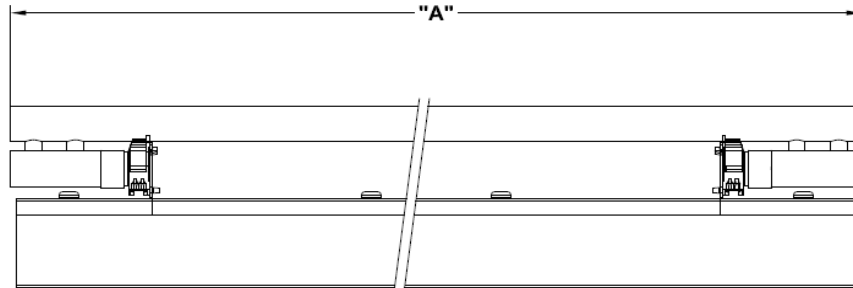
**Construction:** Die formed 20 ga. cold rolled steel housing. Sufficient knock-outs provided for convenience outlet and flexible conduit attachment.

**Finish:** Baked white enamel.

**Electronic:** Electronic ballasts are class P, thermally protected.

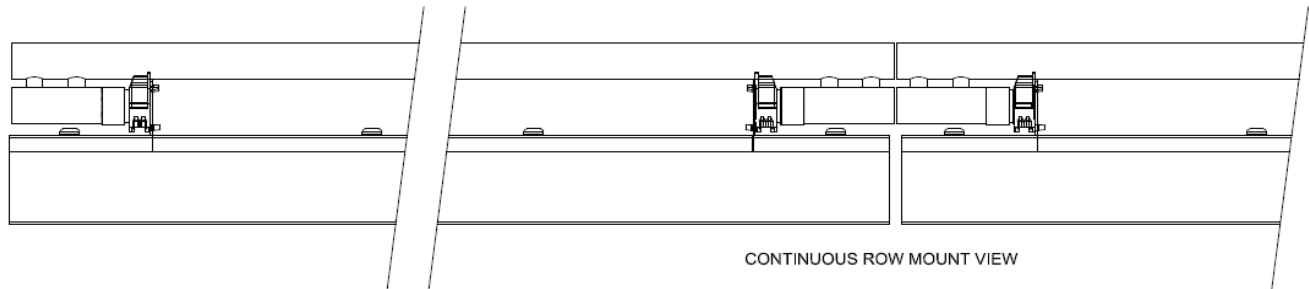
**Approvals:** Union made, UL listed, and manufactured in the US.

**Options:** Emergency Battery Backup, Asymmetric Reflector, Symmetric Reflector.



SLS LAMPING	'A' DIMENSION OAL
14W T5	582 mm
24W T5HO	22.913"
21W T5	882 mm
39W T5HO	34.724"
28W T5	1182 mm
54W T5HO	46.535"

SEE CHART FOR INDIVIDUAL LENGTH



CONTINUOUS ROW MOUNT VIEW

