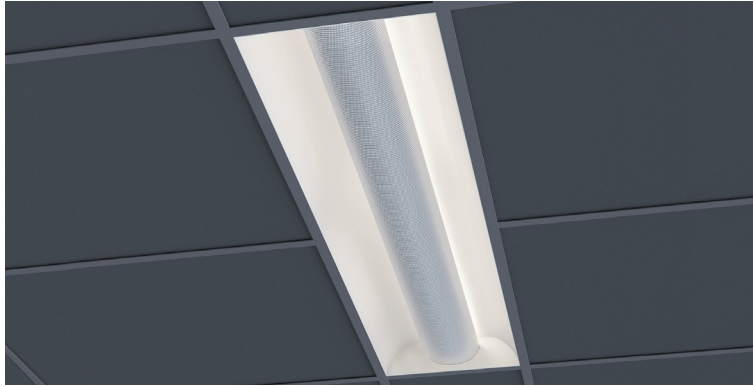


DATE _____ PROJECT _____ FIRM _____ TYPE _____



Premium grade, recessed, high performance direct/indirect architectural luminaire with single perforated metal lamp shield. For use in indoor applications where a LED luminaire with soft, low-glare illumination and modern styling is required.

FEATURES

- Damp Location Rated
- CRI 90+ Standard; R9>50
- 5 Year, 50,000 Hour Fixture Warranty
- 2700K, 3000K, 3500K, 4000K & 5000K Color Temperatures Available
- Available with PoE

APPLICATIONS Offices, Lobbies, Retail Stores, Classrooms, Reception Areas & Corridors

CONSTRUCTION Heavy Gauge, Cold Rolled Steel Housing | **OPTICS** Arched Reflector and Perforated Lamp Shield with Opal White Acrylic Overlay

WARRANTY 5 Year Limited Warranty (Covers Standard Components) | **FINISH** Standard Powder-Coated White. Custom RAL Colors Available

FIXTURE RATINGS & CERTIFICATIONS Union Made ETL Listed | Made In The USA Damp Location Rated



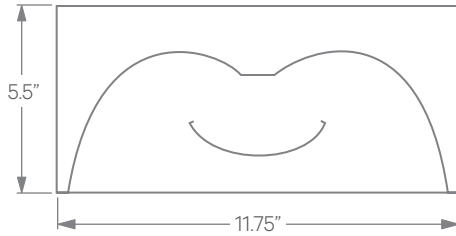
DRIVERS & SENSORS



For Wiring Diagrams and Sensor Information Click [Here](#)

ELECTRICAL Integral Driver with 0-10V Dimming Standard. Several Driver Options Available

EXTRUSION DIMENSIONS



LED SYSTEM INFORMATION

| | Nominal System Watts | Nominal Delivered Lumens | Nominal Efficacy |
|-----------------|----------------------|--------------------------|------------------|
| Standard (LTG1) | 29 W | 2,929 lm | 101 LPW |
| Low (LTG2) | 20 W | 2,040 lm | 102 LPW |
| High (LTG3) | 40 W | 3,920 lm | 98 LPW |

Based on a 3500K luminaire using one driver. Custom outputs available; specify below.

ORDERING

| 1 - FIXTURE ID | 2 - LENGTH | 3 - COLOR TEMP | 4 - LED SYSTEM | 5 - VOLTAGE | 6 - DRIVER |
|--|---|---|--|----------------------------|--|
| TDCW LED | 1x4 | 27 - 2700K/90 CRI 30 - 3000K/90 CRI 35 - 3500K/90 CRI 40 - 4000K/90 CRI 50 - 5000K/90 CRI TW* - Tunable White RGBW** - RGB + 3000K *Must use DMX or TW10 Driver **Must use DMX Driver | LTG1 - Standard LTG2 - Low LTG3 - High LTGC - Custom Output | UNV - Universal (120/277V) | DB - Standard Dimming (0-10V) DB1% - 1% Dimming (0-10V) DB.1% - 0.1% Dimming (0-10V) LTEA - Lutron 2-wire 1% Dimming (120V only) LDE1 - Lutron Digital EcoSystem LDE5 - 5 Series EcoSystem; 5% Dimming PoE - Power over Ethernet. Consult Factory for Compatibility DMX - For Color Tuning and RGBW (Remote) TW10 - Dual Channel, 0-10V For Color Tuning (CCT and Intensity Control) |
| 7 - FINISH | 8 - MOUNTING | 9 - CIRCUIT (Optional) | 10 - OTHER OPTIONS | | |
| W - White (Standard) CC - Custom Color (provide RAL#) | T - 9/16" Tee Grid TI5 - 15/16" Tee Grid SG - Slot Grid/Interlude F - Flange | EM 120V - Emergency Pack EM 277V - Emergency Pack | WH6 - 6ft Whips Preinstalled AR - Air Return | | |