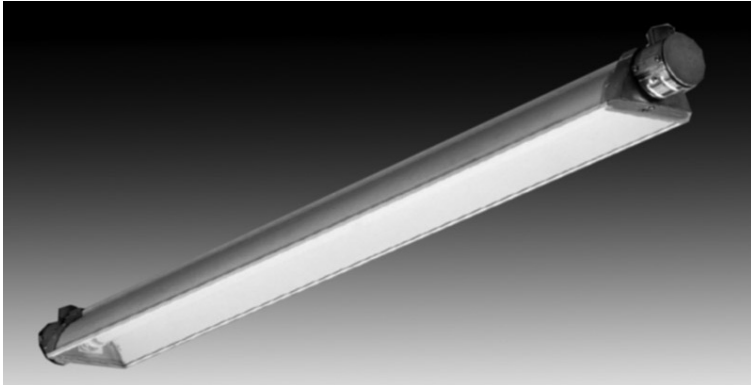




DATE _____ PROJECT _____ FIRM _____ TYPE _____



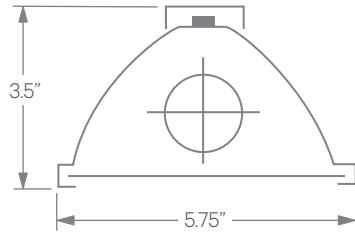
For use in exterior applications where an LED fixture with 360 degree adjustable design is required.

FEATURES

- Continuous Row Mounting
- Suitable for Outdoor Environments
- 3/4" Mounting Holes
- Wet Location Rated
- CRI 90+ Standard; R9>50
- 5 Year, 50,000 Hour Fixture Warranty
- 3000K, 3500K, 4000K & 5000K Color Temperatures Available

APPLICATIONS	Public Areas, Facades, Parking Structures, Billboards		
CONSTRUCTION	Extruded Aluminum Housing with Die Cast Ends and Adjustable Hubs	OPTICS	High Reflective White Enamel Internal Reflector with Flat, Clear, High-Impact Acrylic Lens
WARRANTY	5 Year Limited Warranty (Covers Standard Components)	FINISH	Anodized Aluminum
FIXTURE RATINGS & CERTIFICATIONS	Union Made ETL Listed	Made In The USA Wet Location Rated	 DRIVERS & SENSORS For Wiring Diagrams and Sensor Information Click Here 
ELECTRICAL	Integral Driver with 0-10V Dimming Standard. Several Driver Options Available		

EXTRUSION DIMENSIONS



LED SYSTEM INFORMATION

	Nominal System Watts	Nominal Delivered Lumens
Standard (LTG1)	7.25 W/ft	800 lm/ft
Low (LTG2)	5 W/ft	560 lm/ft
High (LTG3)	10 W/ft	1,080 lm/ft

Based on a 3500K luminaire using one driver. Custom outputs available; specify below.

ORDERING



1 - FIXTURE ID ODL LED	2 - LENGTH 4 - 4 ft 8 - 8 ft	3 - COLOR TEMP 30 - 3000K/90 CRI 35 - 3500K/90 CRI 40 - 4000K/90 CRI 50 - 5000K/90 CRI TW* - Tunable White RGBW** - RGB + 3000K <small>*Must use DMX or TW10 Driver **Must use DMX Driver</small>	4 - LED SYSTEM LTG1 - Standard LTG2 - Low LTG3 - High LTGC - Custom Output	5 - VOLTAGE UNV - Universal (120/277V)	6 - DRIVER DB - Standard Dimming (0-10V) DB1% - 1% Dimming (0-10V) DB.1% - 0.1% Dimming (0-10V) LTEA - Lutron 2-wire 1% Dimming (120V only) LDE1 - Lutron Digital EcoSystem DMX - For Color Tuning and RGBW (Remote) TW10 - Dual Channel, 0-10V For Color Tuning (CCT and Intensity Control) PSQ - Lutron 0-10V For Color Tuning
----------------------------------	---	---	---	--	---

7 - CIRCUIT (Optional)

- EM 120V - Emergency Pack
- EM 277V - Emergency Pack

DATE

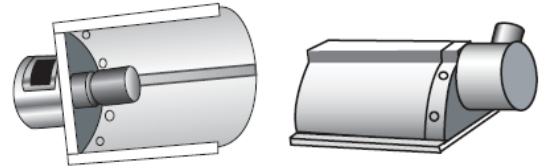
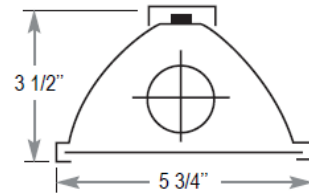
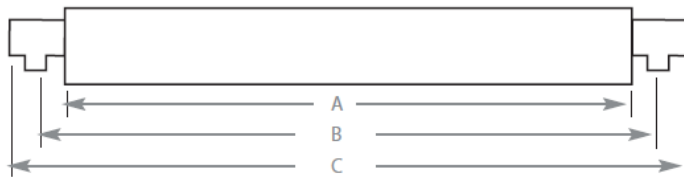
PROJECT

FIRM

TYPE

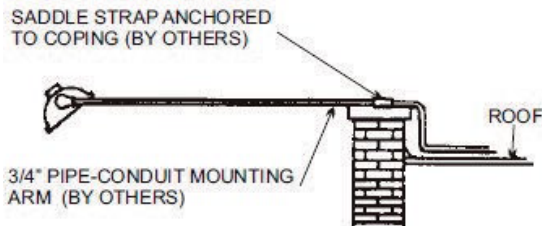
DIMENSIONS

	A	B	C
4FT	48.25"	50.375"	52.375"
8FT	96.25	98.375"	100.375"

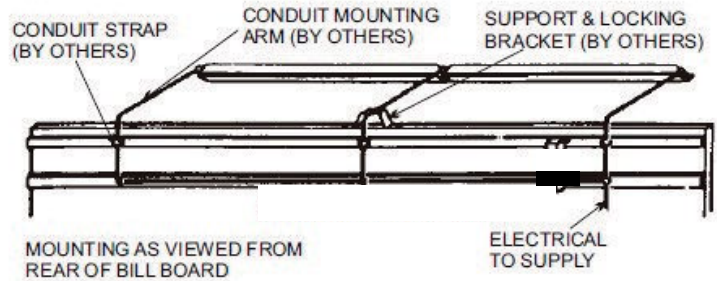


MOUNTING DETAILS

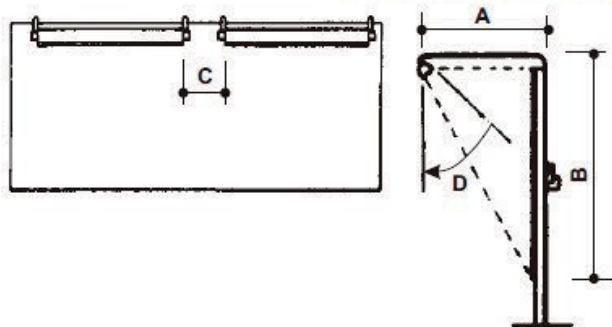
BUILDING MOUNTING



BILLBOARD MOUNTING

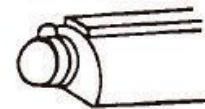


LUMINAIRE SPACING AND MOUNTING



1. Dim. C should not exceed dimensions of A.
2. Dim. B should be twice the dimension of A.
3. If Dim. B exceeds 15 ft. then luminaires should be installed at top and bottom of area to be illuminated.
4. Angle of Dim. D should be 45° if dimensions are as outlined in paragraph No. 2. If Dim. A is four times less than Dim. B then angle should be 22.5°.

INDIVIDUAL



CONTINUOUS RUN

