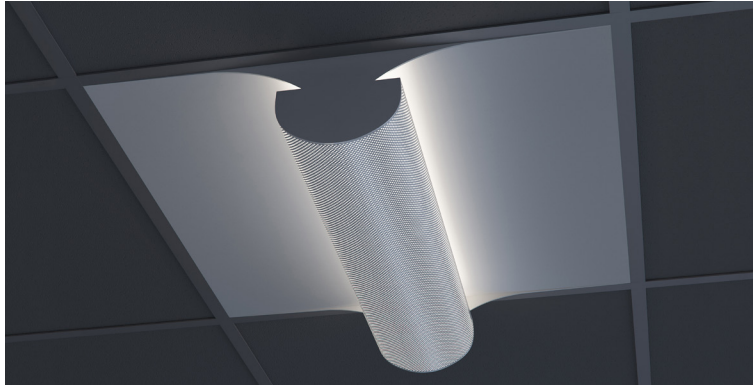


DATE _____ PROJECT _____ FIRM _____ TYPE _____



FEATURES

- Damp Location Rated
- CRI 90+ Standard; R9>50
- 5 Year, 50,000 Hour Fixture Warranty
- 2700K, 3000K, 3500K, 4000K & 5000K Color Temperatures Available
- Available with PoE- [See More](#)

APPLICATIONS Offices, Lobbies, Retail Stores, Classrooms, Reception Areas, & Corridors

FINISH Standard Powder-Coated White. Custom RAL Colors Available

CONSTRUCTION Die Formed and Spot Welded, Heavy Gauge Cold Rolled Steel Housing

OPTICS Contoured Reflector and Perforated Shield with Opal White Acrylic Overlay

FIXTURE RATINGS & CERTIFICATIONS Union Made ETL Listed Made In The USA Damp Location Rated



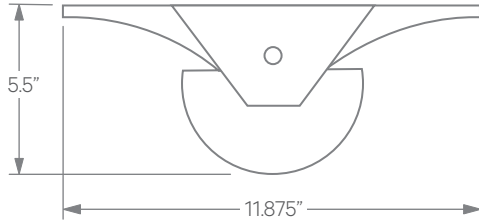
DRIVERS, SENSORS, & POE

For Wiring Diagrams, POE, and Sensor Information Click [Here](#)



ELECTRICAL Integral Driver with 0-10V Dimming Standard. Several Driver Options Available

EXTRUSION DIMENSIONS



LED SYSTEM INFORMATION

| | Nominal System Watts | Nominal Delivered Lumens | Nominal Efficacy |
|-----------------|----------------------|--------------------------|------------------|
| Standard (LTG1) | 29 W | 2,320 lm | 80 LPW |
| Low (LTG2) | 20 W | 1,648 lm | 82 LPW |
| High (LTG3) | 40 W | 3,104 lm | 77 LPW |

Based on a 90CRI, 3500K luminaire using one driver. Custom outputs available; specify below.

ORDERING



1 - FIXTURE ID

BPCW LED

2 - LENGTH

1x4

3 - COLOR TEMP

- 27 - 2700K/90 CRI
 - 30 - 3000K/90 CRI
 - 35 - 3500K/90 CRI
 - 40 - 4000K/90 CRI
 - 50 - 5000K/90 CRI
 - WD* - Warm Dim 2200K-3000K
 - TW** - Tunable White 2700K-6500K
 - RGBW30*** - RGB + 3000K
 - RGBW35*** - RGB + 3500K
- *Requires WD10 Driver
**Requires DMX or TW10 Driver
***Requires DMX Driver

4 - LED SYSTEM

- LTG1 - Standard
- LTG2 - Low
- LTG3 - High
- LTGC - Custom Output

5 - VOLTAGE

- UNV - Universal (120/277V)
 - 347V* - 347V
- *Must use DB Driver

6 - DRIVER

- DB - Standard 1% Dimming (0-10V)
- DB.1% - 0.1% Dimming (0-10V)
- ELV-TRI - 2-wire 1% Dimming (120V only) ELV and TRIAC Compatible
- LDE1 - Lutron Digital EcoSystem
- LDE5 - 5 Series EcoSystem; 5% Dimming
- DALI - DALI-2 Driver
- PoE - Power over Ethernet. Consult Factory for Compatibility
- DMX - For Color Tuning and RGBW (Remote)
- TW10 - Dual Channel, 0-10V For Color Tuning (CCT and Intensity Control)
- WD10 - 0-10V Driver For Warm Dimming

7 - FINISH

- W - White (Standard)
- CC - Custom Color (provide RAL#)

8 - MOUNTING

- SM - Surface Mount
 - PS-X* Pendant Stem (12", 18", 24", 36", 48")
- *White stems and canopy provided. Must specify for other requests.

9 - OTHER OPTIONS

- EM 120V - Emergency Pack
- EM 277V - Emergency Pack
- EMCKT - Emergency Circuit
- WH6 - 6ft Whips Preinstalled