



DATE

JOB NAME

TYPE

Features	Applications
<ul style="list-style-type: none"> <li>• Uses T5/T5HO lamps</li> </ul>	<ul style="list-style-type: none"> <li>• Office Areas</li> <li>• Retail Stores</li> <li>• Class Rooms</li> <li>• Libraries</li> <li>• Restaurants</li> </ul>

Series	Size	Lamps	Watts	Voltage	Options
TS	2FT (22.5") 3FT (34.25") 4FT (46.25") 5FT (57") 8FT (92")	1 2	14W T5 24W T5HO 21W T5 39W T5HO 28W T5 54W T5HO 35W T5 80W T5HO	120 277	EM—EM Pack DB—Dimming Ballast SC—Separate Circuit AS—Asymmetric Reflector SR—Symmetric Reflector SS—1-Lamp Side Socket DS—2-Lamp Double Side RA—2-Lamp Right Angle

Ordering Example: TS-4FT-28WT5-UNV-EM

**Details**

**Application Features:** Specification grade fluorescent channel. For use in indoor applications where a T5 or T5HO striplight with small profile, tool-less design and low cost is required. Available in lengths from 22.5" to 57".

**Construction:** Die and brake formed, 20 ga. pre-painted white cold rolled steel housing. Fixture components snap together for ease of installation and maintenance. Sufficient knock-outs are provided for convenience outlet, pull switch and flexible conduit attachment.

**Finish:** Pre-painted high reflective white.

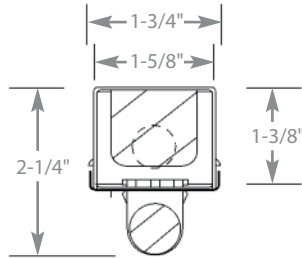
**Electrical:** Electronic ballasts are class P, thermally protected.

**Approvals:** UL Listed for damp location.

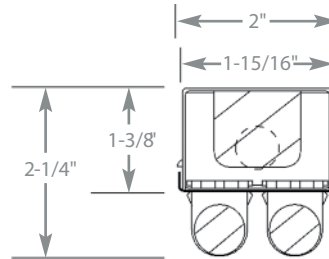
**Options:** Emergency Battery Backup, Dimming Ballast, Separate Circuit, Asymmetric Reflector and Symmetric Reflector.

DISCLAIMER: CORONET INC RESERVES THE RIGHT TO MAKE ANY DESIGN CHANGES FOR CONTINUOUS IMPROVEMENT WHICH WILL NOT AFFECT THE OVERALL APPEARANCE OR PERFORMANCE. ALL CEILINGS ARE TO BE ADEQUATELY REINFORCED BY OTHERS BEFORE INSTALLATION. ALL FIXTURES ARE TO BE WIRED BY A CERTIFIED ELECTRICIAN ONLY. THIS INFORMATION IS PROPERTY OF CORONET INC., AND THE INFORMATION IT CONTAINS MAY NOT BE USED WITHOUT ANY WRITTEN CONSENT OF CORONET INC.

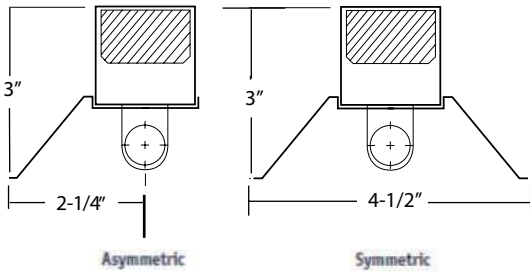
CROSS SECTION  
1-LAMP



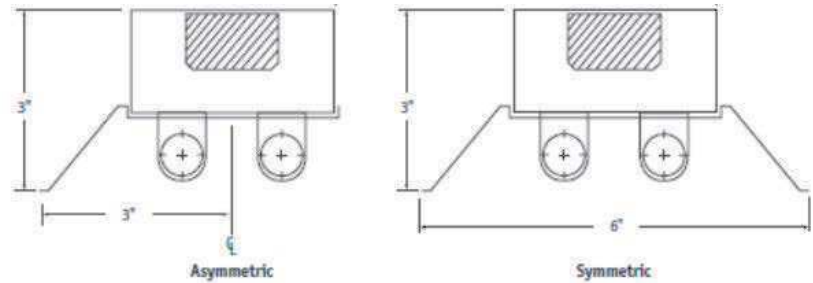
CROSS SECTION  
2-LAMP



REFLECTOR  
CROSS SECTIONS  
1-LAMP



REFLECTOR  
CROSS SECTIONS  
2-LAMP



BACKMEW

