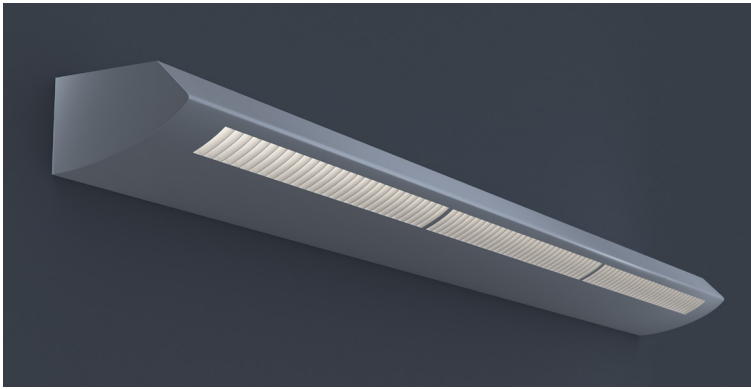


DATE _____ PROJECT _____ FIRM _____ TYPE _____



FEATURES

- 15% Direct and 85% Indirect Light Distribution
- Continuous Row Mounting
- Damp Location Rated
- CRI 90+ Standard; R9>50
- 5 Year, 50,000 Hour Fixture Warranty
- 2700K, 3000K, 3500K, 4000K & 5000K Color Temperatures Available
- Available with PoE- [See More](#)

APPLICATIONS Offices, Lobbies, Retail Stores, Classrooms, Reception Areas, & Corridors

FINISH Standard Powder-Coated White. Custom RAL Colors Available

CONSTRUCTION Durable Cold Rolled 20 ga. Steel Body. 95% Enhanced Anodized Aluminum Reflector and Housing

OPTICS Slotted Reflectors



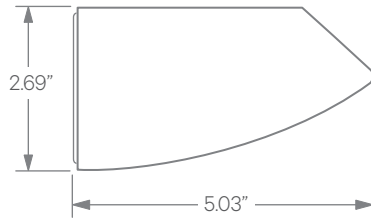
DRIVERS, SENSORS, & POE



For Wiring Diagrams, POE, and Sensor Information Click [Here](#)

ELECTRICAL Integral Driver with 0-10V Dimming Standard. Several Driver Options Available

EXTRUSION DIMENSIONS



LED SYSTEM INFORMATION

	Nominal System Watts	Nominal Delivered Lumens	Nominal Efficacy
Standard (LTG1)	15 W/ft	1,350 lm/ft	90 LPW
Low (LTG2)	10 W/ft	930 lm/ft	93 LPW
High (LTG3)	20 W/ft	1,760 lm/ft	88 LPW

Based on a 90CRI, 3500K luminaire using one driver. Custom outputs available; specify below.

ORDERING



1 - FIXTURE ID

950WM LED

2 - LENGTH

- 4 - 4 ft
- 8 - 8 ft
- X' - Specify Length for Continuous Row Mounting (Increments of 4 ft)

3 - COLOR TEMP

- 27 - 2700K/90 CRI
- 30 - 3000K/90 CRI
- 35 - 3500K/90 CRI
- 40 - 4000K/90 CRI
- 50 - 5000K/90 CRI

4 - LED SYSTEM

- LTG1 - Standard
- LTG2 - Low
- LTG3 - High
- LTGC - Custom Output

5 - VOLTAGE

- UNV - Universal (120/277V)
- 347V* - 347V
- *Must use DB Driver

6 - DRIVER

- DB - Standard 1% Dimming (0-10V)
- DB.1% - 0.1% Dimming (0-10V)
- ELV-TRI - 2-wire 1% Dimming (120V only)
ELV and TRIAC Compatible
- LDE1 - Lutron Digital EcoSystem
- LDE5 - 5 Series EcoSystem; 5% Dimming
- DALI - DALI-2 Driver
- PoE - Power over Ethernet. Consult Factory for Compatibility

7 - FINISH

- W - White (Standard)
- BLK - Black
- CC - Custom Color (provide RAL#)

8 - MOUNTING

- WM - Wall Mount

9 - OTHER OPTIONS

- EM 120V - Emergency Pack
- EM 277V - Emergency Pack
- EMCKT - Emergency Circuit

DATE

PROJECT

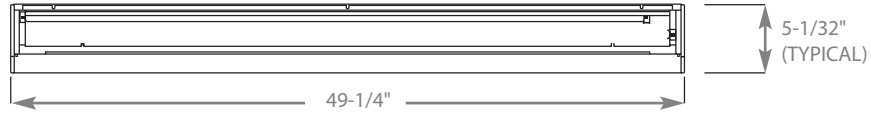
FIRM

TYPE

DIMENSIONS

4' MODEL

TOP VIEW



8' MODEL

TOP VIEW

