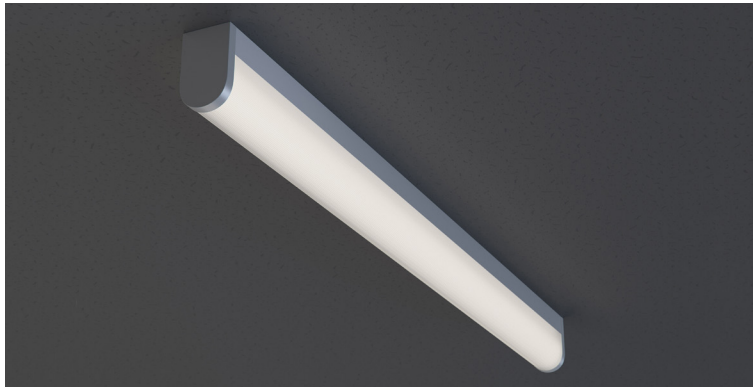


DATE _____ PROJECT _____ FIRM _____ TYPE _____



FEATURES

- Damp Location Rated
- CRI 90+ Standard; R9>50
- 5 Year, 50,000 Hour Fixture Warranty
- 2700K, 3000K, 3500K, 4000K & 5000K Color Temperatures Available
- Available with PoE- [See More](#)

APPLICATIONS Stairwells, Corridors, Bathrooms, Utility Rooms

FINISH Standard Powder-Coated White or Bright Anodized Aluminum Finish. Custom RAL Colors Available

CONSTRUCTION Heavy Gauge Steel Housing

OPTICS Ribbed, White Acrylic Diffuser

FIXTURE RATINGS & CERTIFICATIONS Union Made ETL Listed Made In The USA Damp Location Rated



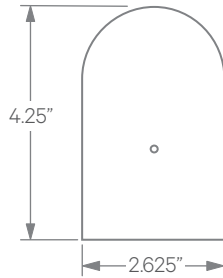
DRIVERS, SENSORS, & POE



For Wiring Diagrams, POE, and Sensor Information Click [Here](#)

ELECTRICAL Integral Driver with 0-10V Dimming Standard. Several Driver Options Available

EXTRUSION DIMENSIONS



LED SYSTEM INFORMATION

	Nominal System Watts	Nominal Delivered Lumens	Nominal Efficacy
Standard (LTG1)	7.25 W/ft	652 lm/ft	90 LPW
Low (LTG2)	5 W/ft	463 lm/ft	92 LPW
High (LTG3)	10 W/ft	872 lm/ft	87 LPW

Based on a 90CRI, 3500K luminaire using one driver. Custom outputs available; specify below.

ORDERING



1 - FIXTURE ID

FP1 LED

2 - LENGTH

- 2 - 2 ft
- 3 - 3 ft
- 4 - 4 ft

3 - COLOR TEMP

- 27 - 2700K/90 CRI
 - 30 - 3000K/90 CRI
 - 35 - 3500K/90 CRI
 - 40 - 4000K/90 CRI
 - 50 - 5000K/90 CRI
 - WD* - Warm Dim 2200K-3000K
 - TW** - Tunable White 2700K-6500K
 - RGBW30*** - RGB + 3000K
 - RGBW35*** - RGB + 3500K
- *Requires WD10 Driver
**Requires DMX or TW10 Driver
***Requires DMX Driver

4 - LED SYSTEM

- LTG1 - Standard
- LTG2 - Low
- LTG3 - High
- LTGC - Custom Output

5 - VOLTAGE

- UNV - Universal (120/277V)
 - 347V* - 347V
- *Must use DB Driver

6 - DRIVER

- DB - Standard 1% Dimming (0-10V)
- DB.1% - 0.1% Dimming (0-10V)
- ELV-TRI - 2-wire 1% Dimming (120V only) ELV and TRIAC Compatible
- LDE1 - Lutron Digital EcoSystem
- LDE5 - 5 Series EcoSystem; 5% Dimming
- DALI - DALI-2 Driver
- PoE - Power over Ethernet. Consult Factory for Compatibility
- DMX - For Color Tuning and RGBW (Remote)
- TW10 - Dual Channel, 0-10V For Color Tuning (CCT and Intensity Control)
- WD10 - 0-10V Driver For Warm Dimming

7 - FINISH

- W - White (Standard)
- AA - Anodized Aluminum Finish
- CC - Custom Color (provide RAL#)

8 - MOUNTING

- SM - Surface Mount
- WM - Wall Mount

9 - OTHER OPTIONS

- EM 120V - Emergency Pack
- EM 277V - Emergency Pack
- EMCKT - Emergency Circuit
- CEC - Chrome Ends