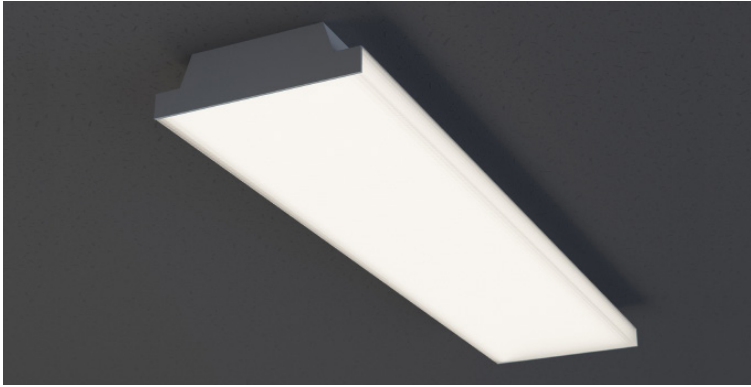


DATE _____ PROJECT _____ FIRM _____ TYPE _____



FEATURES

- Continuous Row Mounting
- Damp Location Rated
- CRI 90+ Standard; R9>50
- 5 Year, 50,000 Hour Fixture Warranty
- 2700K, 3000K, 3500K, 4000K & 5000K Color Temperatures Available
- Available with PoE- [See More](#)

APPLICATIONS Schools, Retail Stores, Office Areas, Corridors, Bathrooms, Utility Areas

FINISH Standard Powder-Coated White. Custom RAL Colors Available

CONSTRUCTION Precision-Formed Steel Housing

OPTICS Milk White Lens



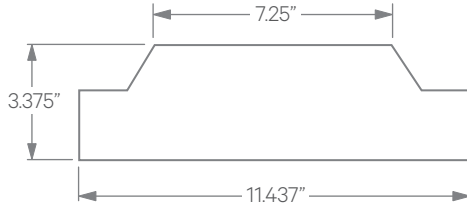
DRIVERS, SENSORS, & POE



For Wiring Diagrams, POE, and Sensor Information Click [Here](#)

ELECTRICAL Integral Driver with 0-10V Dimming Standard. Several Driver Options Available

EXTRUSION DIMENSIONS



LED SYSTEM INFORMATION

	Nominal System Watts	Nominal Delivered Lumens	Nominal Efficacy
Standard (LTG1)	7.25 W/ft	1,400 lm/ft	96 LPW
Low (LTG2)	5 W/ft	994 lm/ft	99 LPW
High (LTG3)	10 W/ft	1,872 lm/ft	93 LPW

Based on a 90CRI, 3500K luminaire using one driver. Custom outputs available; specify below.

ORDERING



1 - FIXTURE ID

A SERIES LED

2 - LENGTH

4 - 4 ft
8 - 8 ft

3 - COLOR TEMP

27 - 2700K/90 CRI
30 - 3000K/90 CRI
35 - 3500K/90 CRI
40 - 4000K/90 CRI
50 - 5000K/90 CRI
WD* - Warm Dim
2200K-3000K
TW** - Tunable White
2700K-6500K
*Requires WD10 Driver
**Requires TW10 Driver

4 - LED SYSTEM

LTG1 - Standard
LTG2 - Low
LTG3 - High
LTGC - Custom Output

5 - VOLTAGE

UNV - Universal
(120/277V)
347V* - 347V
*Must use DB Driver

6 - DRIVER

DB - Standard 1% Dimming (0-10V)
DB.1% - 0.1% Dimming (0-10V)
ELV-TRI - 2-wire 1% Dimming (120V only)
ELV and TRIAC Compatible
LDE1 - Lutron Digital EcoSystem
DALI - DALI-2 Driver
PoE - Power over Ethernet. Consult
Factory for Compatibility
TW10 - Dual Channel, 0-10V For Color
Tuning (CCT and Intensity Control)
WD10 - 0-10V Driver For Warm Dimming
PSQ - Lutron 0-10V For Color Tuning

7 - FINISH

W - White (Standard)
CC - Custom Color
(provide RAL#)

8 - MOUNTING

SM - Surface Mount
PS-X* - Pendant Stem
(6", 12", 18", 24", 36", 48")

*White stems and canopy provided. Must specify for other requests.

9 - OTHER OPTIONS

EM 120V - Emergency Pack
EM 277V - Emergency Pack
EMCKT - Emergency Circuit
WH6 - 6ft Whips
Preinstalled