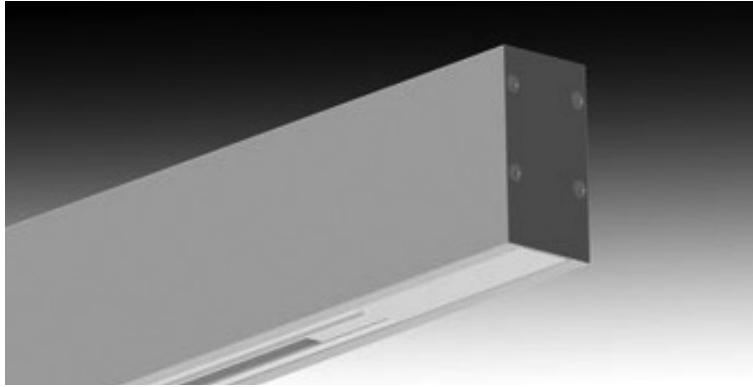





DATE _____ PROJECT _____ FIRM _____ TYPE _____



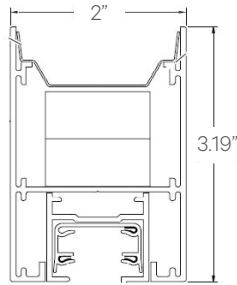
Linear, architectural luminaire with track and optional indirect lighting. Suitable for suspended installation.

FEATURES

- Available In Made To Measure Lengths Accurate Up To 1/16"
- Patterns Available (See Page 2)
- Damp Location Rated
- CRI 90+ Standard; R9>50
- 5 Year, 50,000 Hour Fixture Warranty
- 2700K, 3000K, 3500K, 4000K & 5000K Color Temperatures Available

APPLICATIONS	Offices, Lobbies, Retail Stores, Classrooms, Reception Areas & Corridors		
CONSTRUCTION	Extruded Aluminum Housing with Die Cast Ends. Formed Steel Gear Tray	OPTICS	N/A
WARRANTY	5 Year Limited Warranty (Covers Standard Components)	FINISH	Standard Powder-Coated White. Custom RAL Colors Available
FIXTURE RATINGS & CERTIFICATIONS	Union Made ETL Listed	Made In The USA Damp Location Rated	 
ELECTRICAL	Integral Driver with 0-10V Dimming Standard. Several Driver Options Available		DRIVERS For Wiring Diagrams Click Here 

EXTRUSION DIMENSIONS



LED SYSTEM INFORMATION (For Uplight Option Only)

	Nominal System Watts	Nominal Delivered Lumens	Nominal Efficacy
Standard (LTG1)	7.25 W/ft	620 lm/ft	85 LPW
Low (LTG2)	5 W/ft	430 lm/ft	86 LPW
High (LTG3)	10 W/ft	715 lm/ft	82 LPW

Based on a 3500K luminaire using one driver. Custom outputs available; specify below.

ORDERING

1 - FIXTURE ID	2 - LENGTH	3 - COMPONENT	4 - COLOR TEMP	5 - LED SYSTEM	6 - VOLTAGE	7 - DRIVER
TRX LED	2 - 2 ft 4 - 4 ft 8 - 8 ft X'-X" - Specify Length PAT - Pattern (Consult Factory)	UP - Uplight NA - No Uplight (Track Only)	27 - 2700K/90 CRI 30 - 3000K/90 CRI 35 - 3500K/90 CRI 40 - 4000K/90 CRI 50 - 5000K/90 CRI TW* - Tunable White RGBW** - RGB + 3000K *Must use DMX or TW10 Driver **Must use DMX Driver	LTG1 - Standard LTG2 - Low LTG3 - High LTGC - Custom Output	UNV - Universal (120/277V)	DB - Standard Dimming (0-10V) DB1% - 1% Dimming (0-10V) DB.1% - 0.1% Dimming (0-10V) LTEA - Lutron 2-wire 1% Dimming (120V only) LDE1 - Lutron Digital EcoSystem LDE5 - 5 Series EcoSystem; 5% Dimming PoE - Power over Ethernet. Consult Factory for Compatibility DMX - For Color Tuning and RGBW (Remote) TW10 - Dual Channel, 0-10V For Color Tuning (CCT and Intensity Control)
8 - FINISH	9 - MOUNTING	10 - OTHER OPTIONS				
W - White (Standard) BLK* - Black CC* - Custom Color (provide RAL#)	AC - Air Craft Cable (50")	EM 120V - Emergency Pack EM 277V - Emergency Pack EMCKT - Emergency Circuit				

*White cord and canopy provided. Must specify for other requests.

DATE

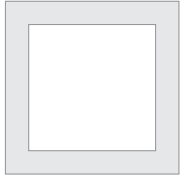
PROJECT

FIRM

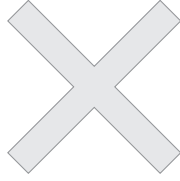
TYPE

PATTERNS

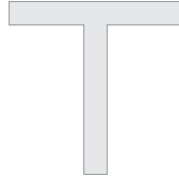
Patterns feature illuminated corners and angles. **Must consult factory for custom corners and patterns.**



Square Patterns



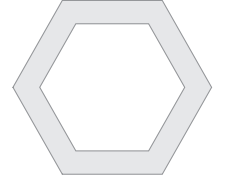
X Patterns



T Patterns



Custom Angles



Custom Patterns