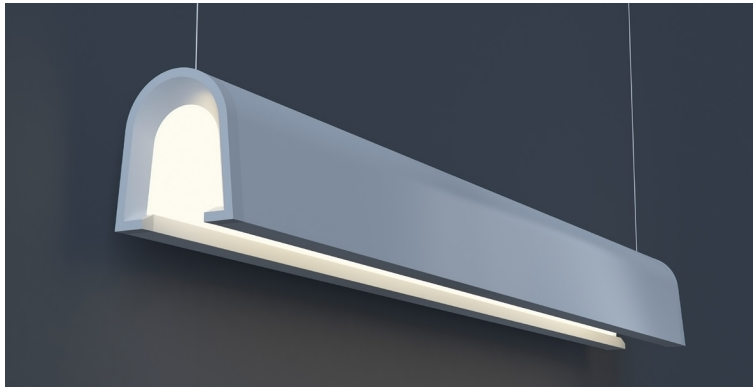


DATE \_\_\_\_\_ PROJECT \_\_\_\_\_ FIRM \_\_\_\_\_ TYPE \_\_\_\_\_



Inverted 'U' shaped fixture with indirect facing LED modules illuminating the interior of the luminaire providing optimal performance with zero glare. Also featuring continuous uplight. Suitable for suspended installation. Custom outputs and colors available.

**FEATURES**

- Available In Made To Measure Lengths Accurate To 2"
- Damp Location Rated
- CRI 90+ Standard; R9>50
- 5 Year, 50,000 Hour Fixture Warranty
- 2700K, 3000K, 3500K & 4000K Color Temperatures Available
- Available with PoE

**APPLICATIONS** Offices, Lobbies, Retail Stores, Classrooms, Reception Areas & Corridors

**CONSTRUCTION** Extruded Aluminum Housing and Reflector with Die Cast Ends | **OPTICS** 'Indirect-Direct' Optical Configuration

**WARRANTY** 5 Year Limited Warranty (Covers Standard Components) | **FINISH** Standard Powder-Coated White. Custom RAL Colors Available

**FIXTURE RATINGS & CERTIFICATIONS** Union Made ETL Listed | Made In The USA Damp Location Rated



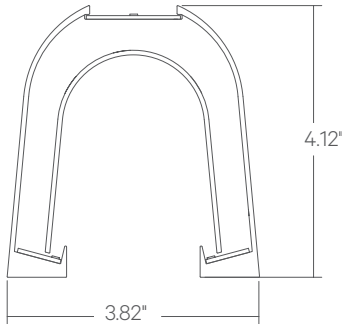
**DRIVERS & SENSORS**

For Wiring Diagrams and Sensor Information Click [Here](#)



**ELECTRICAL** Remote Driver with 'Power Over Wire' System Which Eliminates Power Feed Cord By Combining The Aircraft Cable and Power Feed

**EXTRUSION DIMENSIONS**



**LED SYSTEM INFORMATION**

|                 | Nominal System Watts |           | Nominal Delivered Lumens |           | Nominal Efficacy |
|-----------------|----------------------|-----------|--------------------------|-----------|------------------|
|                 | DIRECT               | INDIRECT  | DIRECT                   | INDIRECT  |                  |
| Standard (LTG1) | 7.5 W/ft             | 7.5 W/ft  | 750 lm/ft                | 700 lm/ft | 88 LPW           |
| Low (LTG2)      | 5.25 W/ft            | 5.25 W/ft | 520 lm/ft                | 470 lm/ft | 92 LPW           |
| High (LTG3)     | 9 W/ft               | 9 W/ft    | 830 lm/ft                | 780 lm/ft | 86 LPW           |

Based on a 3500K luminaire using one driver. Custom outputs available; specify below.

**ORDERING** 1 2 3 IN - D - 5 6 7 8 9 10

| 1 - FIXTURE ID | 2 - LENGTH   | 3 - COLOR TEMP   | 4 - LED SYSTEM  | 5 - VOLTAGE  | 6 - DRIVER  |
|----------------|--|--|---|--|---|
| U              | 2 - 2 ft<br>4 - 4 ft<br>8 - 8 ft<br>X'-X" - Specify Length | 27 - 2700K/90 CRI<br>30 - 3000K/90 CRI<br>35 - 3500K/90 CRI<br>40 - 4000K/90 CRI | IN - INDIRECT<br>LTG1 - Standard<br>LTG2 - Low<br>LTG3 - High<br>LTGC - Custom Output | D - DIRECT<br>LTG1 - Standard<br>LTG2 - Low<br>LTG3 - High<br>LTGC - Custom Output | UNV - Universal (120/277V)<br>DB - Standard Dimming (0-10V)<br>DB1% - 1% Dimming (0-10V)<br>DB.1% - 0.1% Dimming (0-10V)<br>LTEA - Lutron 2-wire 1% Dimming (120V only)<br>LDE1 - Lutron Digital EcoSystem<br>LDE5 - 5 Series EcoSystem; 5% Dimming<br>PoE - Power over Ethernet. Consult Factory for Compatibility |

| 7 - FINISH  | 8 - MOUNTING                    | 9 - OPTICS (Indirect)                                     | 10 - OTHER OPTIONS  |
|---|---------------------------------|---|---|
| W - White (Standard)<br>BLK* - Black<br>CC* - Custom Color (provide RAL#) | ACP - Power Over Aircraft Cable | SD - Standard Diffuser<br>AVI-BW - 140° AVI-OPTIC Batwing | DC - Dual Circuit (Separate Up/Dn Control)<br>EM 120V - Emergency Pack<br>EM 277V - Emergency Pack<br>EMCKT - Emergency Circuit |

\*White cord and canopy provided. Must specify for other requests.