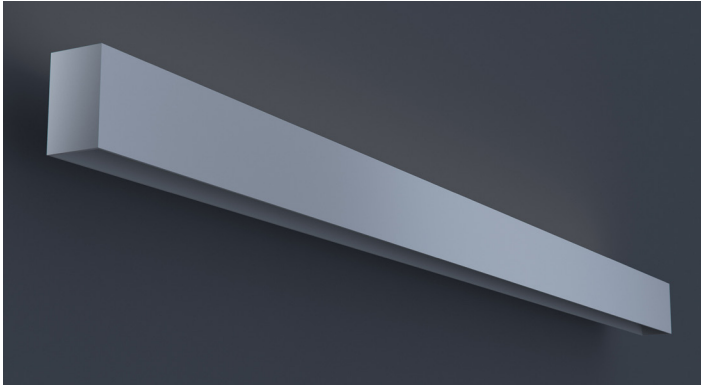




## MAGNETO Track System

MAGNETO is an innovative and dynamic track system designed for ease and flexibility. Featuring snap-in magnetic mounting that allows you to rearrange three different modules. Fully customizable to suit your specific needs.

DATE	PROJECT	FIRM	TYPE
------	---------	------	------



Surface mounted, linear low voltage configurable track system with the flexibility of magnetically mounted modules for ease of on-site adjustability and install. Configure in patterns or runs to meet design requirements.

### FEATURES

- Two Circuits to Power Magneto Modules
- Available In Made To Measure Lengths Accurate Up To 1/16"
- CRI 90+ Standard; R9>50
- Patterns Available (See Page 2)
- All Circuits Are Dimmable To 1% With 0-10V Controls. Uplight Is At 10%

**APPLICATIONS** Commercial Interiors, Galleries, Retail, Museums, Reception Areas, Hotels, Restaurants

**CONSTRUCTION** Extruded Housing with Steel End Plates **OPTICS** N/A

**WARRANTY** 5 Year Limited Warranty (Covers Standard Components) **FINISH** Powder-Coated Black Standard. Optional White Powder-Coated Finish. Custom RAL Colors Available

**FIXTURE RATINGS & CERTIFICATIONS** Union Made ETL Listed Made In The USA Damp Location Rated



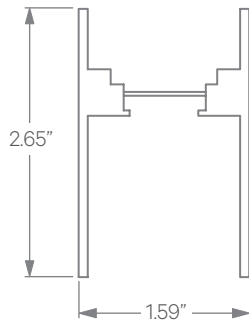
### DRIVERS & SENSORS



For Wiring Diagrams and Sensor Information Click [Here](#)

**ELECTRICAL** Dual circuit track. Remote constant voltage driver with integral 1% 0-10V dimming for track. Do not exceed 80% of driver max per circuit. 32ft maximum remote driver distance from feed. Track must be re-fed every 30ft or when driver max is reached (whichever comes first).

### EXTRUSION DIMENSIONS



<b>ORDERING</b>	1	2	3	4	5	6	7	8
-----------------	---	---	---	---	---	---	---	---

<b>1 - FIXTURE ID</b> MAGS - TRK	<b>2 - LENGTH</b> 2 - 2 ft 4 - 4 ft 8 - 8 ft X'-X" - Specify Length PAT - Pattern (Consult Factory)	<b>3 - COLOR TEMP</b> 27 - 2700K/90 CRI 30 - 3000K/90 CRI 35 - 3500K/90 CRI 40 - 4000K/90 CRI	<b>4 - VOLTAGE</b> UNV - Universal (120/277V)	<b>5 - DRIVER CKT1 (Track)</b> DR30* - 30W Driver DR60* - 60W Driver DR96* - 96W Driver <small>*Note: Drivers can be remotod up to 32'. 30' of track maximum per driver</small>	<b>6 - DRIVER CK2 (Track)</b> DR30 - 30W Driver DR60 - 60W Driver DR96 - 96W Driver
-------------------------------------	--	---	--	---	--

<b>7 - FINISH</b> BLK* - Black (Standard) W* - White CC - Custom Color (provide RAL#)	<b>8 - MOUNTING</b> SM - Surface Mount
--	---

\*Interior finish comes standard black, custom colors available. Consult factory

DATE

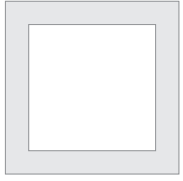
PROJECT

FIRM

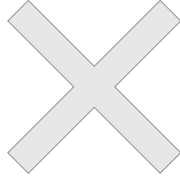
TYPE

## PATTERNS

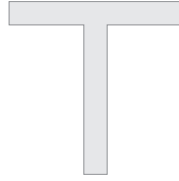
Patterns feature illuminated corners and angles. **Must consult factory for custom corners and patterns.**



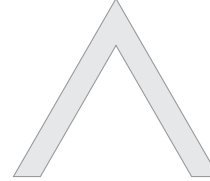
Square Patterns



X Patterns

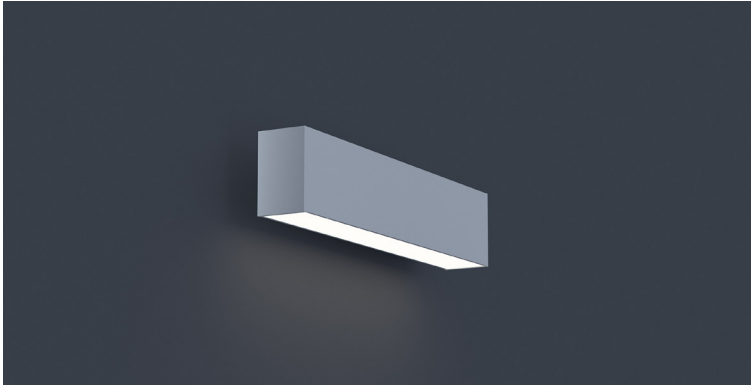


T Patterns



Custom Angles

DATE	PROJECT	FIRM	TYPE
------	---------	------	------



Magneto linear module. Connects to Magneto low voltage track to provide linear downlighting.

### FEATURES

- Magnetically Held Fixture Designed to Be Easily Repositioned in Magneto Track On Site
- Available In Lengths Up To 8' (6" Increments)
- CRI 90+ Standard; R9>50
- 5 Year, 50,000 Hour Fixture Warranty
- 2700K, 3000K, 3500K & 4000K Color Temperatures Available
- 0-10V Dimmable

**APPLICATIONS** Commercial Interiors, Galleries, Retail, Museums, Reception Areas, Hotels, Restaurants

**CONSTRUCTION** Extruded and Cast Aluminum Components | **OPTICS** Extruded High Transmission Satin Acrylic Lens with No LED Imaging

**WARRANTY** 5 Year Limited Warranty (Covers Standard Components) | **FINISH** Powder-Coated Black Standard. Optional White Powder-Coated Finish. Custom RAL Colors Available

**FIXTURE RATINGS & CERTIFICATIONS** Union Made ETL Listed | Made In The USA Damp Location Rated



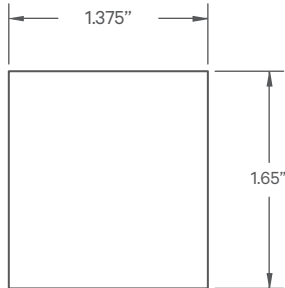
### DRIVERS & SENSORS

For Wiring Diagrams and Sensor Information Click [Here](#)



**ELECTRICAL** Powered by Magneto Track System. 0-10V Dimmable. Do Not Exceed 90W Per Circuit. 'Flip' Fixture in Track to Select Circuit

### EXTRUSION DIMENSIONS



### LED SYSTEM INFORMATION

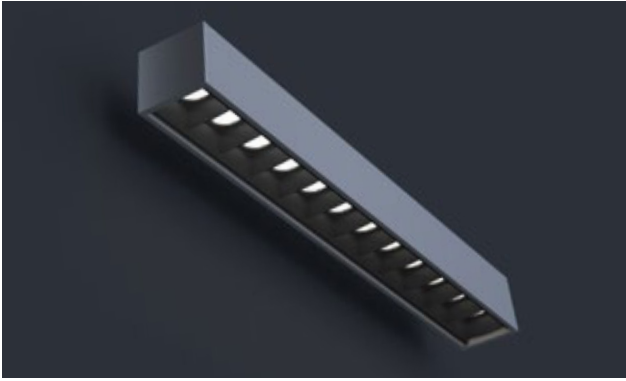
	Nominal System Watts	Nominal Delivered Lumens
Standard (LTG1)	8 W/ft	500 lm/ft
Low (LTG2)	4.5 W/ft	280 lm/ft

NOTE: Based on a 3500K luminaire



<b>1 - FIXTURE ID</b> MAG - LIN	<b>2 - LENGTH</b> 1' - 1 ft 2' - 2 ft 3' - 3 ft 4' - 4 ft 6' - 8 ft 8' - 8 ft X'-X" - Specify Length (To the nearest 6")	<b>3 - COLOR TEMP</b> 27 - 2700K/90 CRI 30 - 3000K/90 CRI 35 - 3500K/90 CRI 40 - 4000K/90 CRI	<b>4 - LED SYSTEM</b> LTG1 - Standard LTG2 - Low	<b>5 - VOLTAGE</b> UNV - Universal (120/277V)	<b>6 - FINISH</b> BLK - Black (Standard) W - White CC - Custom Color (provide RAL#)
------------------------------------	--	---	--	---	---


DATE \_\_\_\_\_ PROJECT \_\_\_\_\_ FIRM \_\_\_\_\_ TYPE \_\_\_\_\_



Magneto linear baffle module. Connects to Magneto low voltage track to provide linear downlighting.

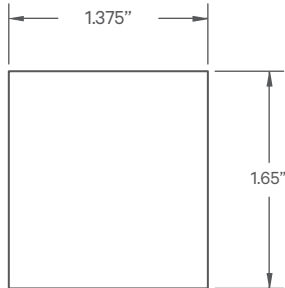
### FEATURES

- Magnetically Held Fixture Designed to Be Easily Repositioned in Magneto Track On Site
- Specifiable Optic Packages
- CRI 90+ Standard; R9>50
- Available In Custom Lengths Up To 8' (1 Foot Increments)
- 5 Year, 50,000 Hour Fixture Warranty
- 2700K, 3000K, 3500K & 4000K Color Temperatures Available

<b>APPLICATIONS</b>	Commercial Interiors, Galleries, Retail, Museums, Reception Areas, Hotels, Restaurants		
<b>CONSTRUCTION</b>	Extruded and Cast Aluminum Components. Injection Molded Poly-Carbonate Baffle	<b>OPTICS</b>	Optic Per LED; Various Beam Spreads Available. See Below
<b>WARRANTY</b>	5 Year Limited Warranty (Covers Standard Components)	<b>FINISH</b>	Powder-Coated Black Standard. Optional White Powder-Coated Finish. Custom RAL Colors Available
<b>FIXTURE RATINGS &amp; CERTIFICATIONS</b>	Union Made ETL Listed	Made In The USA Damp Location Rated	
<b>ELECTRICAL</b>	Powered by Magneto Track System. 0-10V Dimmable. Do Not Exceed 90W Per Circuit. 'Flip' Fixture in Track to Select Circuit		<b>DRIVERS &amp; SENSORS</b> For Wiring Diagrams and Sensor Information Click <a href="#">Here</a>



### EXTRUSION DIMENSIONS



### LED SYSTEM INFORMATION

	System Watts	Delivered Lumens	Efficacy
Standard (LTG1)	3 W/ft	303 lm/ft	110 LPW

\*Based on 'WFL' option

### BEAM SPREAD INFORMATION

	SP	FL	WFL
CBCP	5816	4122	3116

**ORDERING**

1 2 3 4 5 6 7 8

<b>1 - FIXTURE ID</b> MAG - BAF	<b>2 - LENGTH</b> 1' - 1 ft 2' - 2 ft 3' - 3 ft 4' - 4 ft 6' - 8 ft 8' - 8 ft X'-X" - Specify Length (To the nearest 6")	<b>3 - COLOR TEMP</b> 27 - 2700K/90 CRI 30 - 3000K/90 CRI 35 - 3500K/90 CRI 40 - 4000K/90 CRI	<b>4 - LED SYSTEM</b> LTG1 - Standard	<b>5 - VOLTAGE</b> UNV - Universal (120/277V)	<b>6 - FINISH</b> BLK - Black (Standard) CC - Custom Color (provide RAL#)
<b>7 - FINISH (Baffle)</b> BLK - Black	<b>8 - BEAM SPREAD</b> SP - 20° Beam; (Spot) FL - 26° Beam Spread; (Flood) WFL - 32° Beam Spread; (Wide Flood)				


DATE \_\_\_\_\_ PROJECT \_\_\_\_\_ FIRM \_\_\_\_\_ TYPE \_\_\_\_\_



Small, magneto accent module. Connects to Magneto low voltage track to provide accent lighting.

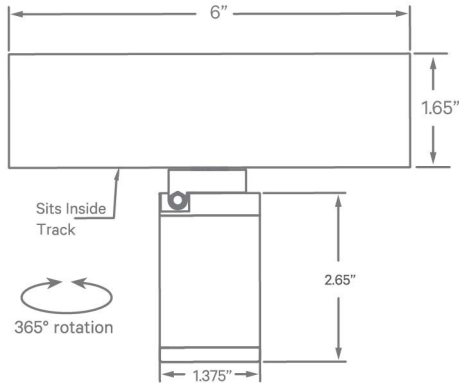
### FEATURES

- Magnetically Held Fixture Designed to Be Easily Repositioned in Magneto Track On Site
- Three Beam Spreads Available
- CRI 90+ Standard; R9>50
- Glare Control Accessory Available
- Module is Dimmable Using a 0-10V Control Wired to the Magneto Track
- 2700K, 3000K, 3500K & 4000K Color Temperatures Available

<b>APPLICATIONS</b>	Commercial Interiors, Galleries, Retail, Museums, Reception Areas, Hotels, Restaurants		
<b>CONSTRUCTION</b>	Extruded and Cast Aluminum Components	<b>OPTICS</b>	Field Changeable Optic; Beam Angle of 24°, 27°, and 30° Available. Optional Hex Louver Available
<b>WARRANTY</b>	5 Year Limited Warranty (Covers Standard Components)	<b>FINISH</b>	Powder-Coated Black Standard. Optional White Powder-Coated Finish. Custom RAL Colors Available
<b>FIXTURE RATINGS &amp; CERTIFICATIONS</b>	Union Made ETL Listed	Made In The USA Damp Location Rated	 <b>DRIVERS</b> For Wiring Diagrams <a href="#">Click Here</a>
<b>ELECTRICAL</b>	Powered by Magneto Track System. 0-10V Dimmable. 'Flip' Fixture in Track to Select Circuit		



### EXTRUSION DIMENSIONS



### LED SYSTEM INFORMATION

	Nominal System Watts	Nominal Delivered Lumens
SM	5 W	328 lm

\*Based on 'WFL' option in 3500K

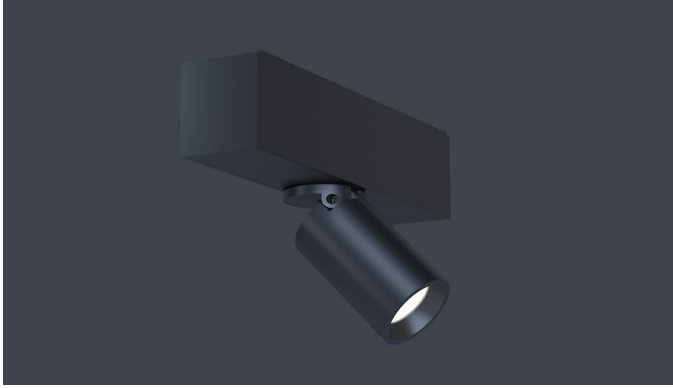
**ORDERING** 1 2 3 4 5 6 7 8

<b>1 - FIXTURE ID</b> MAG - SPT	<b>2 - SIZE</b> SM	<b>3 - COLOR TEMP</b> 27 - 2700K/90 CRI 30 - 3000K/90 CRI 35 - 3500K/90 CRI 40 - 4000K/90 CRI	<b>4 - LED SYSTEM</b> LTG1 - Standard	<b>5 - VOLTAGE</b> UNV - Universal (120/277V)	<b>6 - FINISH</b> BLK - Black (Standard) CC - Custom Color (provide RAL#)
------------------------------------	-----------------------	---	--	--	---

<b>7 - BEAM SPREAD</b> SP - 24° Beam; 1754 CBCP FL - 27° Beam Spread; 1700 CBCP WFL - 30° Beam Spread; 994 CBCP
--

<b>8 - OPTIONAL ACCESSORIES</b> HEX - Hex Louver
---


DATE	PROJECT	FIRM	TYPE
------	---------	------	------



Magneto accent module. Connects to Magneto low voltage track to provide accent lighting.

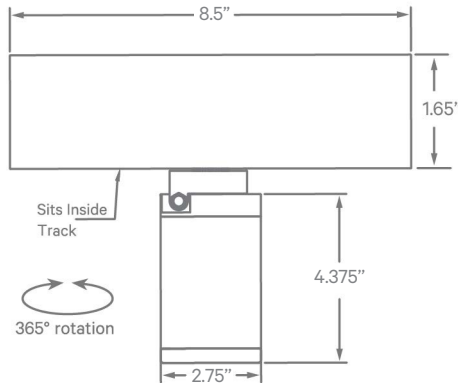
### FEATURES

- Magnetically Held Fixture Designed to Be Easily Repositioned in Magneto Track On Site
- Three Beam Spreads Available
- CRI 90+ Standard; R9>50
- Glare Control Accessory Available
- Module is Dimmable Using a 0-10V Control Wired to the Magneto Track
- 2700K, 3000K, 3500K & 4000K Color Temperatures Available

<b>APPLICATIONS</b>	Commercial Interiors, Galleries, Retail, Museums, Reception Areas, Hotels, Restaurants		
<b>CONSTRUCTION</b>	Extruded and Cast Aluminum Components	<b>OPTICS</b>	Field Changeable Optic; Beam Angle of 15°, 38°, and 60° Available.
<b>WARRANTY</b>	5 Year Limited Warranty (Covers Standard Components)	<b>FINISH</b>	Powder-Coated Black Standard. Optional White Powder-Coated Finish. Custom RAL Colors Available
<b>FIXTURE RATINGS &amp; CERTIFICATIONS</b>	Union Made ETL Listed	Made In The USA Damp Location Rated	 <b>DRIVERS</b> For Wiring Diagrams Click <a href="#">Here</a>
<b>ELECTRICAL</b>	Powered by Magneto Track System. 0-10V Dimmable. 'Flip' Fixture in Track to Select Circuit		



### EXTRUSION DIMENSIONS



### LED SYSTEM INFORMATION

	Nominal System Watts	Nominal Delivered Lumens
MED	8 W	615 lm

\*Based on 'WFL' option in 3500K

### ORDERING

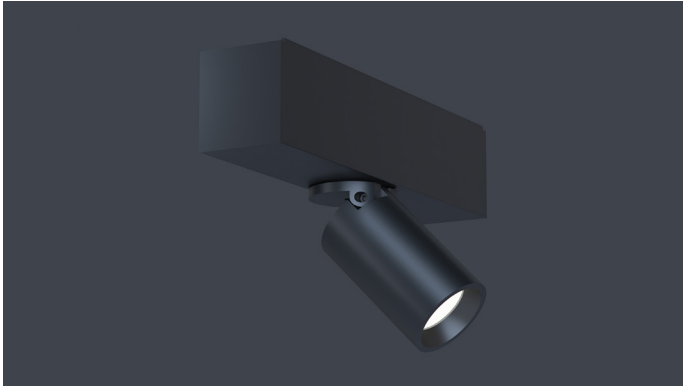


<b>1 - FIXTURE ID</b> MAG - SPT	<b>2 - SIZE</b> MED	<b>3 - COLOR TEMP</b> 30 - 3000K/90 CRI 35 - 3500K/90 CRI	<b>4 - LED SYSTEM</b> LTG1 - Standard	<b>5 - VOLTAGE</b> UNV - Universal (120/277V)	<b>6 - FINISH</b> BLK - Black (Standard) CC* - Custom Color (provide RAL#) <small>*Additional lead time</small>
------------------------------------	------------------------	---	--	--	--

### 7 - BEAM SPREAD

- SP - 15° Beam
- FL - 38° Beam Spread
- WFL - 60° Beam Spread


DATE	PROJECT	FIRM	TYPE
------	---------	------	------



Magneto accent module. Connects to Magneto low voltage track to provide accent lighting.

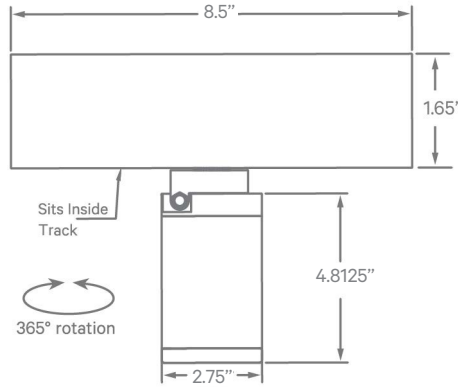
### FEATURES

- Magnetically Held Fixture Designed to Be Easily Repositioned in Magneto Track On Site
- Three Beam Spreads Available
- CRI 90+ Standard; R9>50
- Glare Control Accessory Available
- Module is Dimmable Using a 0-10V Control Wired to the Magneto Track
- 2700K, 3000K, 3500K & 4000K Color Temperatures Available

<b>APPLICATIONS</b>	Commercial Interiors, Galleries, Retail, Museums, Reception Areas, Hotels, Restaurants		
<b>CONSTRUCTION</b>	Extruded and Cast Aluminum Components	<b>OPTICS</b>	Field Changeable Optic; Beam Angle of 15°, 38°, and 60° Available.
<b>WARRANTY</b>	5 Year Limited Warranty (Covers Standard Components)	<b>FINISH</b>	Powder-Coated Black Standard. Optional White Powder-Coated Finish. Custom RAL Colors Available
<b>FIXTURE RATINGS &amp; CERTIFICATIONS</b>	Union Made ETL Listed	Made In The USA Damp Location Rated	 <b>DRIVERS</b> For Wiring Diagrams <a href="#">Click Here</a>
<b>ELECTRICAL</b>	Powered by Magneto Track System. 0-10V Dimmable. 'Flip' Fixture in Track to Select Circuit		



### EXTRUSION DIMENSIONS



### LED SYSTEM INFORMATION

	Nominal System Watts	Nominal Delivered Lumens
LRG	15 W	1460 lm

### ORDERING



<b>1 - FIXTURE ID</b> MAG - SPT	<b>2 - SIZE</b> LRG	<b>3 - COLOR TEMP</b> 30 - 3000K/90 CRI 35 - 3500K/90 CRI	<b>4 - LED SYSTEM</b> LTG1 - Standard	<b>5 - VOLTAGE</b> UNV - Universal (120/277V)	<b>6 - FINISH</b> BLK - Black (Standard) CC* - Custom Color (provide RAL#) <small>*Additional lead time</small>
------------------------------------	------------------------	---	--	--	--

### 7 - BEAM SPREAD

- SP - 15° Beam
- FL - 24° Beam Spread
- WFL - 60° Beam Spread