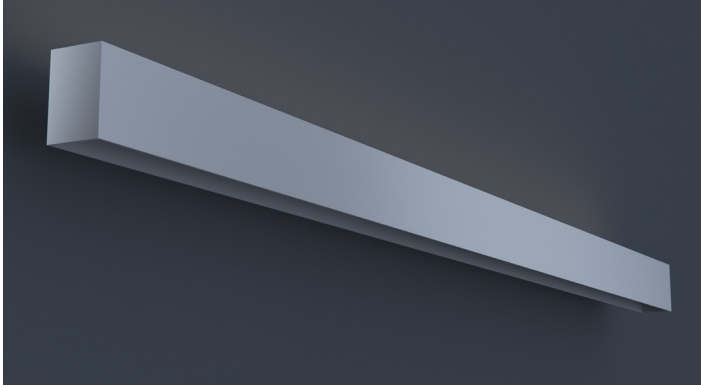


MAGNETO Track System



NOTE: Fixture components to be specified separately; see spec sheets on pages 2-6.

DATE	PROJECT	FIRM	TYPE
------	---------	------	------



Linear low voltage configurable track system with the flexibility of magnetically mounted heads for ease of on-site adjustability. Configure in patterns and runs to meet design requirements. Complete with optional indirect lighting.

FEATURES

- Two circuits to power Magneto modules
- Optional uplight circuit
- Available In Custom Lengths & Long Runs To 1/16" Accuracy
- Corners & Patterns Available (See Page 2)
- 5 Year, 50,000 Hour Fixture Warranty
- All circuits are dimmable with 0-10V controls
- Rated Life- 100,000 hours at L70; 50,000 hours at L90

APPLICATIONS Commercial Interiors, Galleries, Retail, Museums, Reception Areas, Hotels, Restaurants

CONSTRUCTION Extruded and Cast Aluminum Components | **OPTICS** Optional uplight using batwing optic.

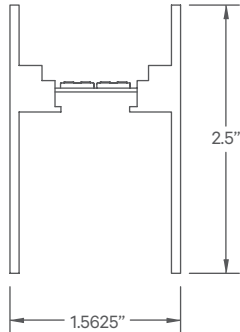
WARRANTY 5 Year Limited Warranty (Covers Standard Components) | **FINISH** Powder-Coated Black Exterior is Standard with Optional White Finish. Custom RAL Colors Available. Interior Standard Black.

FIXTURE RATINGS & CERTIFICATIONS Union Made ETL Listed | Made In The USA Dry Location Rated



ELECTRICAL Uplight and Dual Circuit track. Remote Constant Voltage Driver with Intergral 0-10V PWM Dimming Module for track. Remote Constant Current Driver for Uplight. Do not exceed 80% of driver max per Circuit.

EXTRUSION DIMENSIONS



LED SYSTEM INFORMATION (FOR OPTIONAL UPLIGHT ONLY)

	System Watts	Delivered Lumens
Standard (LTG1)	5.25 W/ft	450 Lm/ft
Low (LTG2)	3.5 W/ft	300 Lm/ft
High (LTG3)	7.25 W/ft	600 Lm/ft

Uplight Only. Based on a 3500K luminaire using one driver. Please consult factory for custom lumen outputs & wattage.

ORDERING

1 - FIXTURE ID MAG - TRK	2 - LENGTH 2 - 2 ft 4 - 4 ft 8 - 8 ft x'-x" - Custom (specify length) **Patterns available, consult factory	3 - COMPONENT UP - Uplight NA - No Uplight (Track Only)	4 - LED SYSTEM (Uplight) LTG1 - Standard LTG2 - Low LTG3 - High C - Custom Output (ie-C550Lm/ft)	5 - COLOR TEMP 27 - 2700K/90 CRI 30 - 3000K/90 CRI 35 - 3500K/90 CRI 40 - 4000K/90 CRI	6 - VOLTAGE UNV - Universal (120/277V)
------------------------------------	---	--	---	---	--

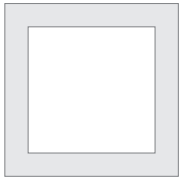
7 - DRIVER (Uplight) DB - Standard 10% Dimming (0-10V) DB1% - 1% Dimming (0-10V) DB.01% - .01% Dimming (0-10V)	8 - DRIVER CKT1 (Track) DR20- 20W Driver DR50 - 50W Driver DR96 - 96W Driver	9 - DRIVER CK2 (Track) DR20- 20W Driver DR50 - 50W Driver DR96 - 96W Driver	10 - FINISH BLK* - Black (Standard) W* - White CC - Custom Color (provide RAL#)	11 - MOUNTING AC - Air Craft Cable (50")
--	--	---	---	--

*Interior finish comes standard black, custom colors available. Consult factory.

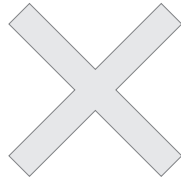
DATE	PROJECT	FIRM	TYPE
------	---------	------	------

MOUNTING OPTIONS

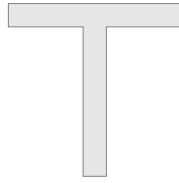
Available with illuminated corners, angles, and custom patterns. **Must consult factory for custom corners and patterns.**



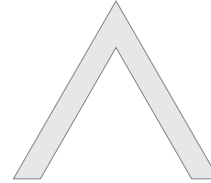
Square Patterns



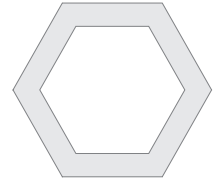
X Patterns



T Patterns

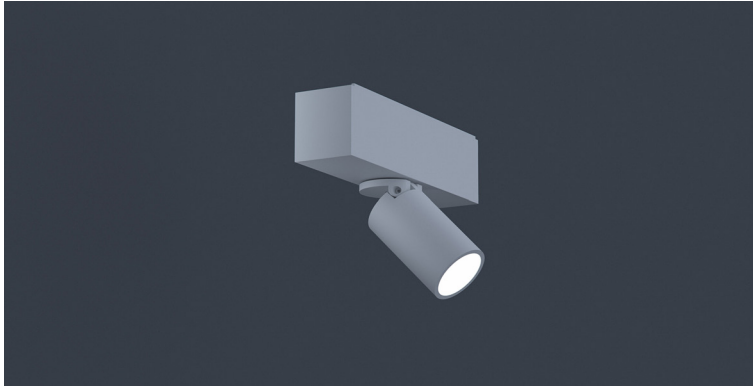


Custom Angles



Custom Patterns


DATE	PROJECT	FIRM	TYPE
------	---------	------	------



Magneto accent module. Connects to Magneto low voltage track to provide accent lighting.

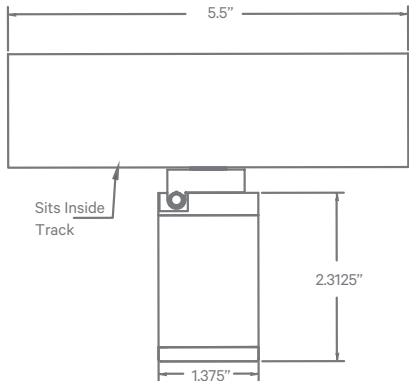
FEATURES

- Magnetically held fixture design to be easily repositioned in Magneto track on site
- Three beam spreads available
- Glare Control Accessories
- Module is dimmable using a 0-10V control wired to the Magneto track
- 2700K, 3000K, 3500K, & 4000K color temperatures available
- 5 Year, 50,000 Hour Fixture Warranty

APPLICATIONS	Commercial Interiors, Retail, Museums, Reception Areas			
CONSTRUCTION	Extruded and Cast Aluminum Components	OPTICS	Field Changeable Optic; Beam Angle of 14°, 23°, and 33° Available	
WARRANTY	5 Year Limited Warranty (Covers Standard Components)		FINISH	Powder-Coated Black with Black Power Connector. Optional White with Black Power Connector. Custom RAL Colors Available
FIXTURE RATINGS & CERTIFICATIONS	Union Made ETL Listed	Made In The USA Dry Location Rated		

ELECTRICAL Powered by Magneto Track System. 0-10V dimmable. Do not exceed 90W per Circuit. 'Flip' Fixture in Track to Select Circuit.

EXTRUSION DIMENSIONS

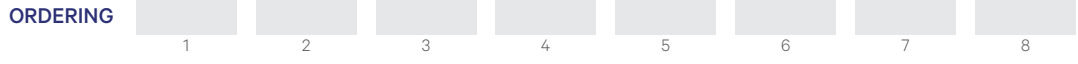


LED SYSTEM INFORMATION

	System Watts	Delivered Lumens	Efficacy
Standard (LTG1)	5 W/ft	500 Lm	100 Lm/W

BEAM SPREAD INFORMATION

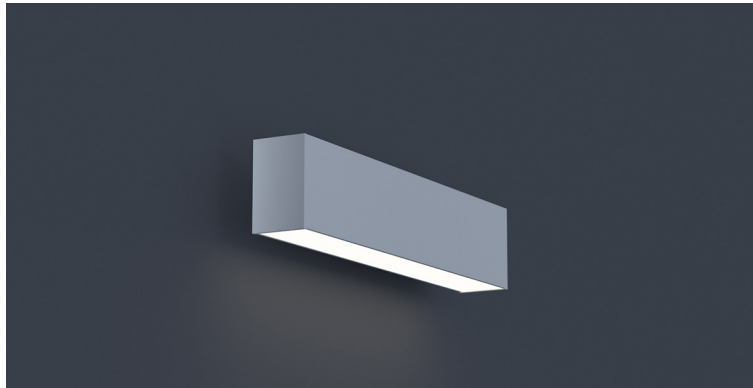
	SP (14°)	FL (23°)	WFL (33°)
CBCP	5350	1200	900



1 - FIXTURE ID MAG - SPT	2 - LED SYSTEM LTG1 - Standard	3 - COLOR TEMP 27 - 2700K/90 CRI 30 - 3000K/90 CRI 35 - 3500K/90 CRI 40 - 4000K/90 CRI	4 - VOLTAGE UNV - Universal (120/277V)	5 - FINISH BLK* - Black (Standard) W* - White CC - Custom Color (provide RAL#)
6 - BEAM SPREAD SP - 14° Beam; 5250 CBCP FL - 23° Beam Spread; 1700 CBCP WFL - 33° Beam Spread; 900 CBCP		7 - OPTIONAL ACCESSORIES HEX - Hex Louver		

*Interior finish comes standard black, custom colors available. Consult factory.

DATE	PROJECT	FIRM	TYPE
------	---------	------	------



Magneto linear module. Connects to Magneto low voltage track to provide linear downlighting.

FEATURES

- Magnetically held fixture design to be easily repositioned in Magneto track on site
- Available In Custom Lengths Up To 8' (6" Increments)
- 5 Year, 50,000 Hour Fixture Warranty
- 2700K, 3000K, 3500K, & 4000K Color Temperatures Available

APPLICATIONS	Commercial Interiors, Retail, Museums, Reception Areas		
---------------------	--	--	--

CONSTRUCTION	Extruded and Cast Aluminum Components	OPTICS	Extruded High Transmission Satin Acrylic Lens With No LED Imaging.
---------------------	---------------------------------------	---------------	--

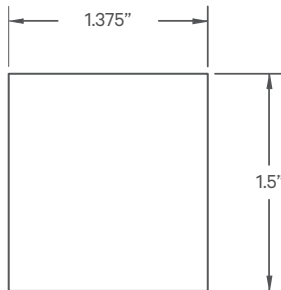
WARRANTY	5 Year Limited Warranty (Covers Standard Components)	FINISH	Standard Power-Coated Black. Custom RAL Colors Available
-----------------	--	---------------	--

FIXTURE RATINGS & CERTIFICATIONS	Union Made	Made In The USA
	ETL Listed	Dry Location Rated



ELECTRICAL	Powered by Magneto Track System. 0-10V Dimmable. Do not exceed 90W per Circuit. Circuit set by direction head is inserted.
-------------------	--

EXTRUSION DIMENSIONS



LED SYSTEM INFORMATION

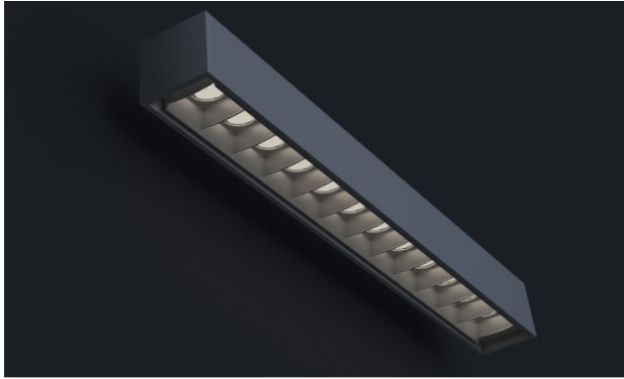
	System Watts	Delivered Lumens	Efficacy
Standard (LTG1)	6.5 W/ft	600 Lm/ft	91 Lm/W
Low (LTG2)	3.5 W/ft	310 Lm/ft	108 Lm/W

NOTE: Based on a 3500K luminaire.

ORDERING	1	2	3	4	5	6
-----------------	---	---	---	---	---	---

1 - FIXTURE ID MAG - BAF	2 - LENGTH 1' - 1 ft 2' - 2 ft 3' - 3 ft 4' - 4 ft 6' - 6 ft 8' - 8 ft x'-x" - Custom (specify length to the nearest 6")	3 - LED SYSTEM LTG1 - Standard LTG2 - Low	4 - COLOR TEMP 27 - 2700K/90 CRI 30 - 3000K/90 CRI 35 - 3500K/90 CRI 40 - 4000K/90 CRI	5 - VOLTAGE UNV - Universal (120/277V)	6 - FINISH BLK - Black (Standard) CC - Custom Color (provide RAL#)
------------------------------------	---	--	---	---	--


DATE	PROJECT	FIRM	TYPE
------	---------	------	------



Magneto linear baffle module. Connects to Magneto low voltage track to provide linear downlighting.

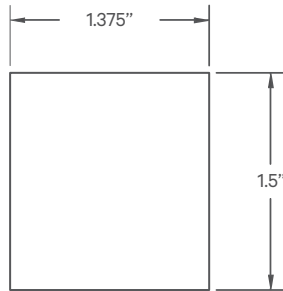
FEATURES

- Magnetically held fixture design to be easily repositioned in Magneto track on site
- Specifiable optic packages
- Available In Custom Lengths Up To 8' (6" Increments)
- 5 Year, 50,000 Hour Fixture Warranty
- 2700K, 3000K, 3500K, & 4000K Color Temperatures Available

APPLICATIONS	Commercial Interiors, Retail, Museums, Reception Areas		
CONSTRUCTION	Extruded and Cast Aluminum Components. Injection Molded Poly-Carbonate Baffle	OPTICS	Optic Per LED; Various Beam Spreads Available. See Below
WARRANTY	5 Year Limited Warranty (Covers Standard Components)	FINISH	Standard Power-Coated Black. Custom RAL Colors Available
FIXTURE RATINGS & CERTIFICATIONS	Union Made ETL Listed	Made In The USA Dry Location Rated	

ELECTRICAL Powered by Magneto Track System. 0-10V Dimmable. Do not exceed 90W per Circuit. 'Flip' Fixture in Track to Select Circuit.

EXTRUSION DIMENSIONS



LED SYSTEM INFORMATION

	System Watts	Delivered Lumens	Efficacy
Standard (LTG1)	9 W/ft	995 Lm/ft	110 Lm/W

NOTE: Based on a 3500K luminaire.

ORDERING



1 - FIXTURE ID MAG - BAF	2 - LENGTH 1' - 1 ft 2' - 2 ft 3' - 3 ft 4' - 4 ft 6' - 6 ft 8' - 8 ft x'-x" - Custom (specify length to the nearest 6")	3 - LED SYSTEM LTG1 - Standard	4 - COLOR TEMP 27 - 2700K/90 CRI 30 - 3000K/90 CRI 35 - 3500K/90 CRI 40 - 4000K/90 CRI	5 - VOLTAGE UNV - Universal (120/277V)	6 - FINISH (Housing) BLK - Black (Standard) WT - White CC - Custom Color (provide RAL)	7 - FINISH (Baffle) BLK - Black (Standard)
------------------------------------	---	--	---	---	---	--

8 - BEAM SPREAD

- SP - 17° Beam; 5250 CBCP (Spot)
- FL - 30° Beam Spread; 1700 CBCP (Flood)
- WFL - 60° Beam Spread; 900 CBCP (Wide Flood)