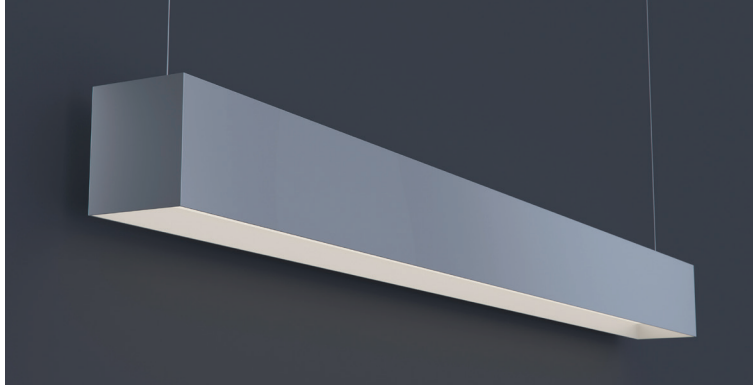


DATE	PROJECT	FIRM	TYPE
------	---------	------	------



Linear, architectural luminaire with regressed lens. For indoor applications where an LED luminaire providing continuous light is required. Suitable for suspended, surface or wall mount installation. For custom mounting consult factory.

### FEATURES

- Available In Custom Lengths & Long Runs To 1/16" Accuracy
- Corners & Patterns Available (See Page 2)
- Damp Location Rated
- CRI 90+ Standard
- 5 Year, 50,000 Hour Fixture Warranty
- 2700K, 3000K, 3500K, 4000K & 5000K Color Temperatures Available
- Enlighted/Wattstopper Sensors Available

**APPLICATIONS** Offices, Lobbies, Retail Stores, Classrooms, Reception Areas & Corridors

**CONSTRUCTION** Extruded Aluminum Housing And Steel End Caps With 1" Regressed Lens. Formed Steel Gear Tray

**OPTICS** Extruded High Transmission Satin Acrylic Lens With No LED Imaging

**WARRANTY** 5 Year Limited Warranty (Covers Standard Components)

**FINISH** Standard Powder-Coated White. Custom RAL Colors Available

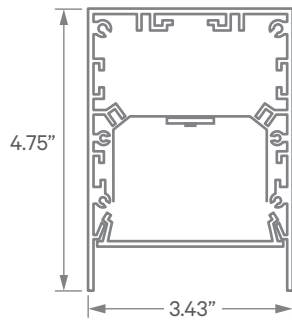
**FIXTURE RATINGS & CERTIFICATIONS** Union Made ETL Listed Made In The USA Damp Location Rated



**ELECTRICAL** Integral Driver With 0-10V 10% Dimming Standard. Several Driver Options Available. See Below For Lutron Dimming Information

2-Wire Forward Phase; Hi-Lume 1% Dimming, Only Available For 120V	LTEA
3-Wire EcoSystem; Hi-lume 1% Dimming	L3DA
Digital EcoSystem; Hi-lume 1% Dimming, 'Soft-on Fade-to-black' (Required for Daylighting)	LDE1
5 Series EcoSystem; 5% Dimming	LDE5

### EXTRUSION DIMENSIONS



### LED SYSTEM INFORMATION

	Nominal System Watts	Nominal Delivered Lumens	Nominal Efficacy
Standard (LTG1)	7.25 W/ft	625 Lm/ft	86 Lm/W
Low (LTG2)	5 W/ft	430 Lm/ft	86 Lm/W
High (LTG3)	8.75 W/ft	715 Lm/ft	81 Lm/W

Based on a 3500K luminaire using one driver. Please consult factory for custom lumen outputs & wattage.

**ORDERING**

1	2	3	4	5	6	7	8	9	10	11
---	---	---	---	---	---	---	---	---	----	----

<p><b>1 - FIXTURE ID</b></p> <p>LS4-LED RG</p>	<p><b>2 - LENGTH</b></p> <p>2 - 2 ft 4 - 4 ft 8 - 8 ft x'-x" - Custom (specify length)</p> <p>**Patterns available, consult factory</p>	<p><b>3 - COLOR TEMP</b></p> <p>27 - 2700K/90 CRI 30 - 3000K/90 CRI 35 - 3500K/90 CRI 40 - 4000K/90 CRI 50 - 5000K/90 CRI TW* - Tunable White RGBW* - RGB + 3000K</p> <p>*Must use DMX Driver (Remote)</p>	<p><b>4 - LED SYSTEM</b></p> <p>LTG1 - Standard LTG2 - Low LTG3 - High C - Custom Output (ie-C550Lm/ft)</p>	<p><b>5 - VOLTAGE</b></p> <p>UNV - Universal (120/277V)</p>	<p><b>6 - DRIVER</b></p> <p>DB - Standard 10% Dimming (0-10V) DB1% - 1% Dimming (0-10V) DB.01% - .01% Dimming (0-10V) LTEA* - Lutron 2-wire 1% Dimming L3DA* - Lutron 3-wire 1% Dimming LDE1* - Lutron Digital EcoSystem LDE5* - 5 Series EcoSystem; 5% Dimming *Refer to 'Electrical' Information Above DMX - For Color Tuning and RGBW</p>
<p><b>7 - FINISH</b></p> <p>W - White (Standard) BLK - Black CC - Custom Color (provide RAL#)</p>	<p><b>8 - MOUNTING</b></p> <p>AC - Air Craft Cable (50") SM - Surface Mount WM - Wall Mount</p>	<p><b>9 - CONTROL</b></p> <p>EIS - Integral Sensor by Enlighted WIS - Integral Sensor by Wattstopper</p>	<p><b>10 - OPTICS</b></p> <p>SD - Standard Diffuser</p>	<p><b>11 - OPTIONS</b></p> <p>EM 120V - Emergency Pack EM 277V - Emergency Pack</p>	

DATE

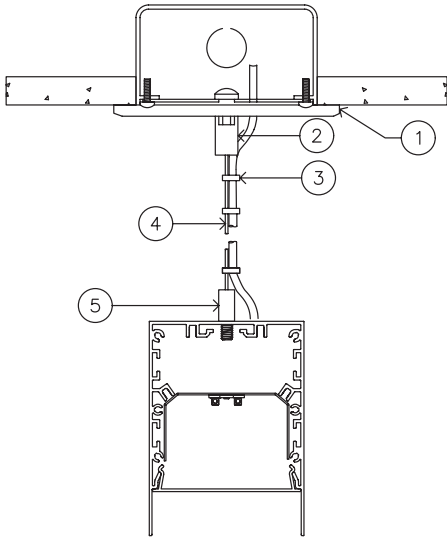
PROJECT

FIRM

TYPE

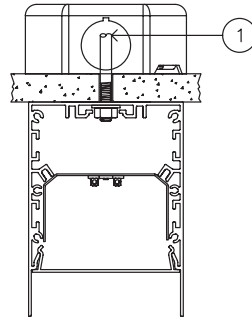
## MOUNTING OPTIONS

AC - Air Craft Cable (50")



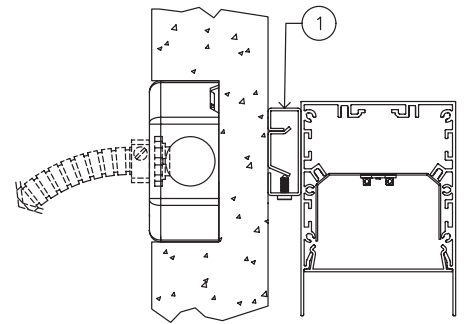
- 1 - 5" Round Canopy (Standard White Finish)
- 2 - Canopy Retainer
- 3 - SJT Cord (Standard White)
- 4 - Air Craft Cable
- 5 - Gripper

SM - Surface Mount



- 1 - Threaded Rod (not supplied)

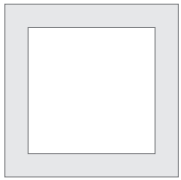
WM - Wall Mount



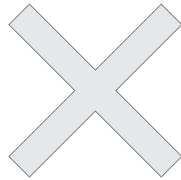
- 1 - 0.75" Wall Mount Bracket

## CORNERS & PATTERNS

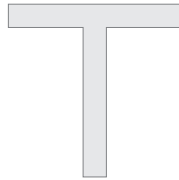
Available with illuminated corners, angles, and custom patterns. **Must consult factory for custom corners and patterns.**



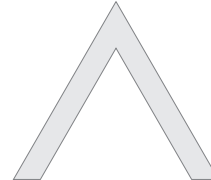
Square Patterns



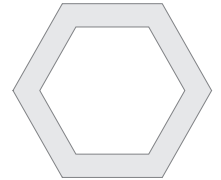
X Patterns



T Patterns

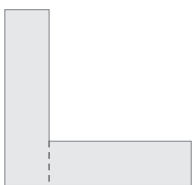


Custom Angles

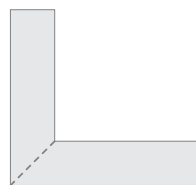


Custom Patterns

## LENS CUT OPTIONS



Straight-cut



Mitered Angle

NOTE: Straight-Cut is standard configuration, Mitered Angle is optional and must be specified.

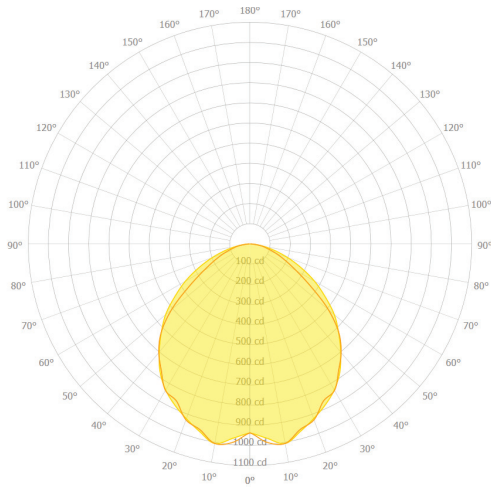
DATE

PROJECT

FIRM

TYPE

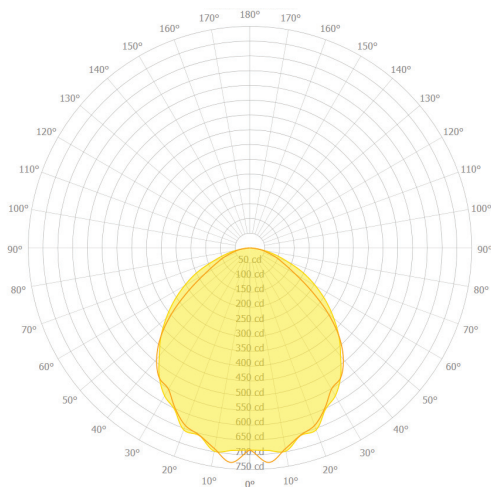
## PHOTOMETRICS



**LS4 LED RG 4FT LTG1 3500K**  
 DELIVERED LUMENS: 2,497Lm  
 TOTAL WATTS: 29W  
 EFFICACY: 86 Lumens/Watt

### ZONAL LUMEN SUMMARY

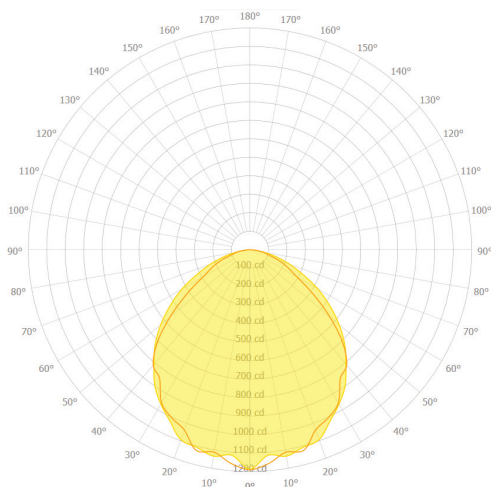
ZONE	LUMENS	% LAMP	% FIXTURE
0.00 - 30.00	771.71	20.32	30.90
0.00 - 40.00	1246.03	32.80	49.90
0.00 - 60.00	2110.13	55.55	84.50
0.00 - 90.00	2497.30	65.74	100.00
90.00 - 120.00	0.56	0.01	0.02
90.00 - 150.00	0.56	0.01	0.02
90.00 - 180.00	0.56	0.01	0.02
0.00 - 180.00	2497.30	65.74	100.00



**LS4 LED RG 4FT LTG2 3500K**  
 DELIVERED LUMENS: 1,715Lm  
 TOTAL WATTS: 20W  
 EFFICACY: 86 Lumens/Watt

### ZONAL LUMEN SUMMARY

ZONE	LUMENS	% LAMP	% FIXTURE
0.00 - 30.00	531.68	20.36	30.99
0.00 - 40.00	858.12	32.85	50.02
0.00 - 60.00	1449.93	55.51	84.51
0.00 - 90.00	1715.71	65.69	100.00
90.00 - 120.00	0.36	0.01	0.02
90.00 - 150.00	0.36	0.01	0.02
90.00 - 180.00	0.36	0.01	0.02
0.00 - 180.00	1715.71	65.69	100.00



**LS4 LED RG 4FT LTG3 3500K**  
 DELIVERED LUMENS: 2,861Lm  
 TOTAL WATTS: 35W  
 EFFICACY: 81 Lumens/Watt

### ZONAL LUMEN SUMMARY

ZONE	LUMENS	% LAMP	% FIXTURE
0.00 - 30.00	885.74	20.35	30.95
0.00 - 40.00	1430.00	32.85	49.97
0.00 - 60.00	2418.21	55.55	84.50
0.00 - 90.00	2861.74	65.74	100.00
90.00 - 120.00	0.64	0.01	0.02
90.00 - 150.00	0.64	0.01	0.02
90.00 - 180.00	0.64	0.01	0.02
0.00 - 180.00	2861.74	65.74	100.00