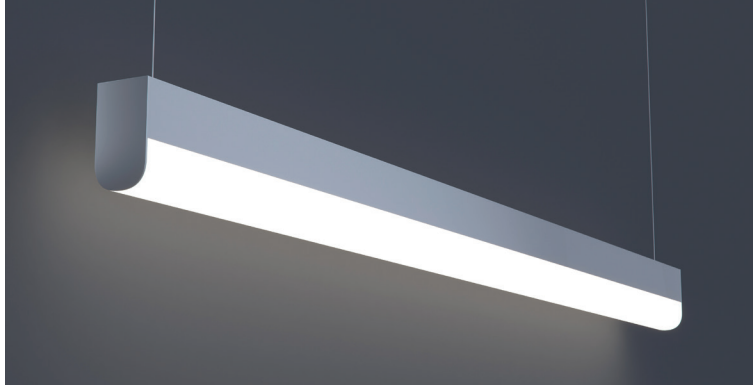




DATE	PROJECT	FIRM	TYPE
------	---------	------	------



Narrow, linear luminaire with round lens. For use in indoor applications where an LED luminaire with small profile providing continuous light is required. Suspended, surface or wall mount installation.

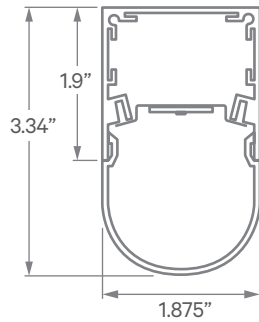
### FEATURES

- Available In Custom Lengths & Long Runs To 1/16" Accuracy
- Rounded Diffuser
- Damp Location Rated
- CRI 90+ Standard
- 5 Year, 50,000 Hour Fixture Warranty
- 2700K, 3000K, 3500K, 4000K & 5000K Color Temperatures Available
- Enlighted/Wattstopper Sensors Available

<b>APPLICATIONS</b>	Offices, Lobbies, Retail Stores, Classrooms, Reception Areas & Corridors			
<b>CONSTRUCTION</b>	Extruded Aluminum Housing, Steel End Caps, Formed Steel Gear Tray	<b>OPTICS</b>	Rounded, Extruded High Transmission Satin Acrylic Lens With No LED Imaging	
<b>WARRANTY</b>	5 Year Limited Warranty (Covers Standard Components)		<b>FINISH</b>	Standard Powder-Coated White. Custom RAL Colors Available
<b>FIXTURE RATINGS &amp; CERTIFICATIONS</b>	Union Made ETL Listed	Made In The USA Damp Location Rated	 	

<b>ELECTRICAL</b>	Integral Driver With 0-10V 10% Dimming Standard. Several Driver Options Available. See Below For Lutron Dimming Information		
	2-Wire Forward Phase; Hi-Lume 1% Dimming, Only Available For 120V		LTEA
	3-Wire EcoSystem; Hi-lume 1% Dimming		L3DA
	Digital EcoSystem; Hi-lume 1% Dimming, 'Soft-on Fade-to-black' (Required for Daylighting)		LDE1
	5 Series EcoSystem; 5% Dimming		LDE5

### EXTRUSION DIMENSIONS



### LED SYSTEM INFORMATION

	Nominal System Watts	Nominal Delivered Lumens	Nominal Efficacy
Standard (LTG1)	7.25 W/ft	667 Lm/ft	92 Lm/W
Low (LTG2)	5 W/ft	470 Lm/ft	94 Lm/W
High (LTG3)	8.75 W/ft	790 Lm/ft	87 Lm/W

Based on a 3500K luminaire using one driver. Please consult factory for custom lumen outputs & wattage.

<b>ORDERING</b>	1	2	3	4	5	6	7	8	9	10	11
-----------------	---	---	---	---	---	---	---	---	---	----	----

<b>1 - FIXTURE ID</b> LS1 LED RD	<b>2 - LENGTH</b> 2 - 2 ft 4 - 4 ft 8 - 8 ft x'-x" - Custom (specify length)	<b>3 - COLOR TEMP</b> 27 - 2700K/90 CRI 30 - 3000K/90 CRI 35 - 3500K/90 CRI 40 - 4000K/90 CRI 50 - 5000K/90 CRI TW* - Tunable White RGBW* - RGB + 3000K  *Must use DMX Driver (Remote)	<b>4 - LED SYSTEM</b> LTG1 - Standard LTG2 - Low LTG3 - High C - Custom Output (ie-C550Lm/ft)	<b>5 - VOLTAGE</b> UNV - Universal (120/277V)	<b>6 - DRIVER</b> DB - Standard 10% Dimming (0-10V) DB1% - 1% Dimming (0-10V) DB.01% - .01% Dimming (0-10V) LTEA* - Lutron 2-wire 1% Dimming L3DA* - Lutron 3-wire 1% Dimming LDE1* - Lutron Digital EcoSystem LDE5* - 5 Series EcoSystem; 5% Dimming *Refer to 'Electrical' Information Above DMX - For Color Tuning and RGBW
<b>7 - FINISH</b> W - White (Standard) BLK - Black CC - Custom Color (provide RAL#)	<b>8 - MOUNTING</b> AC - Air Craft Cable (50") SM - Surface Mount WM - Wall Mount	<b>9 - CONTROL</b> EIS - Integral Sensor by Enlighted WIS - Integral Sensor by Wattstopper	<b>10 - OPTICS</b> SD - Standard Diffuser	<b>11 - OPTIONS</b> EM 120V - Emergency Pack EM 277V - Emergency Pack	

DATE

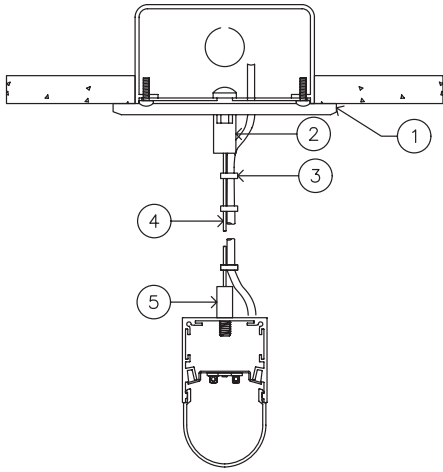
PROJECT

FIRM

TYPE

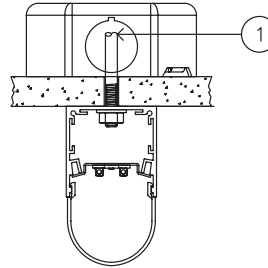
## MOUNTING OPTIONS

AC - Air Craft Cable (50")



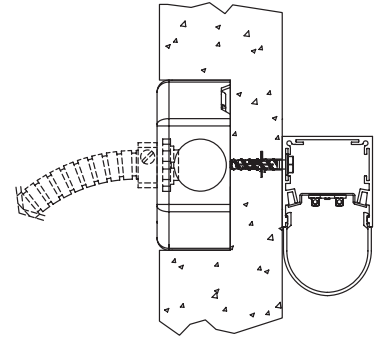
- 1 - 5" Round Canopy (Standard White Finish)
- 2 - Canopy Retainer
- 3 - SJT Cord (Standard White)
- 4 - Air Craft Cable
- 5 - Gripper

SM - Surface Mount



- 1 - Threaded Rod (not supplied)

WM - Wall Mount



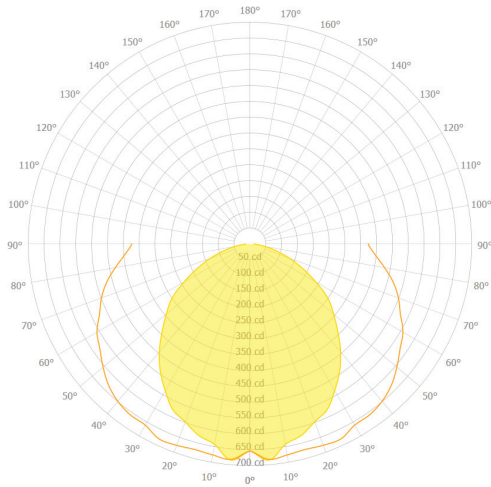
DATE

PROJECT

FIRM

TYPE

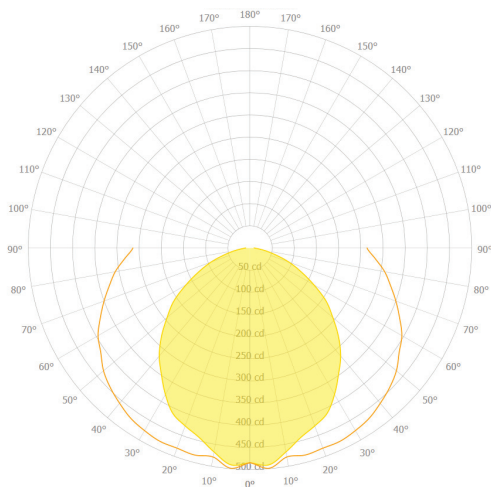
## PHOTOMETRICS



**LS1 LED RD 4FT LTG1 3500K**  
 DELIVERED LUMENS: 2,668Lm  
 TOTAL WATTS: 29W  
 EFFICACY: 92 Lumens/Watt

### ZONAL LUMEN SUMMARY

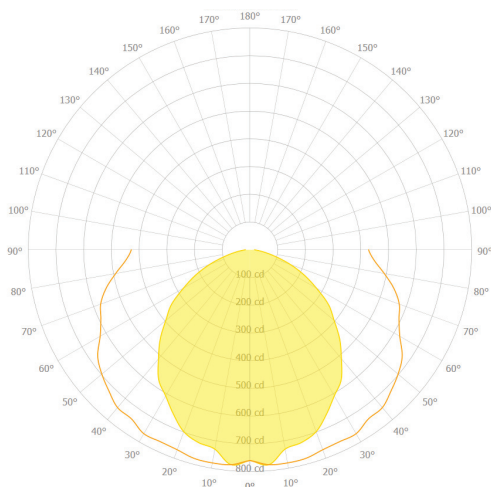
ZONE	LUMENS	% LAMP	% FIXTURE
0.00 - 30.00	838.12	22.06	30.66
0.00 - 40.00	1346.95	35.46	49.27
0.00 - 60.00	2281.95	60.07	83.48
0.00 - 90.00	2733.54	71.96	100.00
90.00 - 120.00	0.08	0.00	0.00
90.00 - 150.00	0.08	0.00	0.00
90.00 - 180.00	0.08	0.00	0.00
0.00 - 180.00	2733.54	71.96	100.00



**LS1 LED RD 4FT LTG2 3500K**  
 DELIVERED LUMENS: 1,891Lm  
 TOTAL WATTS: 20W  
 EFFICACY: 94 Lumens/Watt

### ZONAL LUMEN SUMMARY

ZONE	LUMENS	% LAMP	% FIXTURE
0.00 - 30.00	383.51	14.24	20.28
0.00 - 40.00	641.46	23.82	33.92
0.00 - 60.00	1212.26	45.02	64.10
0.00 - 90.00	1891.27	70.23	100.00
90.00 - 120.00	42.68	1.58	2.26
90.00 - 150.00	42.68	1.58	2.26
90.00 - 180.00	42.68	1.58	2.26
0.00 - 180.00	1891.27	70.23	100.00



**LS1 LED RD 4FT LTG3 3500K**  
 DELIVERED LUMENS: 3,056Lm  
 TOTAL WATTS: 35W  
 EFFICACY: 87 Lumens/Watt

### ZONAL LUMEN SUMMARY

ZONE	LUMENS	% LAMP	% FIXTURE
0.00 - 30.00	616.81	14.17	20.18
0.00 - 40.00	1032.89	23.73	33.79
0.00 - 60.00	1957.39	44.96	64.03
0.00 - 90.00	3056.87	70.22	100.00
90.00 - 120.00	68.74	1.58	2.25
90.00 - 150.00	68.74	1.58	2.25
90.00 - 180.00	68.74	1.58	2.25
0.00 - 180.00	3056.87	70.22	100.00