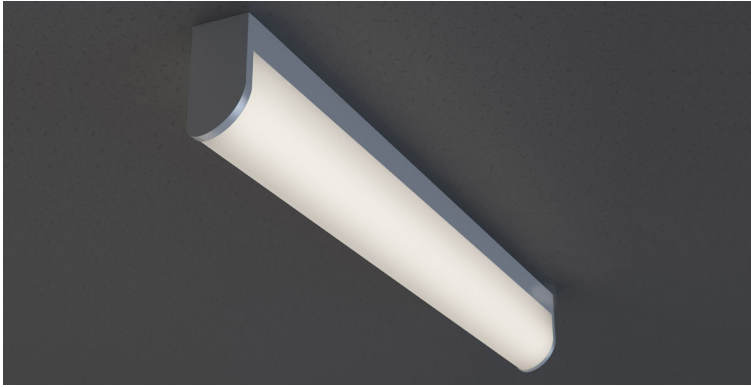





DATE _____ PROJECT _____ FIRM _____ TYPE _____



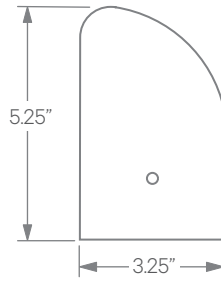
Specification grade, surface mounted wall luminaire with ribbed white acrylic diffuser. For use in indoor applications where an LED luminaire with a diffuser for low-glare illumination is required.

FEATURES

- Damp Location Rated
- CRI 90+ Standard; R9>50
- 5 Year, 50,000 Hour Fixture Warranty
- 3000K, 3500K, 4000K & 5000K Color Temperatures Available
- Available with PoE

APPLICATIONS	Stairwells, Corridors, Bathrooms, Utility Rooms		
CONSTRUCTION	Heavy Gauge Steel Housing	OPTICS	Ribbed, White Acrylic Diffuser
WARRANTY	5 Year Limited Warranty (Covers Standard Components)		FINISH Standard Powder-Coated White or Bright Anodized Aluminum Finish. Custom RAL Colors Available
FIXTURE RATINGS & CERTIFICATIONS	Union Made ETL Listed	Made In The USA Damp Location Rated	  DRIVERS & SENSORS 
ELECTRICAL	Integral Driver with 0-10V Dimming Standard. Several Driver Options Available		For Wiring Diagrams and Sensor Information Click Here

EXTRUSION DIMENSIONS



LED SYSTEM INFORMATION

	Nominal System Watts	Nominal Delivered Lumens	Nominal Efficacy
Standard (LTG1)	7.25 W/ft	638 lm/ft	88 LPW
Low (LTG2)	5 W/ft	450 lm/ft	90 LPW
High (LTG3)	10 W/ft	851 lm/ft	85 LPW

Based on a 3500K luminaire using one driver. Custom outputs available; specify below.

ORDERING



1 - FIXTURE ID FP2 LED	2 - LENGTH 2 - 2 ft 3 - 3 ft 4 - 4 ft	3 - COLOR TEMP 30 - 3000K/90 CRI 35 - 3500K/90 CRI 40 - 4000K/90 CRI 50 - 5000K/90 CRI TW* - Tunable White RGBW** - RGB+3000K <small>*Must use DMX or TW10 Driver **Must use DMX Driver</small>	4 - LED SYSTEM LTG1 - Standard LTG2 - Low LTG3 - High LTGC - Custom Output	5 - VOLTAGE UNV - Universal (120/277V)	6 - DRIVER DB - Standard Dimming (0-10V) DB1% - 1% Dimming (0-10V) DB.1% - 0.1% Dimming (0-10V) LTEA - Lutron 2-wire 1% Dimming (120V only) LDE1 - Lutron Digital EcoSystem LDE5 - 5 Series EcoSystem; 5% Dimming PoE - Power over Ethernet. Consult Factory for Compatibility DMX - For Color Tuning and RGBW (Remote) TW10 - Dual Channel, 0-10V For Color Tuning (CCT and Intensity Control)
7 - FINISH W - White (Standard) AA - Anodized Aluminum Finish CC - Custom Color (provide RAL#)	8 - MOUNTING SM - Surface Mount WM - Wall Mount	9 - OTHER OPTIONS EM 120V - Emergency Pack EM 277V - Emergency Pack EMCKT - Emergency Circuit CEC - Chrome Ends			