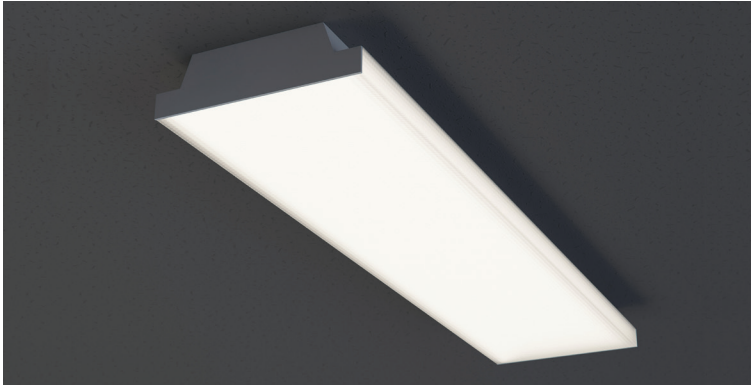


DATE _____ PROJECT _____ FIRM _____ TYPE _____



Specification grade, surface mounted luminaire with milk white lens. For use in indoor applications where an LED luminaire with maximum efficiency is required.

FEATURES

- Continuous Row Mounting
- Damp Location Rated
- CRI 90+ Standard; R9>50
- 5 Year, 50,000 Hour Fixture Warranty
- 3000K, 3500K, 4000K & 5000K Color Temperatures Available
- Available with PoE

APPLICATIONS Schools, Retail Stores, Office Areas, Corridors, Bathrooms, Utility Areas

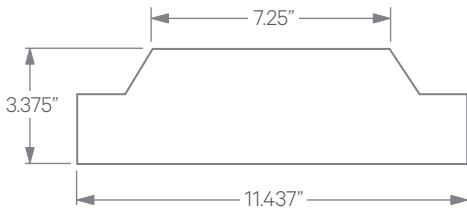
CONSTRUCTION Precision-Formed Steel Housing | **OPTICS** Milk White Lens

WARRANTY 5 Year Limited Warranty (Covers Standard Components) | **FINISH** Standard Powder-Coated White. Custom RAL Colors Available

FIXTURE RATINGS & CERTIFICATIONS Union Made ETL Listed | Made In The USA Damp Location Rated |   | **DRIVERS & SENSORS** 

ELECTRICAL Integral Driver with 0-10V Dimming Standard. Several Driver Options Available | For Wiring Diagrams and Sensor Information Click [Here](#)

EXTRUSION DIMENSIONS



LED SYSTEM INFORMATION

	Nominal System Watts	Nominal Delivered Lumens	Nominal Efficacy
Standard (LTG1)	7.25 W/ft	700 lm/ft	89 LPW
Low (LTG2)	5 W/ft	450 lm/ft	90 LPW
High (LTG3)	10 W/ft	895 lm/ft	87 LPW

Based on a 3500K luminaire using one driver. Custom outputs available; specify below.

ORDERING

1	2	3	4	5	6	7	8	9	10
1 - FIXTURE ID A SERIES LED	2 - LENGTH 4 - 4 ft 8 - 8 ft	3 - COLOR TEMP 30 - 3000K/90 CRI 35 - 3500K/90 CRI 40 - 4000K/90 CRI 50 - 5000K/90 CRI TW* - Tunable White RGBW** - RGB+3000K <small>*Must use DMX or TW10 Driver **Must use DMX Driver</small>	4 - LED SYSTEM LTG1 - Standard LTG2 - Low LTG3 - High LTGC - Custom Output	5 - VOLTAGE UNV - Universal (120/277V)	6 - DRIVER DB - Standard Dimming (0-10V) DB1% - 1% Dimming (0-10V) DB.1% - 0.1% Dimming (0-10V) LTEA - Lutron 2-wire 1% Dimming (120V only) LDE1 - Lutron Digital EcoSystem LDE5 - 5 Series EcoSystem; 5% Dimming PoE - Power over Ethernet. Consult Factory for Compatibility DMX - For Color Tuning and RGBW (Remote) TW10 - Dual Channel, 0-10V For Color Tuning (CCT and Intensity Control)	7 - FINISH W - White (Standard) CC - Custom Color (provide RAL#)	8 - MOUNTING SM - Surface Mount PS - Pendant Stem (6", 12", 24", 36", 48")	9 - CIRCUIT (Optional) EM 120V - Emergency Pack EM 277V - Emergency Pack	10 - OTHER OPTIONS WH6 - 6ft Whips Preinstalled